

67 Bondway London

Set within the exclusive DAMAC Tower, this exquisite two bedroom apartment offers luxury design and high specification finish.

This spectacular development featuring Versace design, offers its residents impressive views, communal gardens, an indoor swimming pool and jacuzzi, a state-of-the-art gymnasium, and a children's play area.

Additional facilities include a 24-hour concierge service, a residents' lounge overlooking a roof garden and private cinema.

Council Tax Band: Lambeth - F

£1,460 Per Week

67 Bondway London



2



2



1

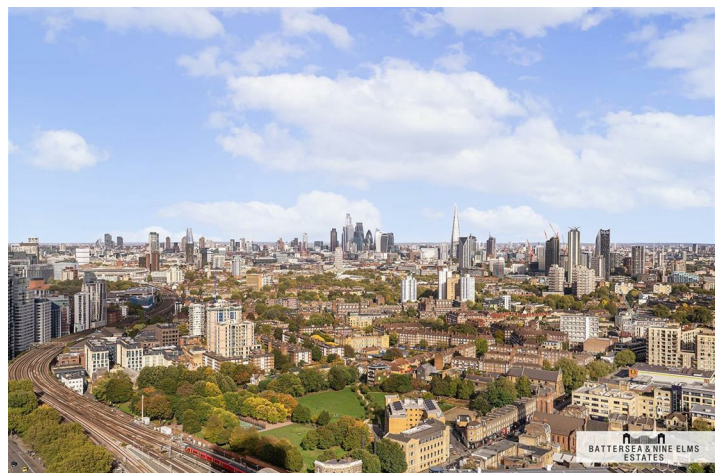
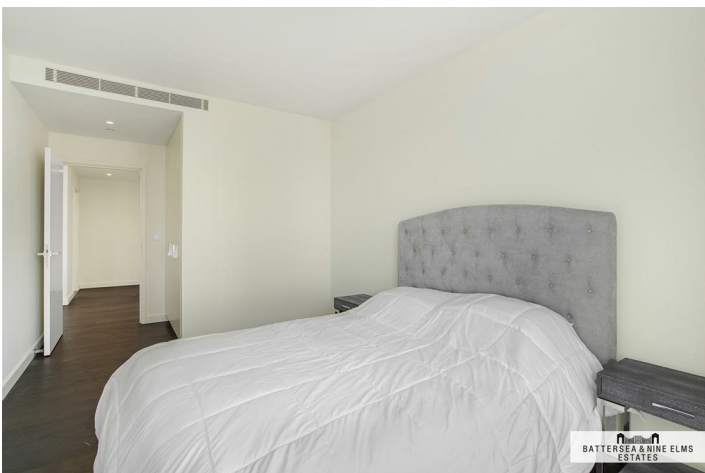
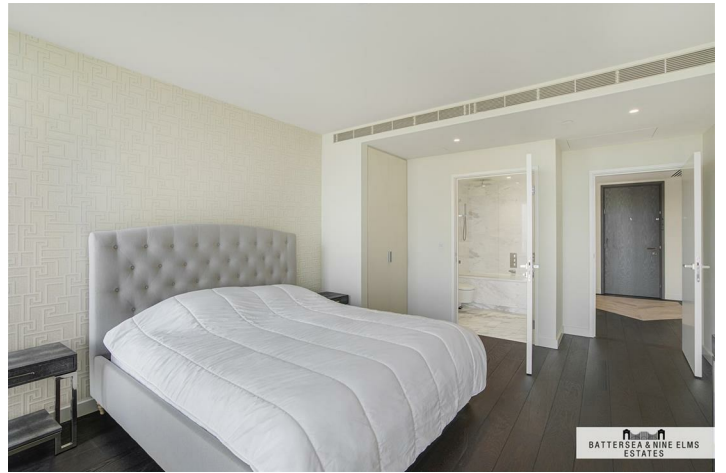
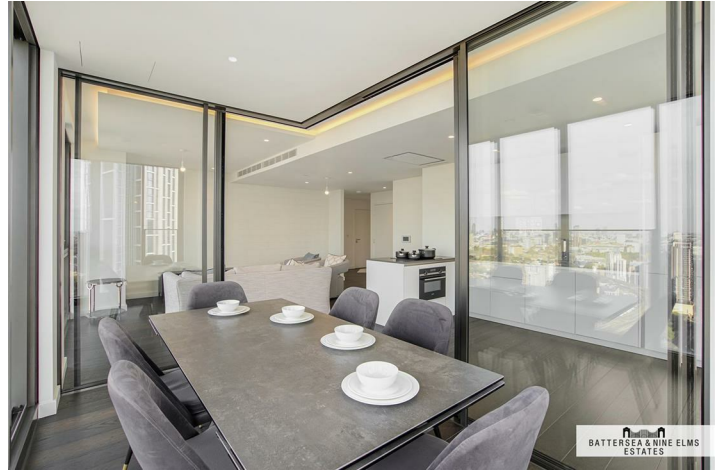
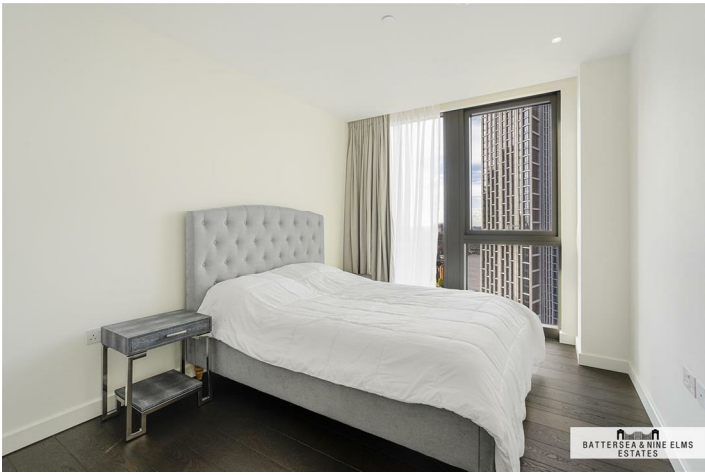


B

- Two double bedrooms
- 24 Hour concierge
- Comfort cooling
- Zone 1 transport links
- Outstanding resident facilities
- Iconic development



[Directions](#)



Damac Tower,
Bondway, SW8

Approximate Gross Internal Area
93.49 sq m / 1,006 sq ft
Winter Garden
9.16 sq m / 99 sq ft



Total Areas Shown On Plan
102.65 sq m / 1,105 sq ft

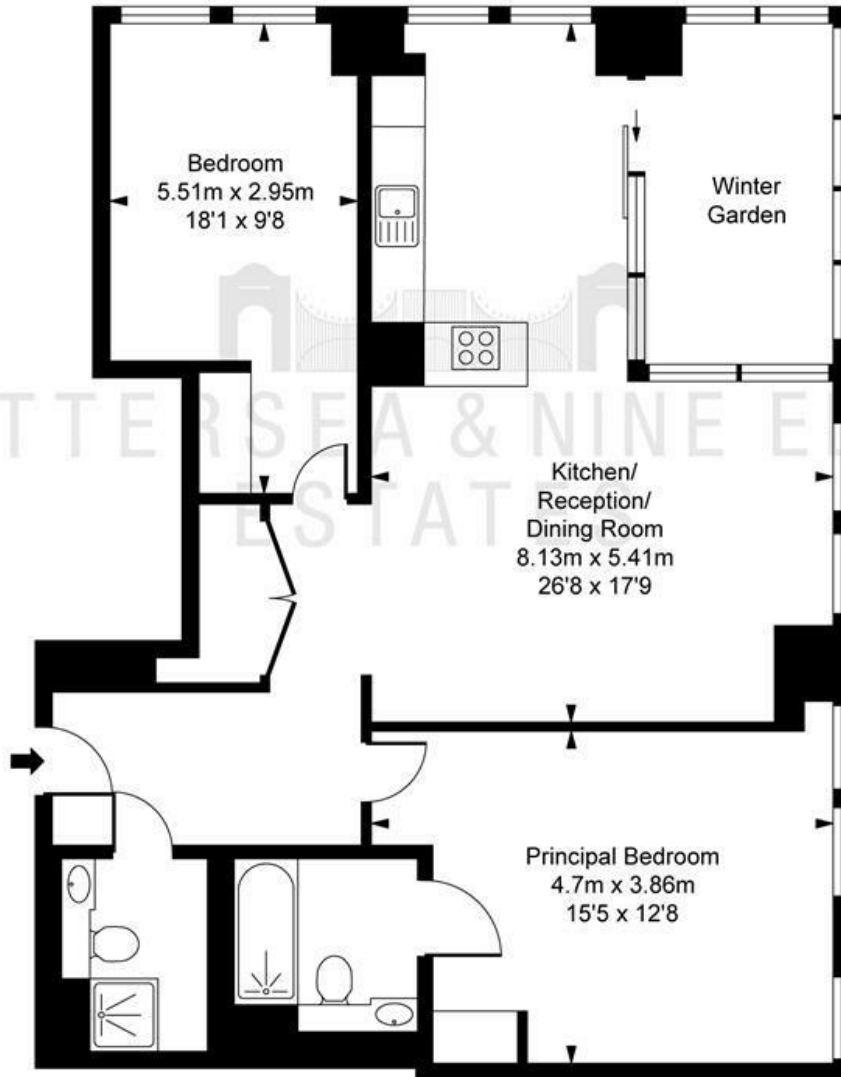


ILLUSTRATION FOR IDENTIFICATION PURPOSES ONLY
ALL MEASUREMENTS AND AREA FIGURES SUPPLIED BY OTHERS, ACCURACY IS NOT GUARANTEED.
THIS PLAN MUST NOT BE REPRODUCED BY ANY OTHER PERSON WITHOUT PERMISSION

These particulars, whilst believed to be accurate are set out as a general outline only for guidance and do not constitute any part of an offer or contract. Intending purchasers should not rely on them as statements of representation of fact, but must satisfy themselves by inspection or otherwise as to their accuracy. No person in this firm's employment has the authority to make or give any representation or warranty in respect of the property.

