



67 Bondway London

Eagerly anticipated this spectacular development featuring Versace design, offers its residents impressive views, communal gardens, an indoor swimming pool and jacuzzi, a state-of-the-art gymnasium, and a children's play area.

Additional facilities include a 24-hour concierge service, a residents' lounge overlooking a roof garden and private cinema.

Council Tax Band: Lambeth F

Minimum contract: 12 months

Change of contract fee: £50 including VAT

Lift access | Cladding: EWS1 Certificate available

Holding Deposit - £1100 (1 weeks rent, subject to agreed offer)

£1,100 Per Week

Electricity supply – Mains | Cold Water supply – Mains | Sewerage – Mains | Hot water, heating & comfort cooling – Mains | Internet: Fibre | Parking No | Lift Access

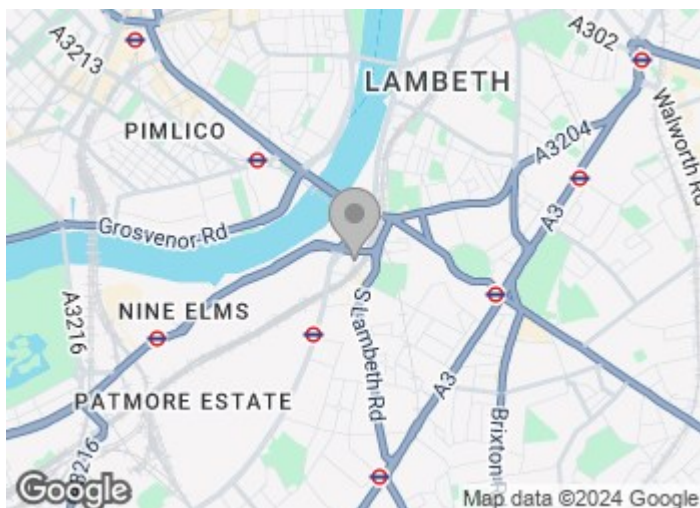
To check broadband and mobile phone coverage please visit Ofcom.

To check planning permission please visit Lambeth Council Website, Planning & Building Control

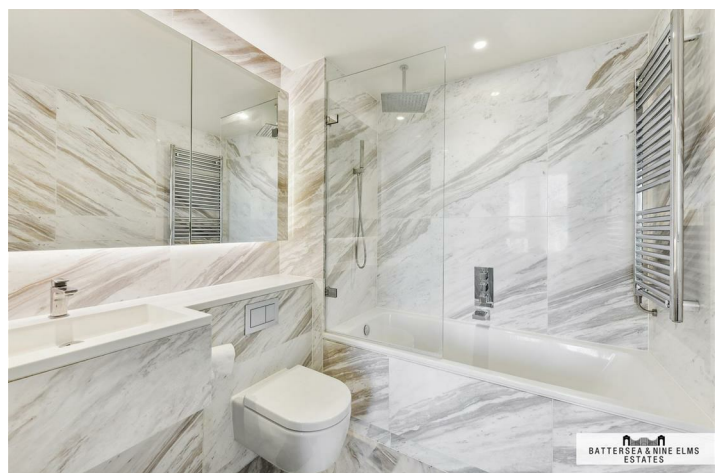
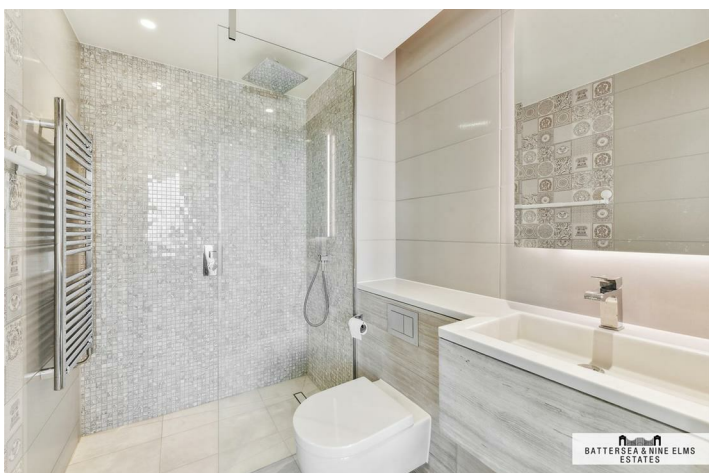
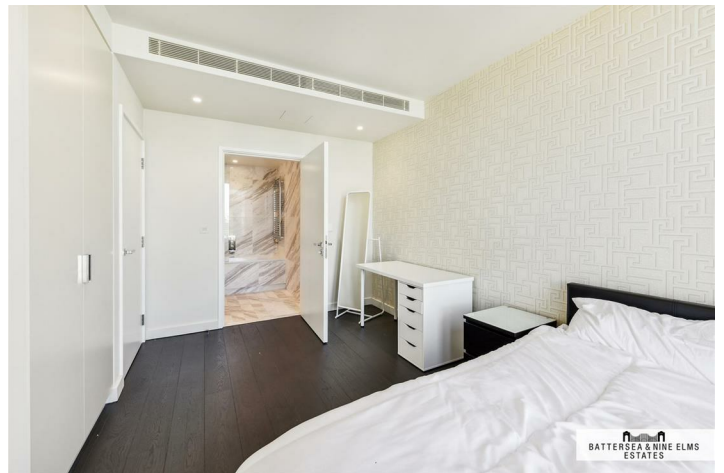
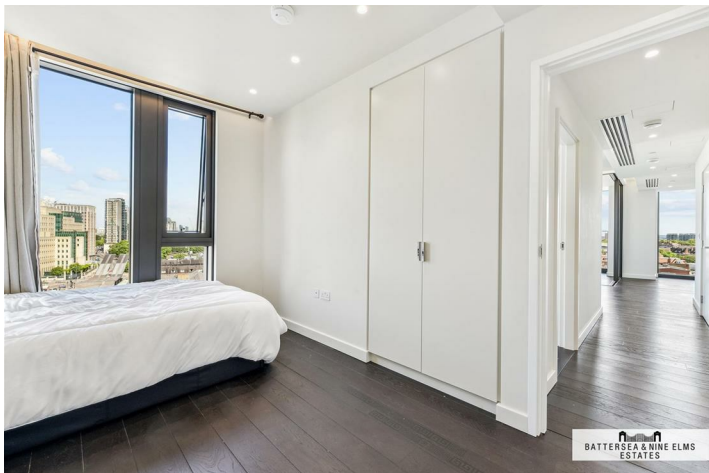
67 Bondway London



- Two double bedrooms
- Two bathrooms (one en suite)
- Comfort cooling
- Dishwasher
- 24 Hour concierge
- Outstanding resident facilities



[Directions](#)



Floor Plan

These particulars, whilst believed to be accurate are set out as a general outline only for guidance and do not constitute any part of an offer or contract. Intending purchasers should not rely on them as statements of representation of fact, but must satisfy themselves by inspection or otherwise as to their accuracy. No person in this firm's employment has the authority to make or give any representation or warranty in respect of the property.

