



## 28 Circus Road West London

An impressive two bedroom apartment available in the sought after development, Battersea Power Station. This beautiful property boasts 896 sq ft of luxurious accommodation. Comprising of two double bedrooms, two bathrooms, an open plan kitchen/reception room and winter garden, this apartment offers wealth of light and space.

The Battersea Power Station development offers vibrant shops, restaurants and leisure spaces all on the doorstep of its residents. Bessborough House is located in the West phase of the complex ideally situated for the River Thames, Chelsea, Sloan Square, Battersea Park and local tube and rail stations.

Council Tax Band: Wandsworth - F  
Minimum contract: 12 months  
Change of contract fee: £50 including VAT  
Lift access | Cladding: EWS1 Certificate available  
Holding Deposit - £985 (1 weeks rent, subject to agreed offer)

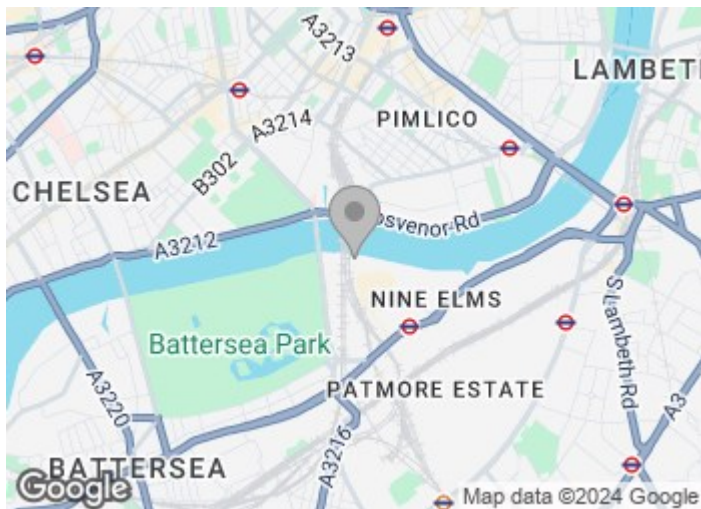
Electricity supply – Mains | Cold Water supply – Mains | Sewerage – Mains | Hot water, heating & comfort cooling – Mains | Internet: Fibre | Parking No | Lift Access

**£985 Per Week** and mobile phone coverage please visit Ofcom.

## 28 Circus Road West London

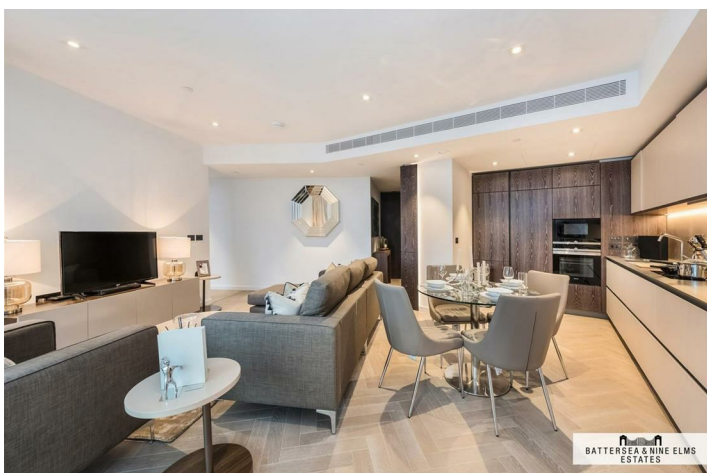
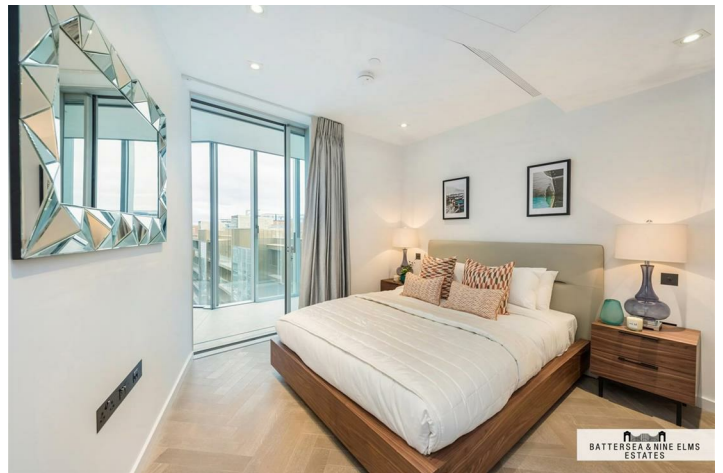
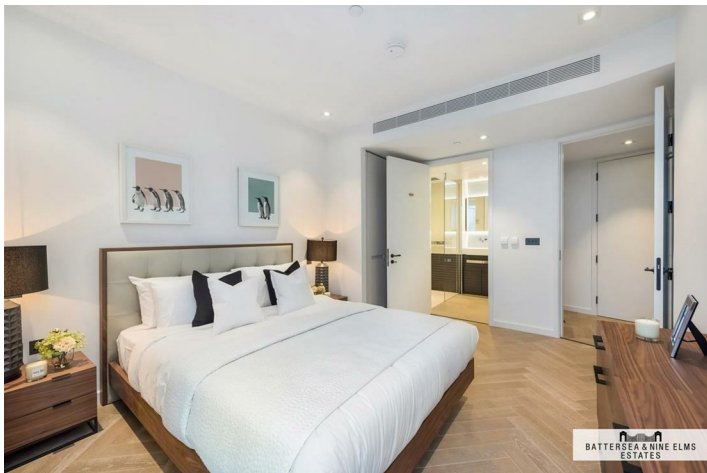
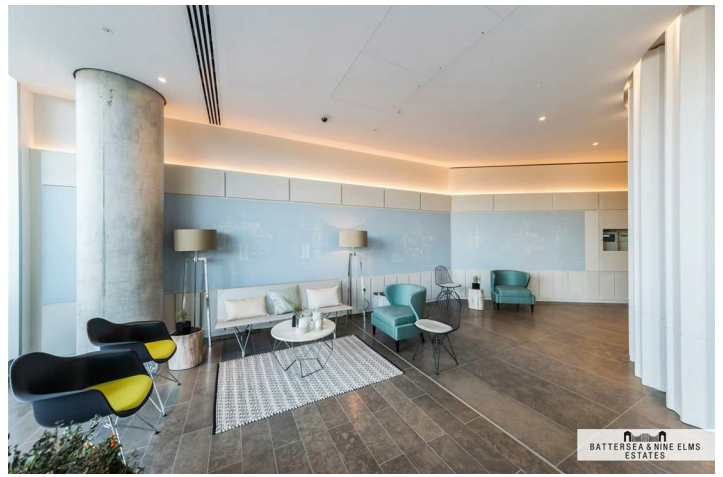


- Two double bedrooms
- Two bathrooms (one en suite)
- Residents Lounge & bar
- Gym & Swimming pool
- Iconic riverside development

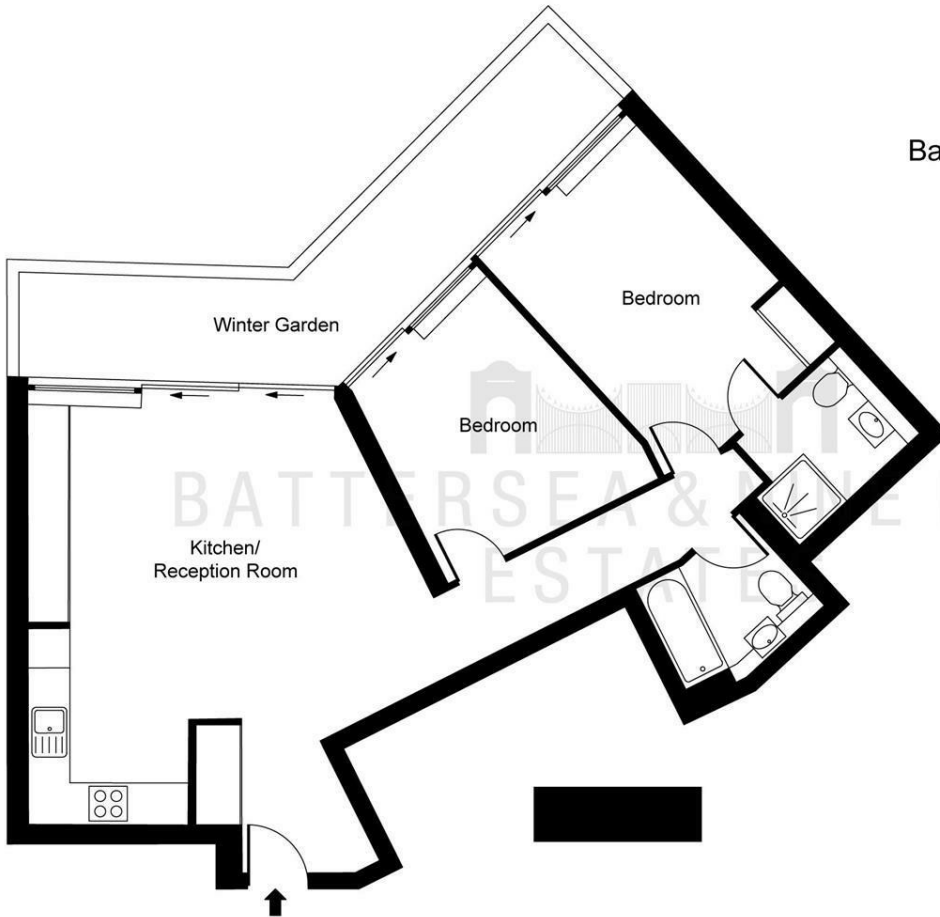


[Directions](#)

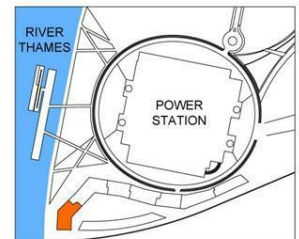




# Floor Plan



**Bessborough House,  
Battersea Power Station, SW8**  
Approximate Gross Internal Area  
83.30 sq m / 897 sq ft  
Winter Garden  
16.40 sq m / 177 sq ft



This plan is not to scale. It is for guidance and not for valuation purposes.  
All measurements and areas are approximate only, and have been prepared in accordance with the current edition of the RICS Code of Measuring Practice.  
© Fulham Performance

These particulars, whilst believed to be accurate are set out as a general outline only for guidance and do not constitute any part of an offer or contract. Intending purchasers should not rely on them as statements of representation of fact, but must satisfy themselves by inspection or otherwise as to their accuracy. No person in this firm's employment has the authority to make or give any representation or warranty in respect of the property.

