



Riverlight Quay London

Featuring truly breathtaking uninterrupted views of the London skyline, its legendary landmarks and the River Thames, this stunning two bedroom, two bathroom apartment is arranged over a high floor of the exclusive Riverlight development. The apartment boasts over 1000 Sq ft internal living space and two balconies.

Residents have access to an impressive array of facilities such as a residents gym, swimming pool and spa, in addition to a 24 hour concierge service, residents cinema and golf simulator. Secure underground parking is also included.

Stunning design, beautiful views, central location and world-class facilities: Riverlight has all the ingredients of the perfect London development. Set at the heart of the cluster of developments on the waterfront, the architects behind Riverlight have planned an oasis of landscaped communal gardens and open space within this development. Together with excellent transport links from Vauxhall, Battersea Power Station and Nine Elms Tube station; Riverlight presents an opportunity to make the most of what London has to offer.

Approximately 987 years remaining on lease

Ground rent amount: Ask Agent

Ground rent review period: Ask agent

Service charge amount: approx. Ask Agent

Service charge review period: N/A

Council tax band: Wandsworth - G

Asking Price £1,800,000

Electricity supply – Mains | Heating & Cooling – Mains | Water supply – Mains | Sewerage – Mains | Internet: Fibre | Lift Access | Cladding: EWS1 Certificate available

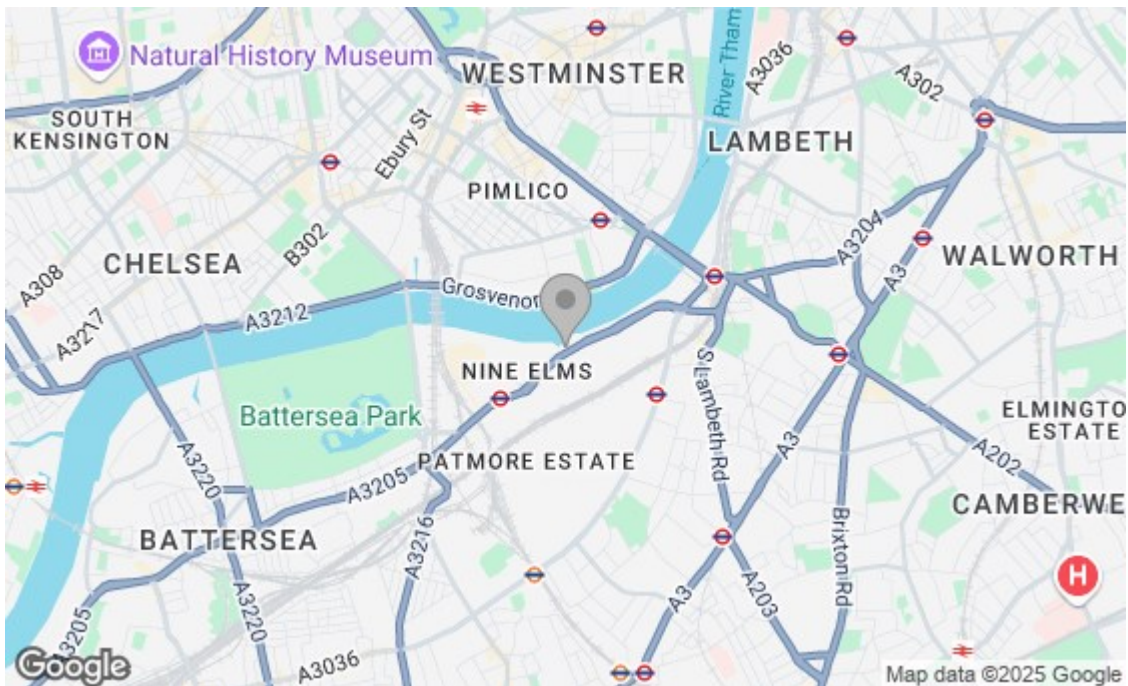
To check broadband and mobile phone coverage please visit Ofcom

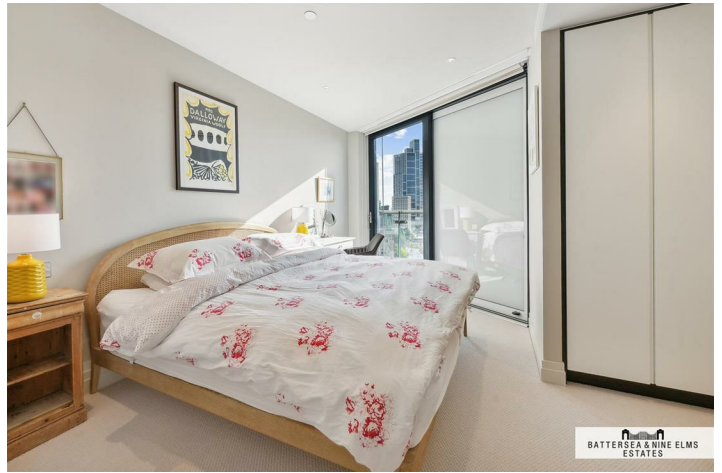
To check planning permission please visit Wandsworth Council Website, Planning & Building Control

Riverlight Quay London

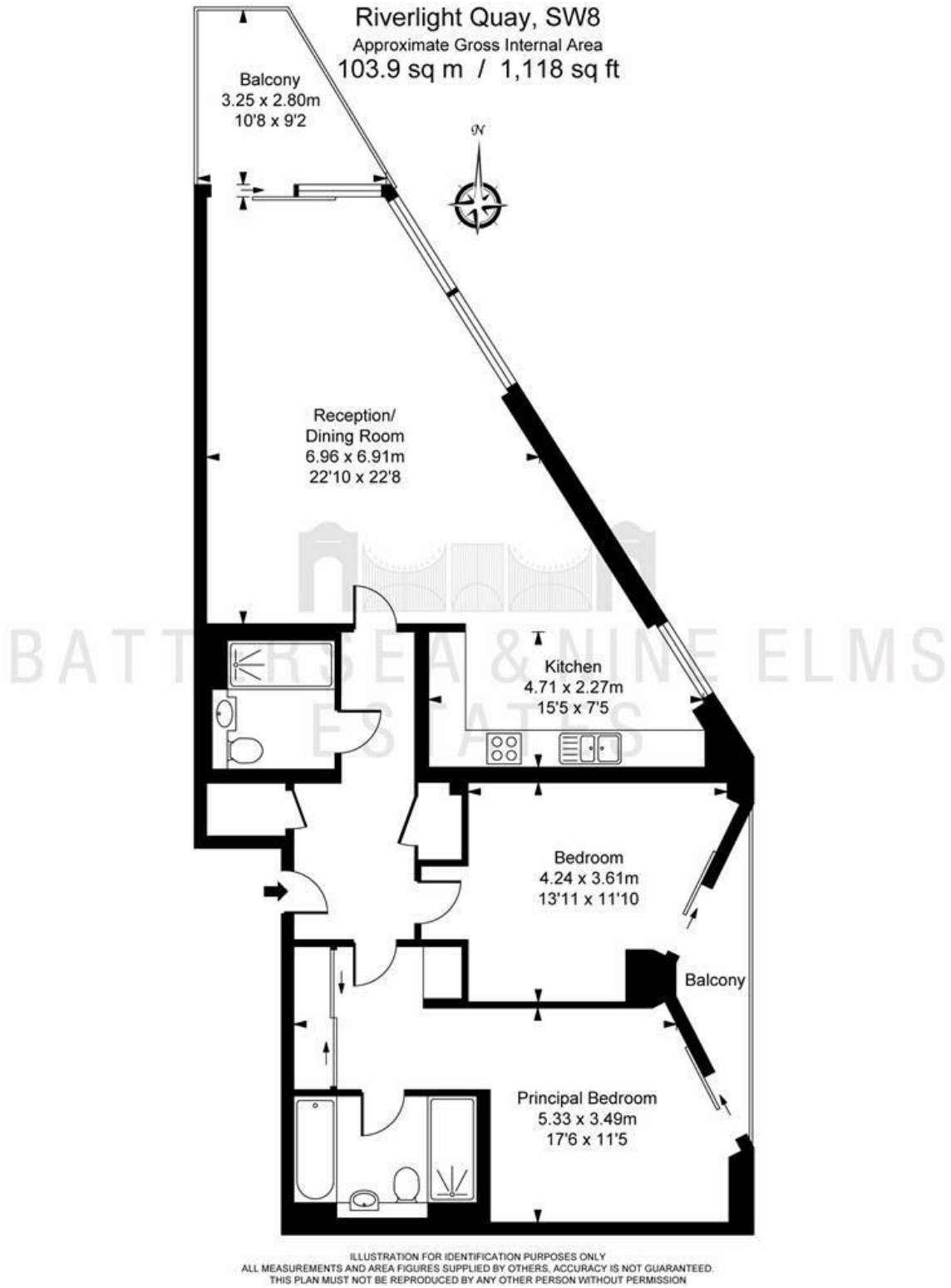


- Two double bedrooms
- Siemens kitchen appliances
- Golf simulator & residents cinema
- Secure underground parking
- Two bathrooms (one en suite)
- 24 Hour concierge
- Zone 1 transport links
- Comfort cooling
- Residents gym, spa and swimming pool
- Riverside location





Floor Plan



These particulars, whilst believed to be accurate are set out as a general outline only for guidance and do not constitute any part of an offer or contract. Intending purchasers should not rely on them as statements of representation of fact, but must satisfy themselves by inspection or otherwise as to their accuracy. No person in this firm's employment has the authority to make or give any representation or warranty in respect of the property.

