



## 50 Holland Street London

A spacious 3 bedroom apartment to rent of this popular development located behind the Tate Modern and moments from the banks of the River Thames in Bankside.

Finished to a high specification the property features an open plan reception room, an integrated kitchen, luxury bathroom suite with separate shower.

Neo Bankside offers a 24-hour concierge and a range of resident facilities including a business centre, bike club and a residents gymnasium in addition to on-site amenities such as a Co-Op convenience store.

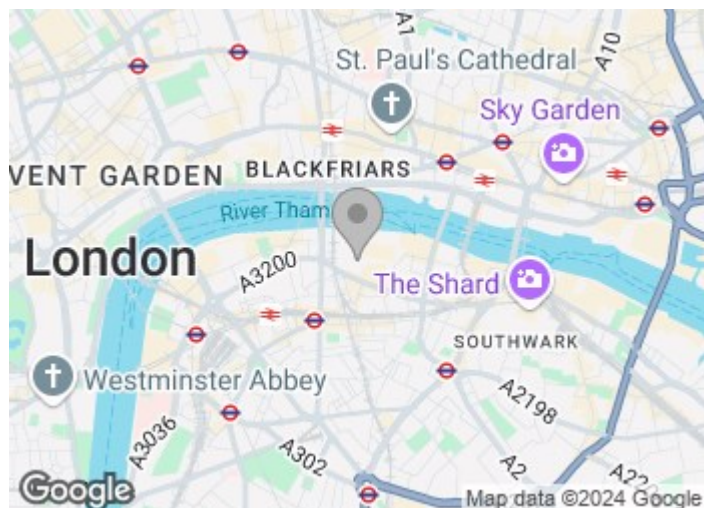
Transport links of Waterloo & Southwark are both within walking distance.

**Asking Price £1,975,000**

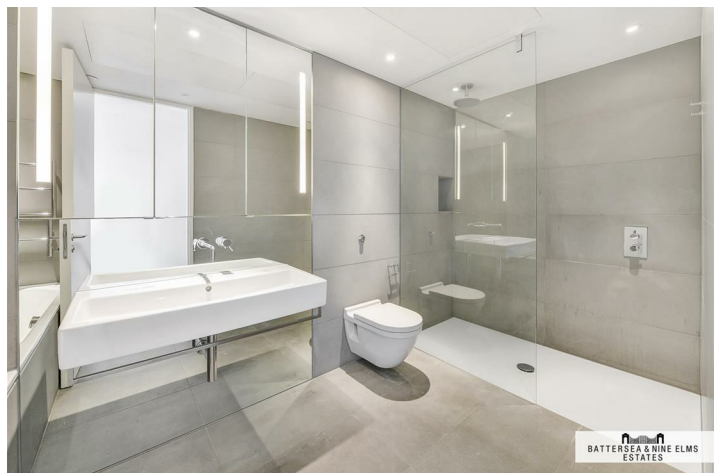
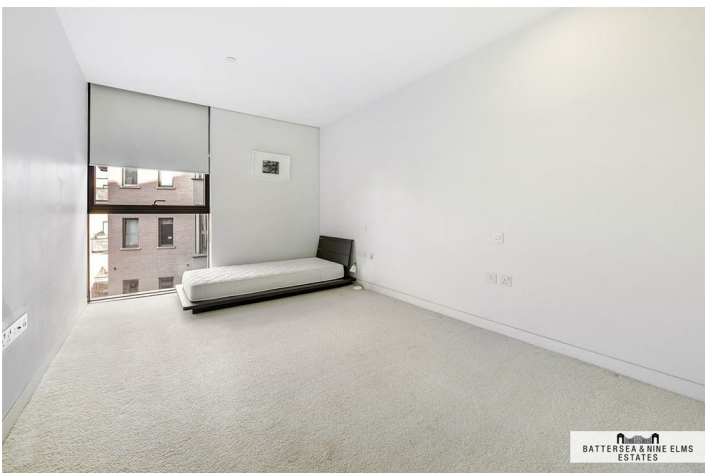
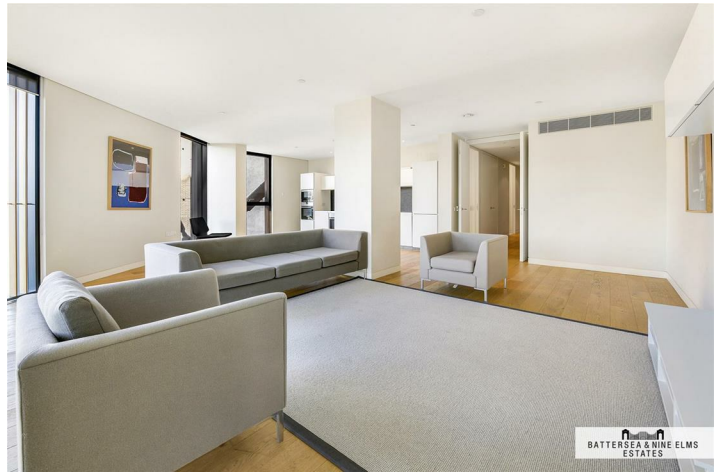
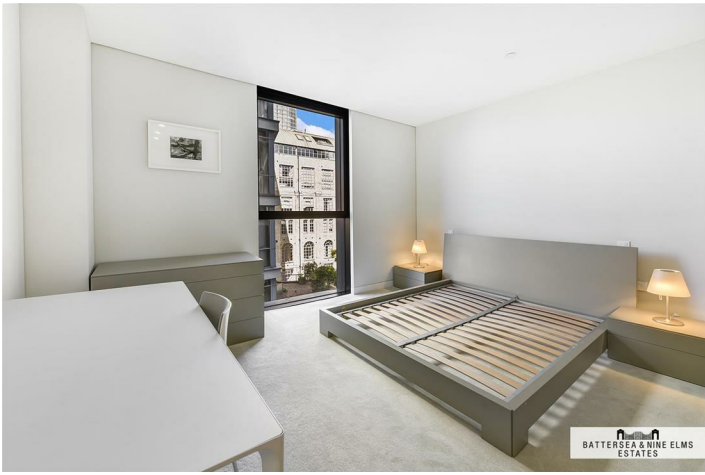
# 50 Holland Street London



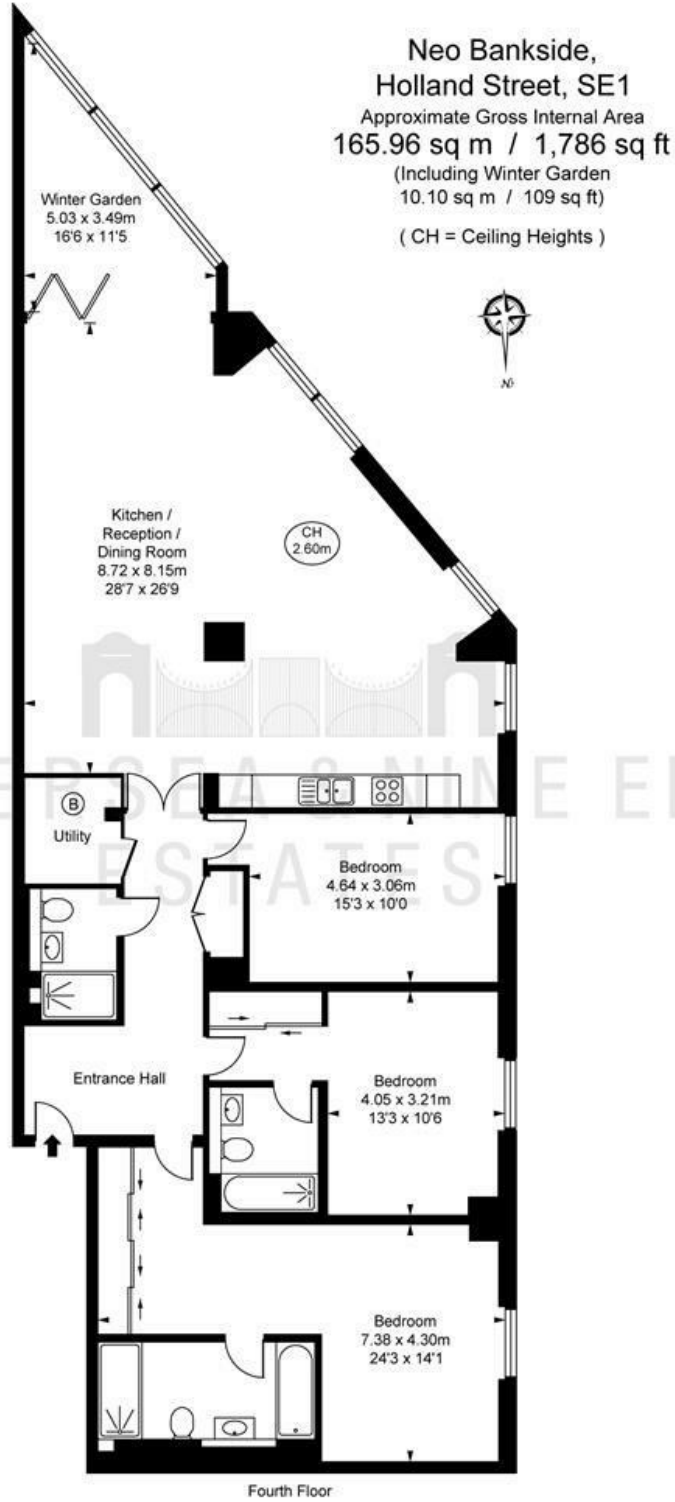
- 24 hour concierge and security
- Residents' leisure club
- Private landscaped gardens
- Three bedrooms
- Central London location
- Zone 1 transport links
- Luxury development



[Directions](#)



# Floor Plan



This plan is not to scale. It is for guidance and not for valuation purposes.  
All measurements and areas are approximate only, and have been prepared in accordance with the current edition of the RICS Code of Measuring Practice.  
© Fulham Performance

These particulars, whilst believed to be accurate are set out as a general outline only for guidance and do not constitute any part of an offer or contract. Intending purchasers should not rely on them as statements of representation of fact, but must satisfy themselves by inspection or otherwise as to their accuracy. No person in this firm's employment has the authority to make or give any representation or warranty in respect of the property.

Energy Efficiency Rating		Current	Potential	Environmental Impact (CO <sub>2</sub> ) Rating		Current	Potential
Very energy efficient - lower running costs (92 plus) <b>A</b> (81-91) <b>B</b> (69-80) <b>C</b> (55-68) <b>D</b> (39-54) <b>E</b> (21-38) <b>F</b> (1-20) <b>G</b> Not energy efficient - higher running costs		<b>86</b>	<b>86</b>	Very environmentally friendly - lower CO <sub>2</sub> emissions (92 plus) <b>A</b> (81-91) <b>B</b> (69-80) <b>C</b> (55-68) <b>D</b> (39-54) <b>E</b> (21-38) <b>F</b> (1-20) <b>G</b> Not environmentally friendly - higher CO <sub>2</sub> emissions			
England & Wales		EU Directive 2002/91/EC		England & Wales		EU Directive 2002/91/EC	