



334 Queenstown Road London

This incredible apartment offers an abundance of natural light and space. It comprises of three double bedrooms, two bathrooms (one en suite) and an open plan kitchen / reception room which leads to a private wrap around balcony overlooking Battersea Park. A 24 hour concierge is also available.

Residents will benefit from its excellent location close to the River Thames and within walking distance to Chelsea's famous stores and restaurants and zone 1 transport links.

Council Tax Band: Wandsworth - G
Minimum contract: 12 months
Change of contract fee: £50 including VAT
Lift access | Cladding: Ask agent
Holding Deposit - £1,200 (1 weeks rent, subject to agreed offer)

Electricity supply – Ask agent | Cold Water supply – Ask agent | Sewerage – Ask agent | Hot water, heating & comfort cooling – Ask agent | Internet: Ask agent | Parking available | Lift Access

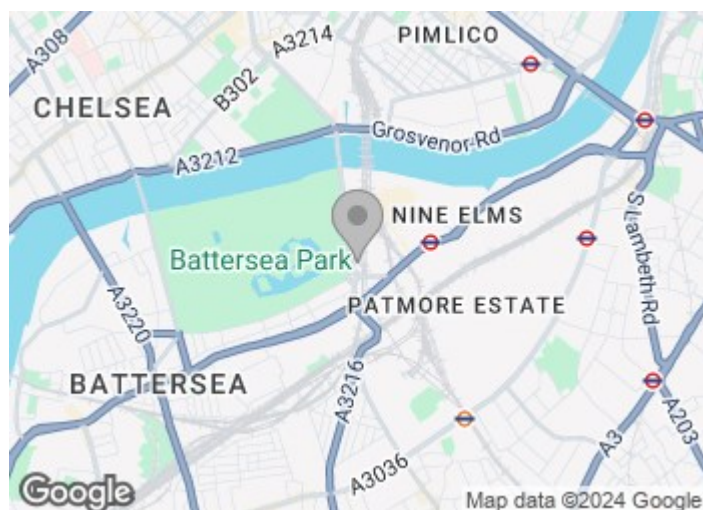
To check broadband and mobile phone coverage please visit Ofcom.
To check planning permission please visit Wandsworth Council Website, Planning & Building Control

£1,200 Per Week

334 Queenstown Road London



- Three double bedrooms
- Excellent location
- Parking available
- Two bathrooms (one en suite)
- Recently refurbished
- 24 Hour concierge
- Washer/ dryer



[Directions](#)



Floor Plan

The Bridge,
 Queenstown Road, SW8
 Approximate Gross Internal Area
 163 sq m / 1,755 sq ft

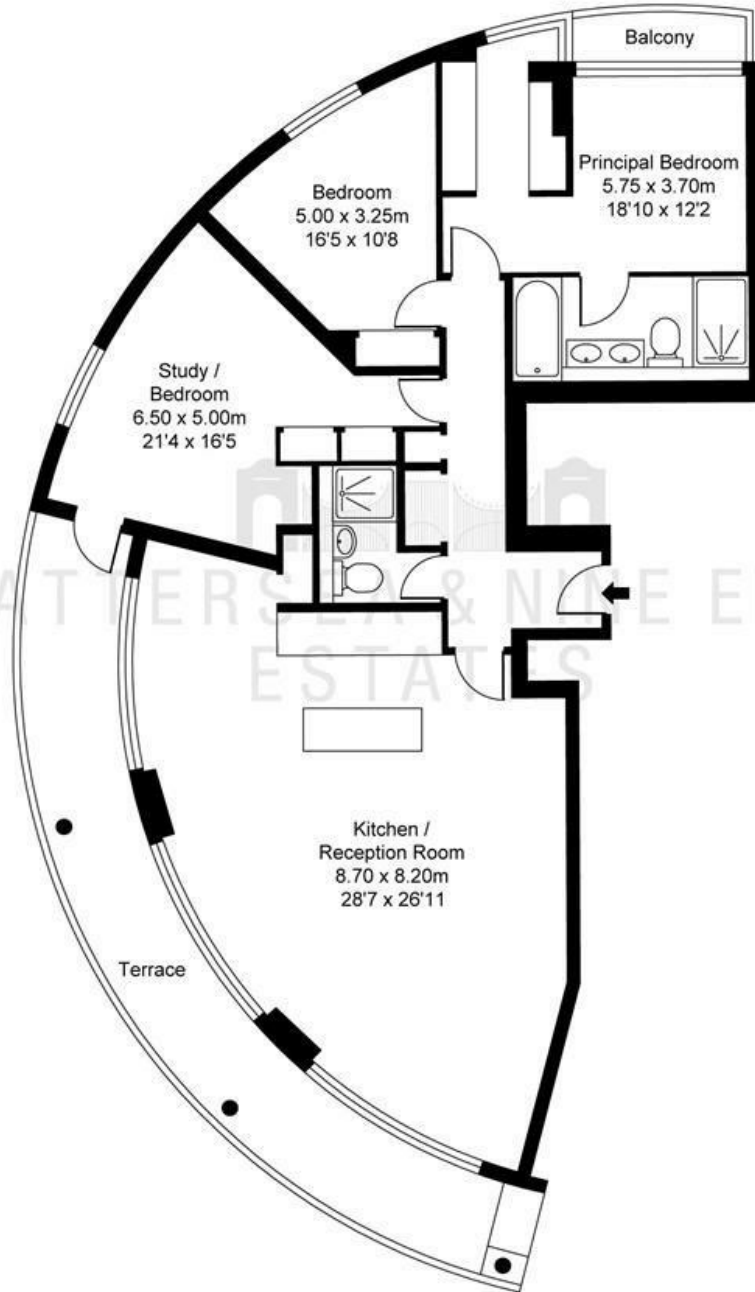


ILLUSTRATION FOR IDENTIFICATION PURPOSES ONLY
 ALL MEASUREMENTS AND AREA FIGURES SUPPLIED BY OTHERS, ACCURACY IS NOT GUARANTEED.
 THIS PLAN MUST NOT BE REPRODUCED BY ANY OTHER PERSON WITHOUT PERMISSION

These particulars, whilst believed to be accurate are set out as a general outline only for guidance and do not constitute any part of an offer or contract. Intending purchasers should not rely on them as statements of representation of fact, but must satisfy themselves by inspection or otherwise as to their accuracy. No person in this firm's employment has the authority to make or give any representation or warranty in respect of the property.

