

## 85 Royal Mint Street London

A spacious two-bedroom, two-bathroom apartment situated within the exclusive Royal Mint Gardens development which has been exceptionally designed for idyllic city living.

The apartment comprises of a large open plan reception/ living area with balcony, a bespoke kitchen fitted with integrated appliances, wooden floor throughout, underfloor heating and comfort cooling. The double bedrooms further benefit from fitted wardrobes.

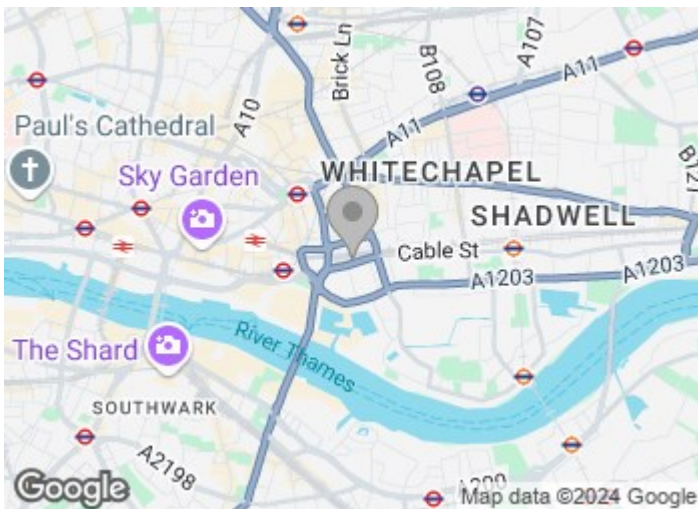
With a 24 hour concierge, residents at Royal Mint Gardens benefit from exclusive access to the wellness centre featuring - heated pool & jacuzzi, fully equipped gym, a yoga / dance studio & treatment room, residents lounge, cinema / screening room, games / recreation room and landscaped courtyard and roof terrace.

**£800 Per Week**

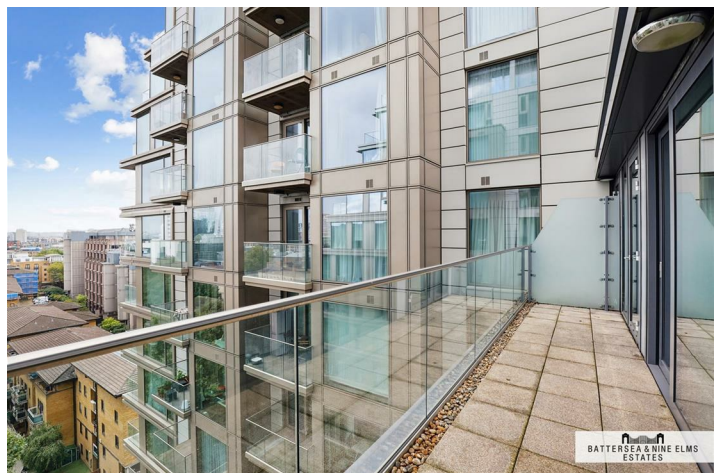
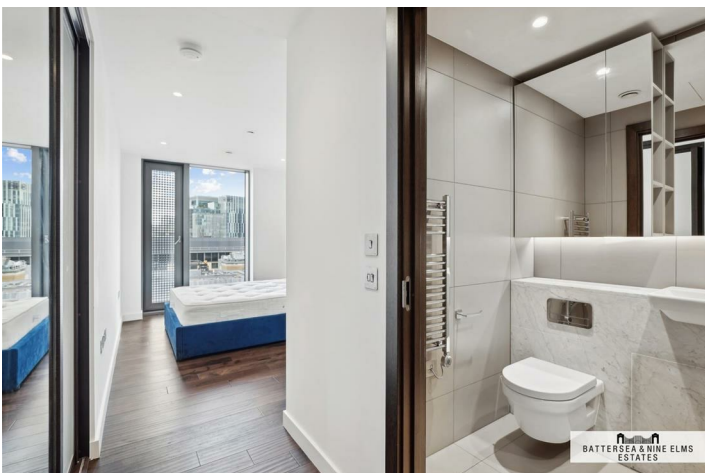
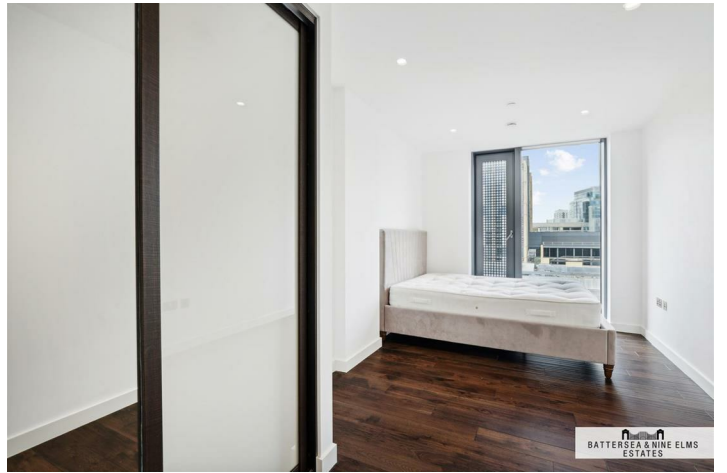
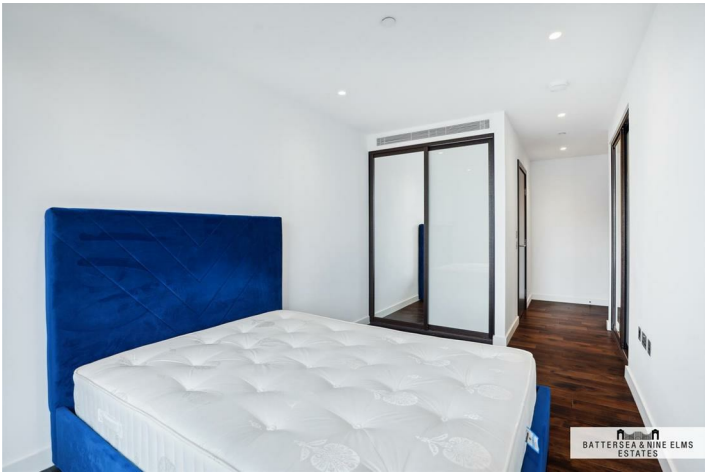
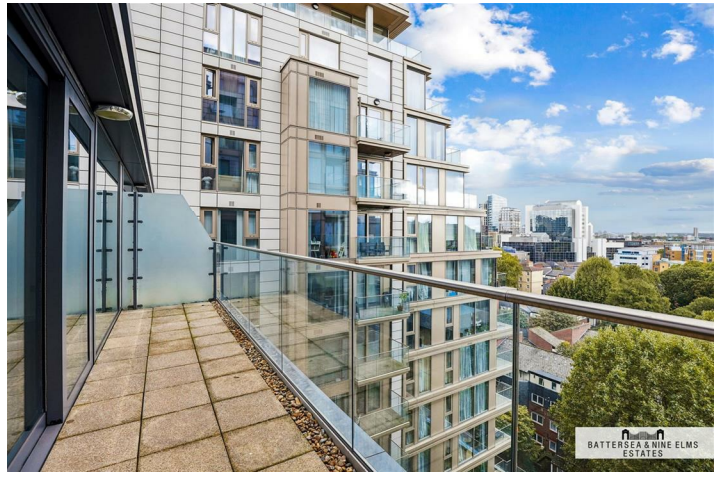
# 85 Royal Mint Street London



- Two bedrooms
- Two bathrooms
- Yoga/Dance Studio, Residents Lounge with Reading Area
- Near Tower Hill Underground Station, Tower Gateway DLR
- Integrated Heating & Cooling System



[Directions](#)



Floor Plan

Rosemary Place,  
Royal Mint Street, E1  
Approximate Gross Internal Area  
89 sq m / 962 sq ft

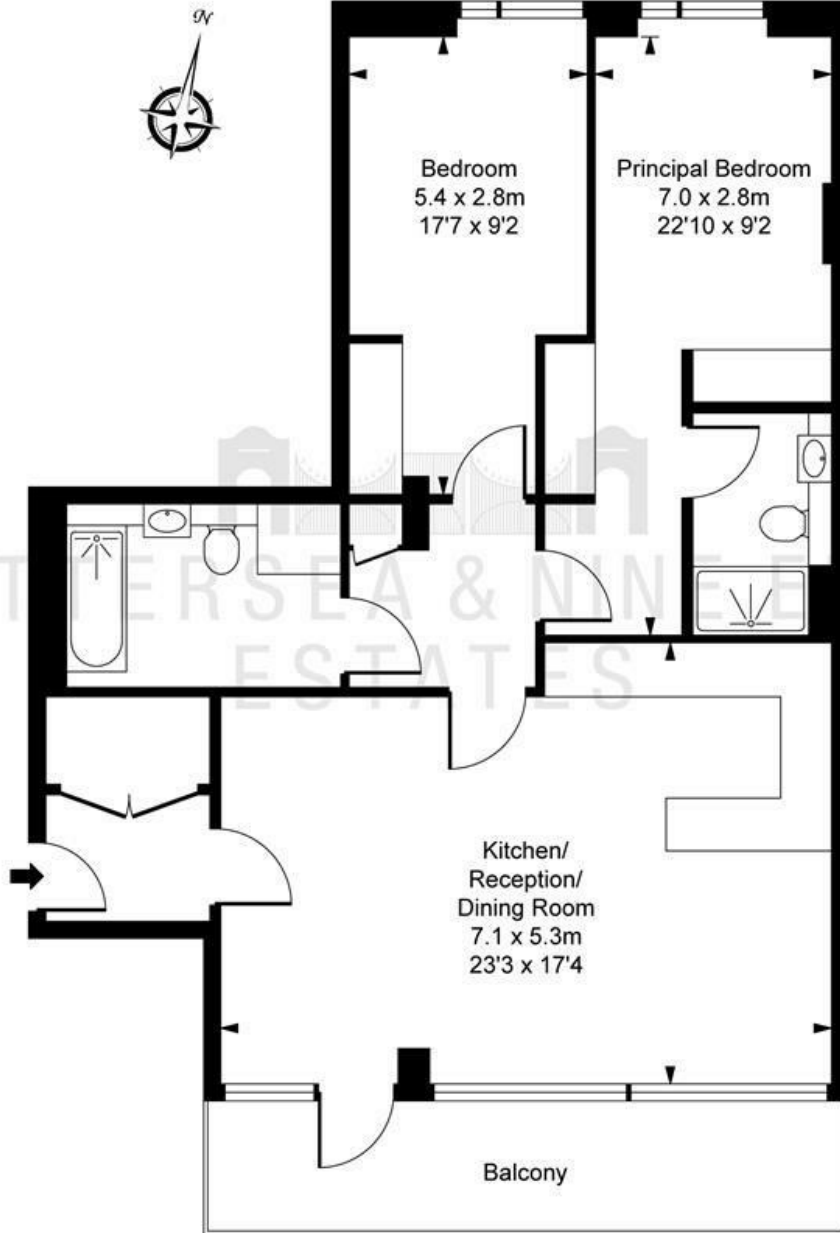


ILLUSTRATION FOR IDENTIFICATION PURPOSES ONLY  
ALL MEASUREMENTS AND AREA FIGURES SUPPLIED BY OTHERS, ACCURACY IS NOT GUARANTEED.  
THIS PLAN MUST NOT BE REPRODUCED BY ANY OTHER PERSON WITHOUT PERMISSION

These particulars, whilst believed to be accurate are set out as a general outline only for guidance and do not constitute any part of an offer or contract. Intending purchasers should not rely on them as statements of representation of fact, but must satisfy themselves by inspection or otherwise as to their accuracy. No person in this firm's employment has the authority to make or give any representation or warranty in respect of the property.

