

10 Palmer Road London

A spacious one bedroom apartment located moments from the stunning green spaces of Battersea Park. This well appointment apartment features stylish design and high specification finish, complete with fully integrated appliances and separate washer dryer.

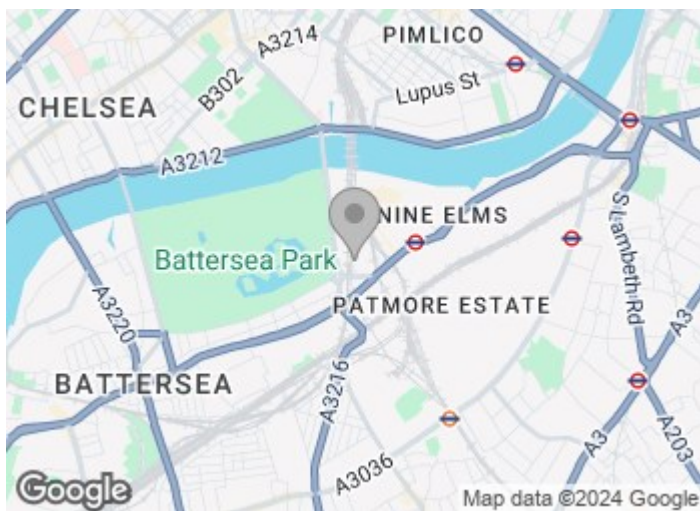
Residents will also benefit from the wonderful communal on site facilities including the swimming pool, gym, roof terrace and 24 hour concierge. Excellently located the property is steps away from Battersea Park Station and close to Chelsea with its vibrant shops, bars and restaurants.

Council Tax Band: Wandsworth D

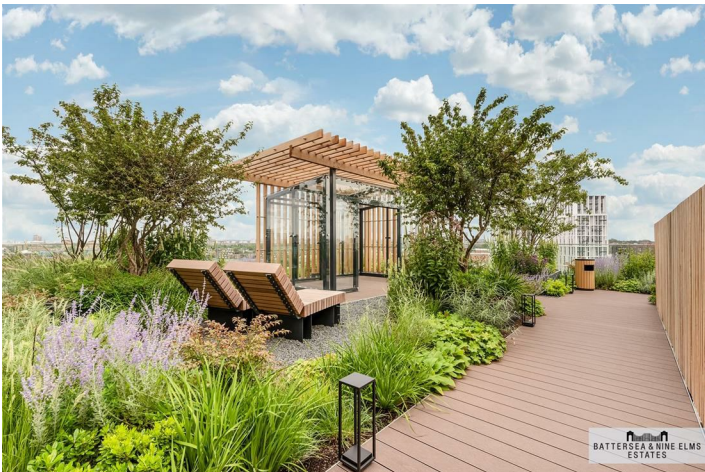
10 Palmer Road London



- One double bedroom
- Swimming pool & spa
- Private balcony
- Excellent transport links
- 24 Hour concierge



[Directions](#)



**Radley House,
Prince of Wales Drive, SW11**
Approximate Gross Internal Area
59.09 sq m / 636 sq ft

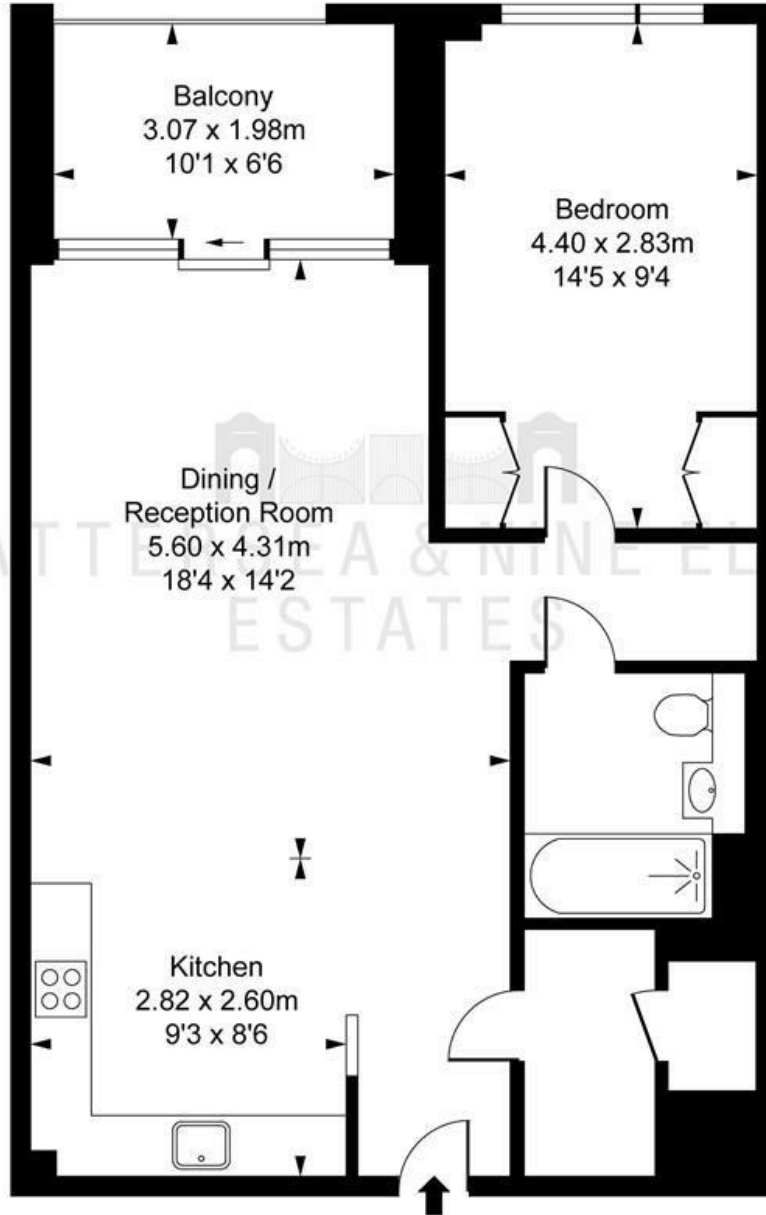


ILLUSTRATION FOR IDENTIFICATION PURPOSES ONLY
ALL MEASUREMENTS AND AREA FIGURES SUPPLIED BY OTHERS, ACCURACY IS NOT GUARANTEED.
THIS PLAN MUST NOT BE REPRODUCED BY ANY OTHER PERSON WITHOUT PERMISSION

These particulars, whilst believed to be accurate are set out as a general outline only for guidance and do not constitute any part of an offer or contract. Intending purchasers should not rely on them as statements of representation of fact, but must satisfy themselves by inspection or otherwise as to their accuracy. No person in this firm's employment has the authority to make or give any representation or warranty in respect of the property.

Energy Efficiency Rating		Current	Potential	Environmental Impact (CO ₂) Rating		Current	Potential
		82	82			86	86
<small>Very energy efficient - lower running costs</small> <small>Very environmentally friendly - lower CO₂ emissions</small>		<small>EU Directive 2002/91/EC</small>		<small>Very environmentally friendly - lower CO₂ emissions</small>		<small>EU Directive 2002/91/EC</small>	
<small>Not energy efficient - higher running costs</small>				<small>Not environmentally friendly - higher CO₂ emissions</small>			
<small>England & Wales</small>				<small>England & Wales</small>			