

8 New Union Square London

Offered unfurnished this spectacular three bedroom, three bathroom apartment is set within Embassy Gardens development. This stunning flat is located in the Capital Building, with two winter gardens. Situated in the heart of the Nine Elms regeneration area residents will benefit from excellent public transports links and outstanding communal facilities including a fitness centre, private cinema and residents library. This apartment includes secure parking.

Council Tax Band: Wandsworth - G
Minimum contract: 12 months
Change of contract fee: £50 including VAT

£1,615 Per Week

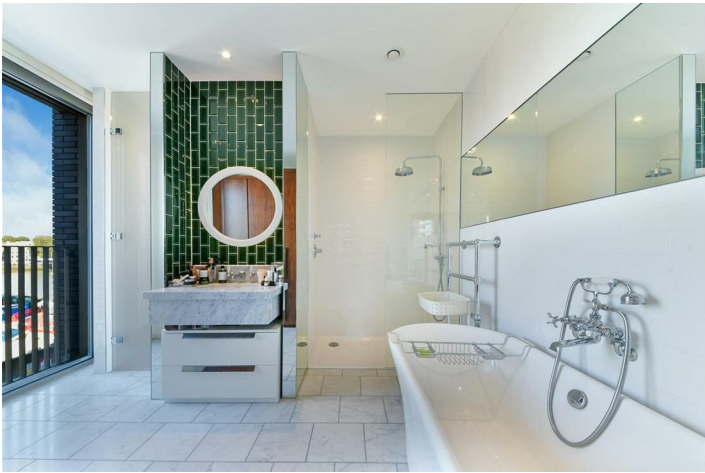
8 New Union Square London



- Three bedrooms
- Two bathrooms
- Winter Garden
- Swimming pool
- 24 hour concierge
- Gym and spa



[Directions](#)



BATTERSEA & NINE ELMS
ESTATES

BATTERSEA & NINE ELMS
ESTATES

Floor Plan

Ambassador Building,
Embassy Gardens, SW8
Approximate Gross Internal Area
101.50 sq m / 1,093 sq ft

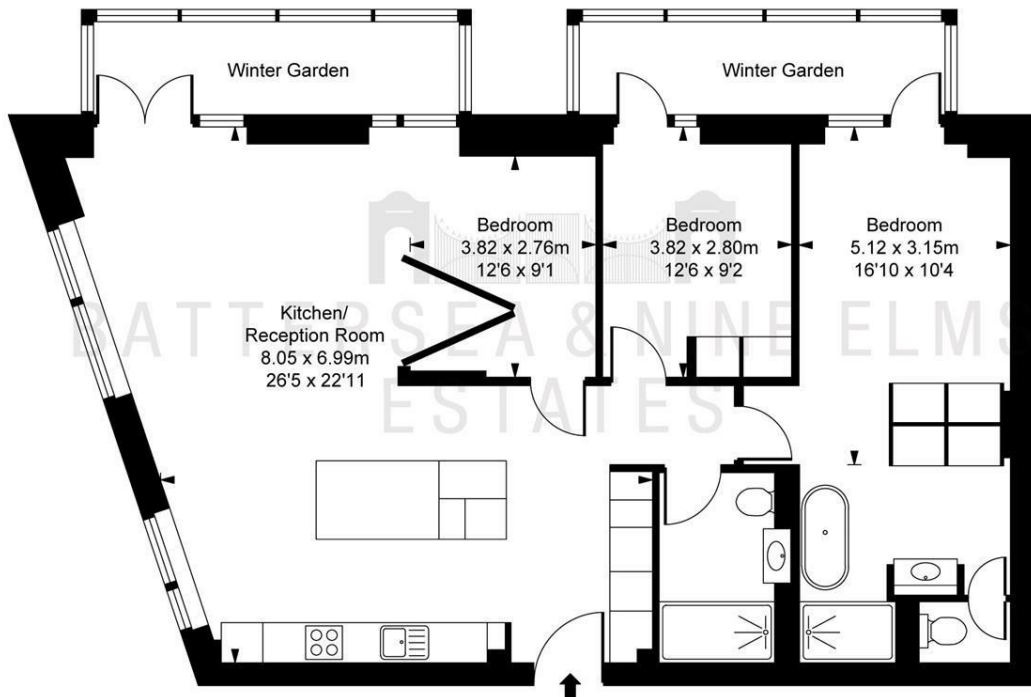


ILLUSTRATION FOR IDENTIFICATION PURPOSES ONLY
ALL MEASUREMENTS AND AREA FIGURES SUPPLIED BY OTHERS. ACCURACY IS NOT GUARANTEED.
THIS PLAN MUST NOT BE REPRODUCED BY ANY OTHER PERSON WITHOUT PERMISSION

These particulars, whilst believed to be accurate are set out as a general outline only for guidance and do not constitute any part of an offer or contract. Intending purchasers should not rely on them as statements of representation of fact, but must satisfy themselves by inspection or otherwise as to their accuracy. No person in this firm's employment has the authority to make or give any representation or warranty in respect of the property.

