

8 New Union Square London

Set within the desirable Embassy Gardens development, this spacious two bedroom, two bathroom apartment is located in heart of the Nine Elms regeneration area. Residents benefit from excellent public transports links and outstanding communal facilities including a fitness centre, private cinema and residents library.

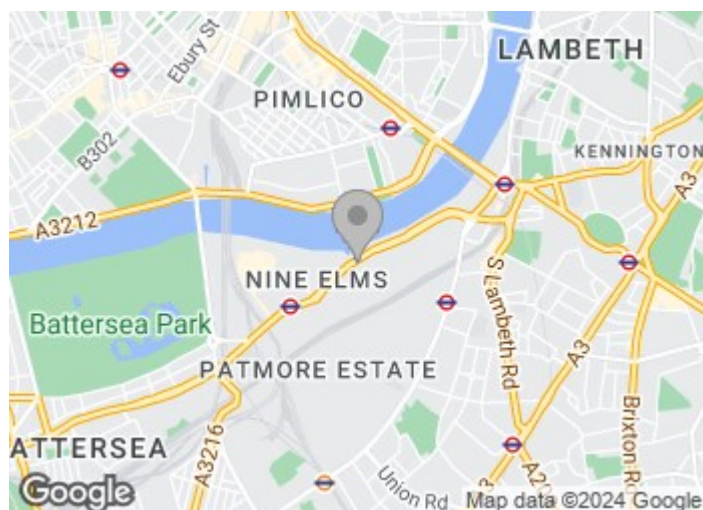
Council Tax Band: Wandsworth - G
Minimum contract: 12 months
Change of contract fee: £50 including VAT
Lift access | Cladding: EWS1 Certificate available

£975 Per Week

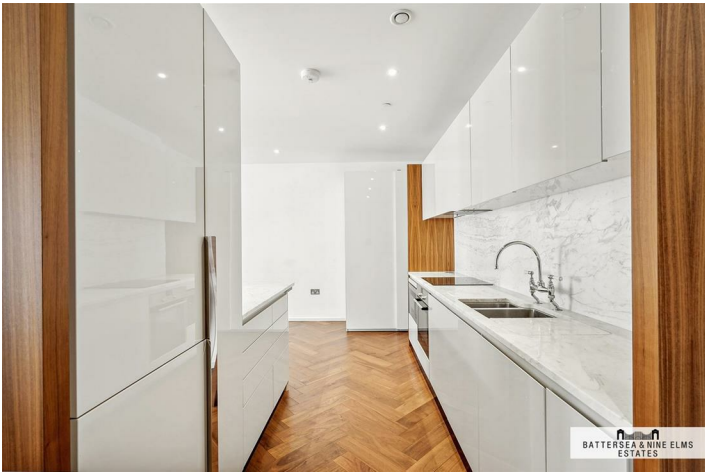
8 New Union Square London



- Two bedrooms
- 24 Hour concierge
- Residents club lounge & library
- Two bathrooms
- Residents gym & swimming pool
- Excellent transport links
- Contemporary design
- Residents cinema suite
- Winter garden



[Directions](#)



BATTERSEA & NINE ELMS
ESTATES



BATTERSEA & NINE ELMS
ESTATES



BATTERSEA & NINE ELMS
ESTATES



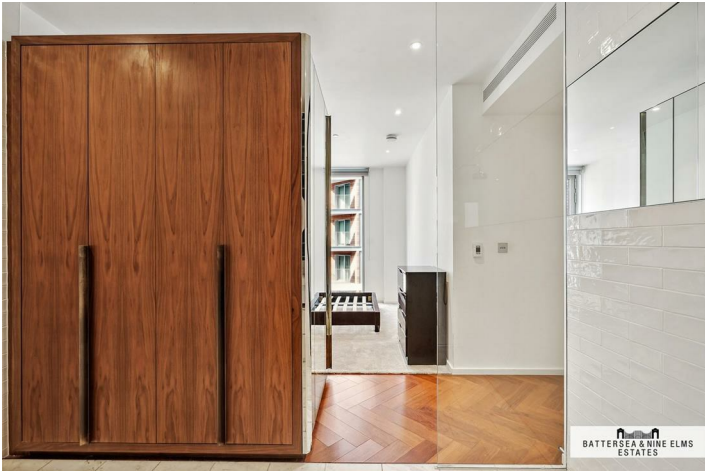
BATTERSEA & NINE ELMS
ESTATES



BATTERSEA & NINE ELMS
ESTATES



BATTERSEA & NINE ELMS
ESTATES



BATTERSEA & NINE ELMS
ESTATES



BATTERSEA & NINE ELMS
ESTATES

Capital Building ,
Embassy Gardens, SW8
Approximate Gross Internal Area
89.30sq m / 961 sq ft

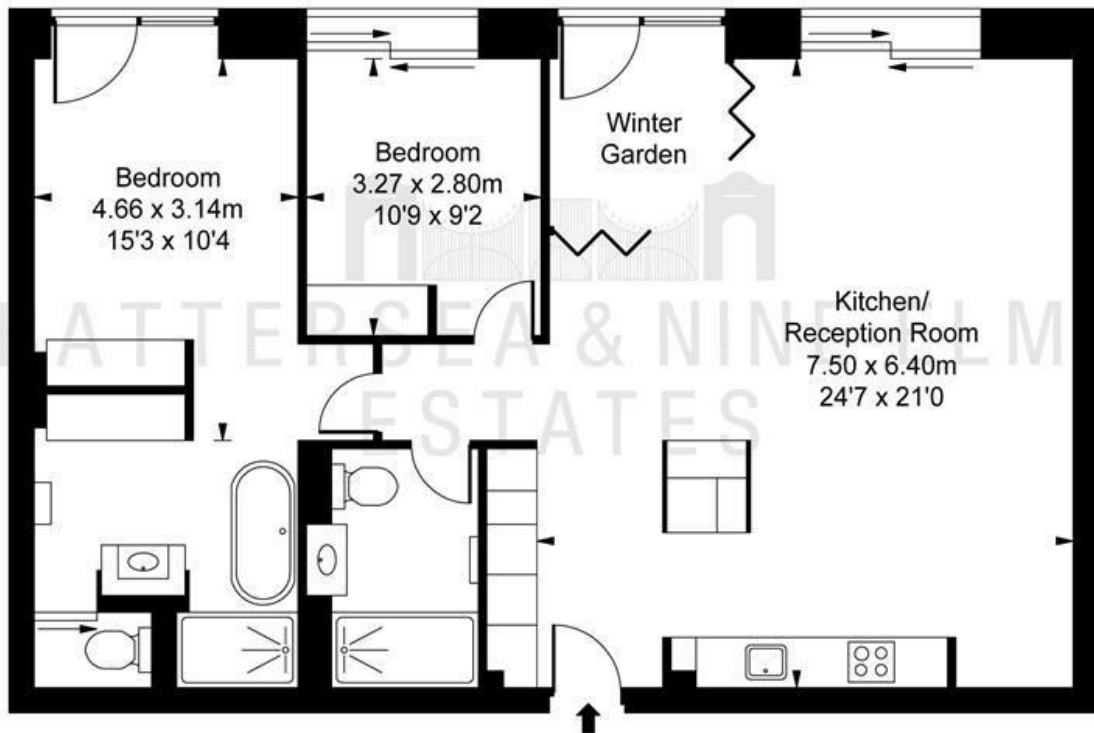


ILLUSTRATION FOR IDENTIFICATION PURPOSES ONLY
ALL MEASUREMENTS AND AREA FIGURES SUPPLIED BY OTHERS. ACCURACY IS NOT GUARANTEED.
THIS PLAN MUST NOT BE REPRODUCED BY ANY OTHER PERSON WITHOUT PERMISSION

These particulars, whilst believed to be accurate are set out as a general outline only for guidance and do not constitute any part of an offer or contract. Intending purchasers should not rely on them as statements of representation of fact, but must satisfy themselves by inspection or otherwise as to their accuracy. No person in this firm's employment has the authority to make or give any representation or warranty in respect of the property.

