

1 Viaduct Gardens London

A beautiful one bedroom apartment set within Legacy Building, the exclusive Embassy Gardens development. The apartment features an open plan living space with kitchen and a Juliette balcony. The interior has been designed to the highest specification with oak flooring, natural granite counter tops and integrated appliances. The bedroom also finished to the highest standard comes with broad loom carpet, floor to ceiling windows and comfort cooling.

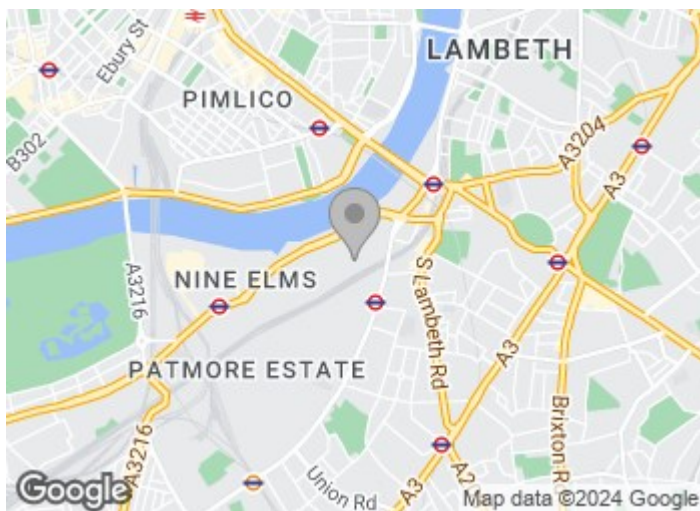
Residents can take advantage of the exciting communal amenities including the wonderful Sky Pool, Sky Deck and Orangery restaurant as well as the gym, spa and private cinema. The development further benefits from its excellent location close to zone one transport links including Vauxhall & Nine Elms stations.

£800 Per Week

1 Viaduct Gardens London



- One bedroom
- Sky pool and deck
- Residents library
- One bathroom
- Gym and spa
- 24 Hour concierge
- Juliette balcony
- Private cinema



[Directions](#)



Legacy Building, Embassy Gardens, SW11

Approximate Gross Internal Area
50.00 sq m / 538 sq ft

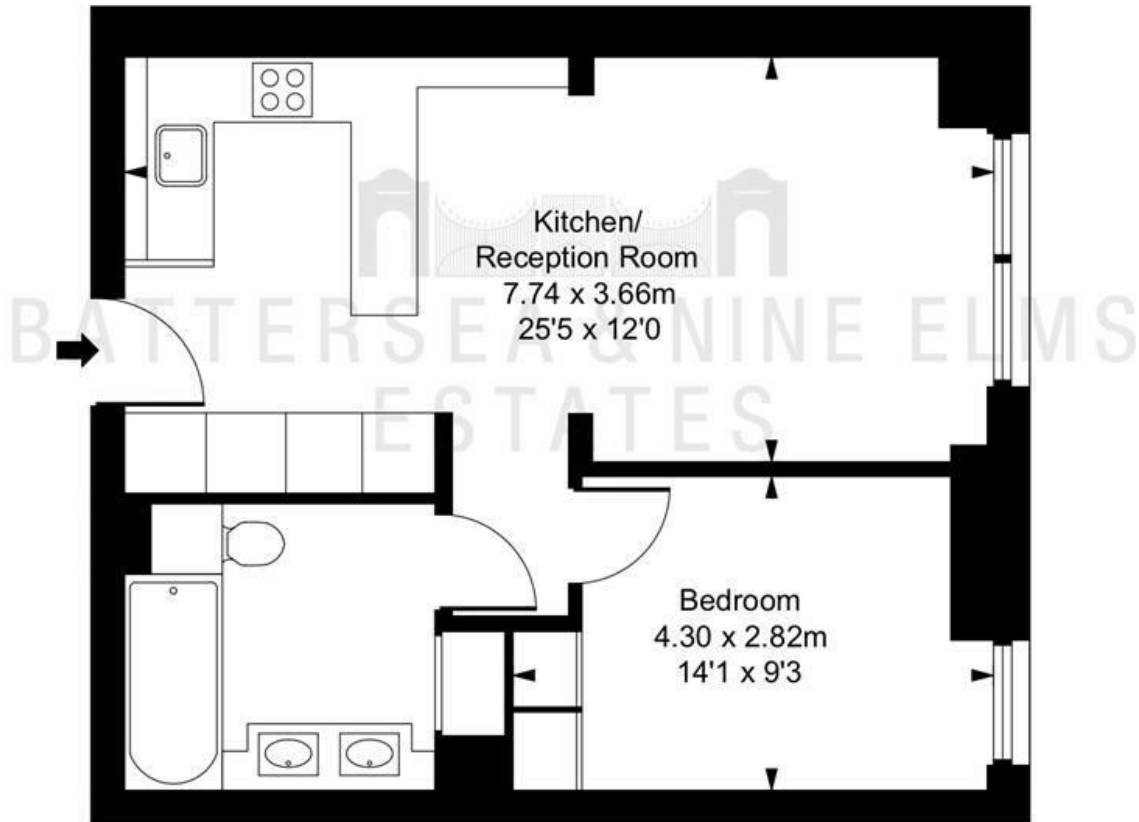


ILLUSTRATION FOR IDENTIFICATION PURPOSES ONLY
ALL MEASUREMENTS ARE MAXIMUM, AND INCLUDE WINDOW BAYS AND WARDROBES WHERE APPLICABLE
THIS PLAN MUST NOT BE REPRODUCED BY ANY OTHER PERSON WITHOUT PERMISSION

These particulars, whilst believed to be accurate are set out as a general outline only for guidance and do not constitute any part of an offer or contract. Intending purchasers should not rely on them as statements of representation of fact, but must satisfy themselves by inspection or otherwise as to their accuracy. No person in this firm's employment has the authority to make or give any representation or warranty in respect of the property.

