

22 Hanover Square London

This stunning boutique hotel is situated in the heart of London's most exclusive and iconic neighbourhoods.

This amazing studio apartment is located within the sought after Mandarin Oriental Hotel in the centre of Mayfair; part of the stunning boutique hotel is situated in the heart of London's most exclusive and iconic neighbourhoods. Residents can take advantage of the beautiful Hanover Square just moments from the Hotel. The apartment offers understated luxury and space in an open-plan design with a sitting area bathed in natural light

Residents will benefit from the dedicated team of full-time Mandarin Oriental trained staff including a 24-hour concierge, valet, maintenance, housekeeping, and security to manage your daily life.

£1,400 Per Week

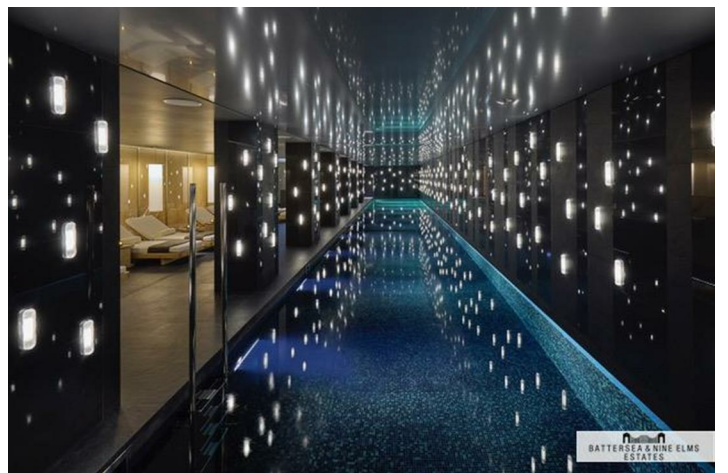
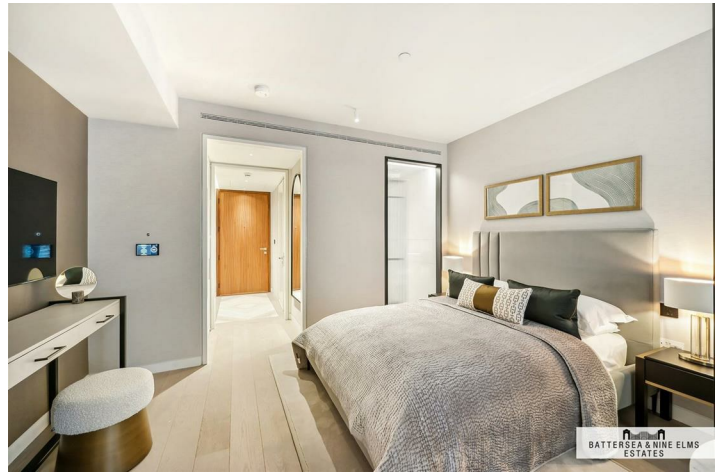
22 Hanover Square London



- Studio apartment
- One bathroom
- 24 hour concierge
- Roof Terrace
- Gymnasium & Spa
- Sauna
- Access to the hotel's restaurant and signature bar

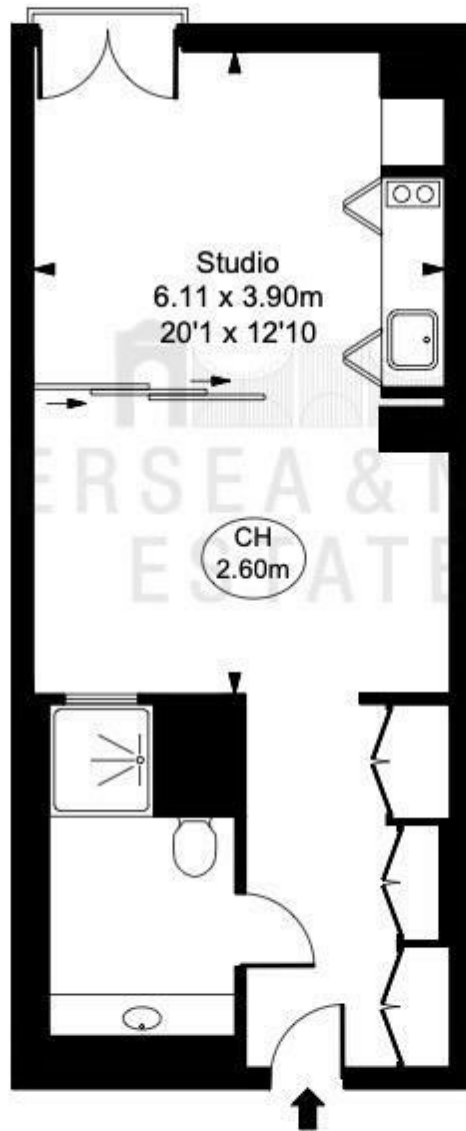


[Directions](#)



**Mandarin Oriental,
Hanover Square, W1S**
Approximate Gross Internal Area
36.79 sq m / 396 sq ft

(CH = Ceiling Heights)



Second Floor

This plan is not to scale. It is for guidance and not for valuation purposes.
All measurements and areas are approximate only, and have been prepared in accordance with the current edition of the RICS Code of Measuring Practice.
© Fulham Performance

These particulars, whilst believed to be accurate are set out as a general outline only for guidance and do not constitute any part of an offer or contract. Intending purchasers should not rely on them as statements of representation of fact, but must satisfy themselves by inspection or otherwise as to their accuracy. No person in this firm's employment has the authority to make or give any representation or warranty in respect of the property.

Energy Efficiency Rating		Current	Potential	Environmental Impact (CO ₂) Rating		Current	Potential
Very energy efficient - lower running costs	(92 plus) A			Very environmentally friendly - lower CO ₂ emissions	(92 plus) A		
(81-91) B				(81-91) B			
(69-80) C				(69-80) C			
(55-68) D				(55-68) D			
(39-54) E				(39-54) E			
(21-38) F				(21-38) F			
(1-20) G				(1-20) G			
Not energy efficient - higher running costs				Not environmentally friendly - higher CO ₂ emissions			
England & Wales		EU Directive 2002/91/EC		England & Wales		EU Directive 2002/91/EC	