

11 Circus Road West London

This contemporary two bedroom apartment is set within Dawson House, Battersea Power Station. Featuring bespoke interior design, this stunning apartment offers luxury accommodation and high end fully integrated Siemens appliances such as a dishwasher and combination washer/dryer. The property also benefits from comfort cooling.

Residents of the Battersea Power Station development will have a selection of vibrant shops, restaurants and leisure spaces available to them. Dawson House is located in the West phase of the complex ideally situated for the River Thames, Chelsea, Battersea Park and local tube and rail stations.

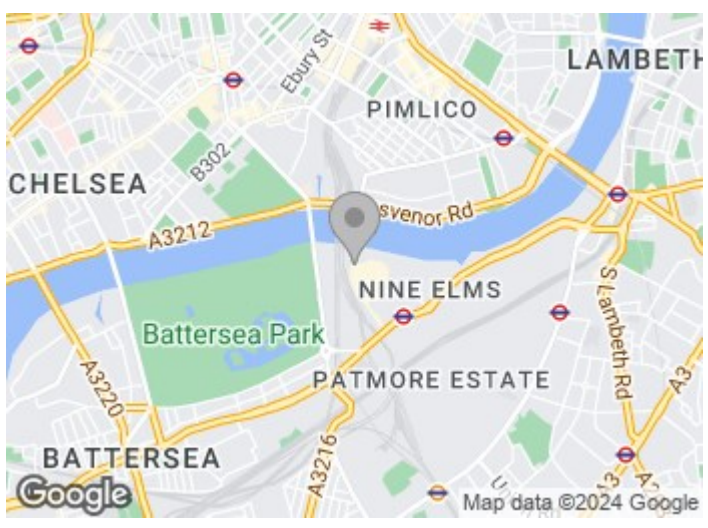
Council Tax Band: Wandsworth - F

£985 Per Week

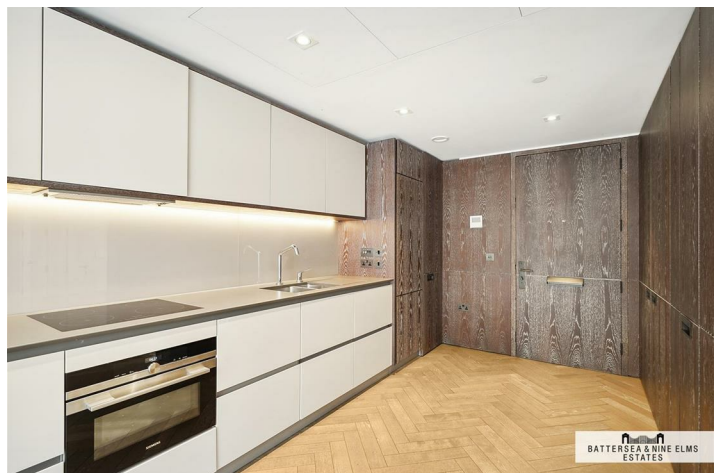
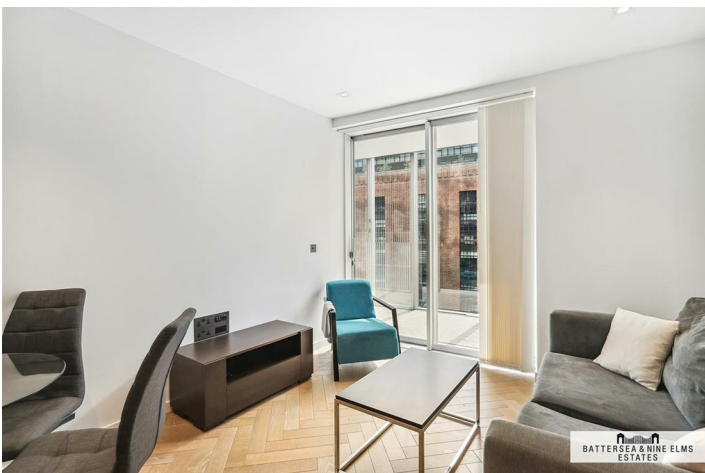
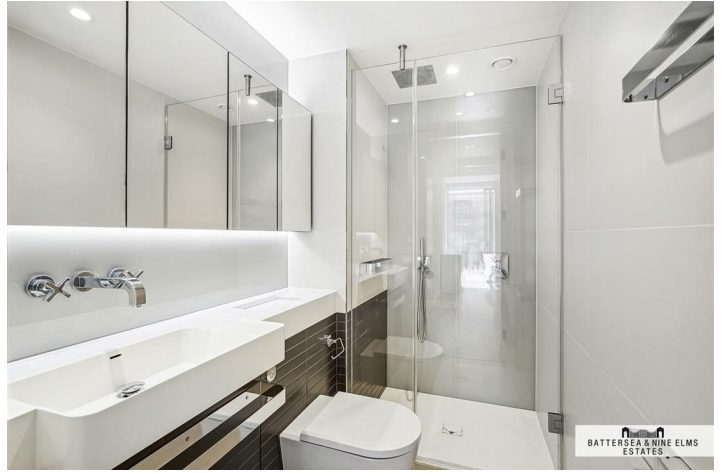
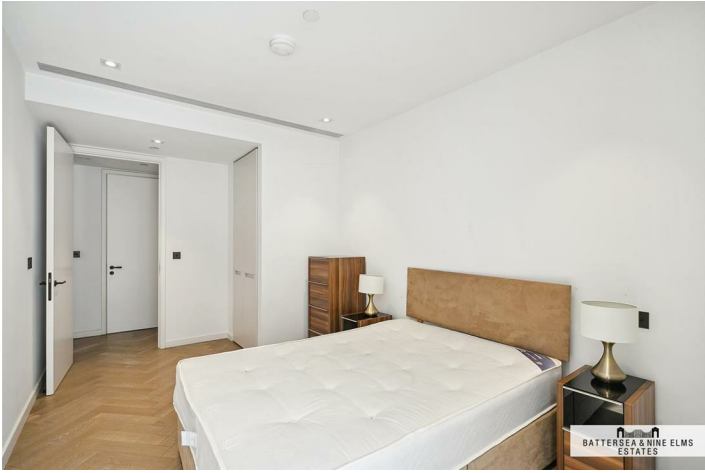
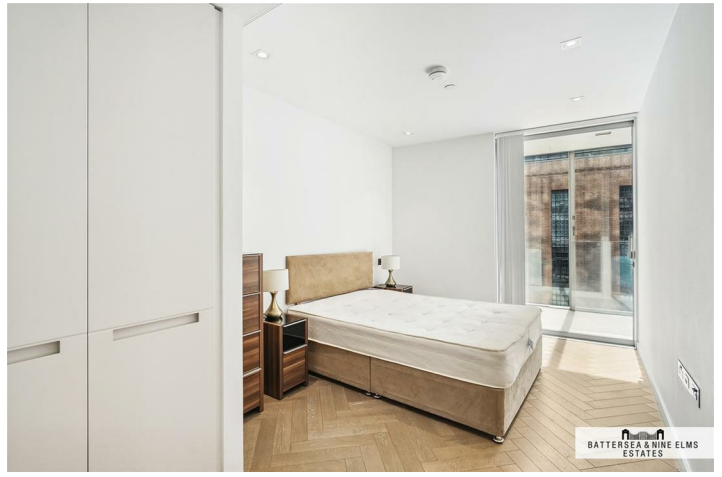
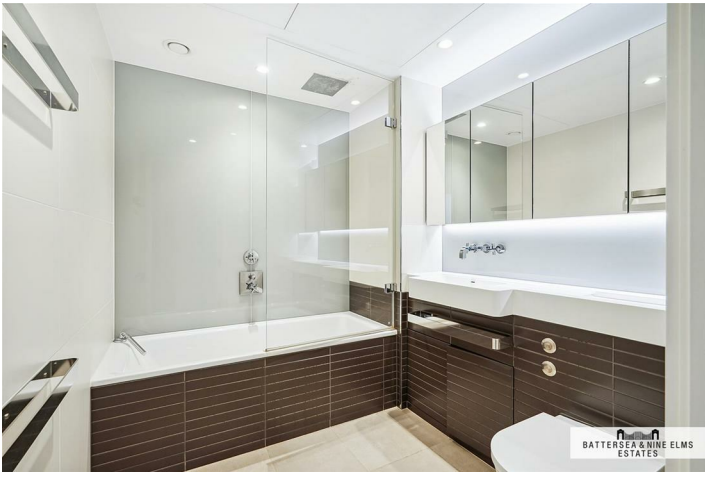
11 Circus Road West London



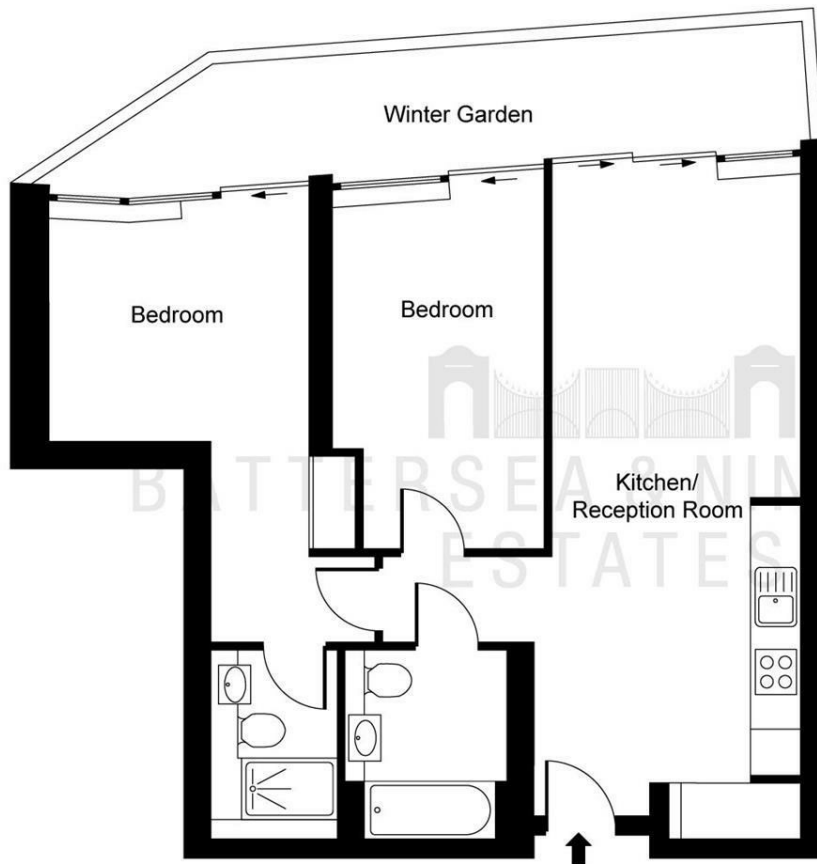
- Two double bedrooms
- Two bathrooms
- Residents lounge & bar
- Residents cinema
- 24 Hour concierge
- Zone 1 transport links



[Directions](#)



Floor Plan



**Dawson House,
Battersea Power Station, SW8**
 Approximate Gross Internal Area
 70.60 sq m / 760 sq ft
 Winter Garden
 13.80 sq m / 149 sq ft

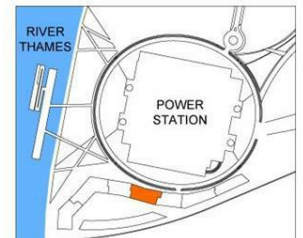


ILLUSTRATION FOR IDENTIFICATION PURPOSES ONLY
 ALL MEASUREMENTS AND AREA FIGURES SUPPLIED BY OTHERS, ACCURACY IS NOT GUARANTEED.
 THIS PLAN MUST NOT BE REPRODUCED BY ANY OTHER PERSON WITHOUT PERMISSION

These particulars, whilst believed to be accurate are set out as a general outline only for guidance and do not constitute any part of an offer or contract. Intending purchasers should not rely on them as statements of representation of fact, but must satisfy themselves by inspection or otherwise as to their accuracy. No person in this firm's employment has the authority to make or give any representation or warranty in respect of the property.

