

Fountain Park Way London

A luxurious two bedroom, two bathroom apartment situated in a prime location just moments from White City & Wood Lane Underground Stations and Westfield shopping centre.

Resident benefit from stunning communal facilities which include a 24 hour concierge, swimming pool and gym, in addition to a private residents lounge and meeting room.

Minimum contract: 12 months

Council tax band : F

Change of contract fee: £50 including VAT

£975 Per Week

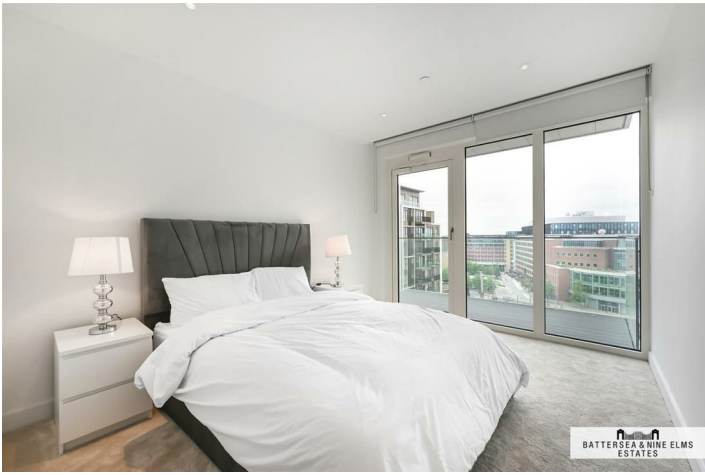
Fountain Park Way London



- Two double bedrooms
- Two bathrooms
- 24 Hour concierge
- Excellent transport links
- Swimming pool
- Meeting room



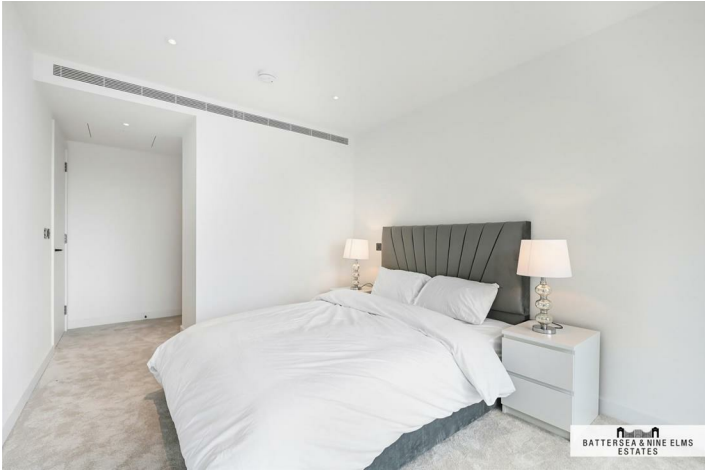
Directions



BATTERSEA & NINE ELMS
ESTATES



BATTERSEA & NINE ELMS
ESTATES



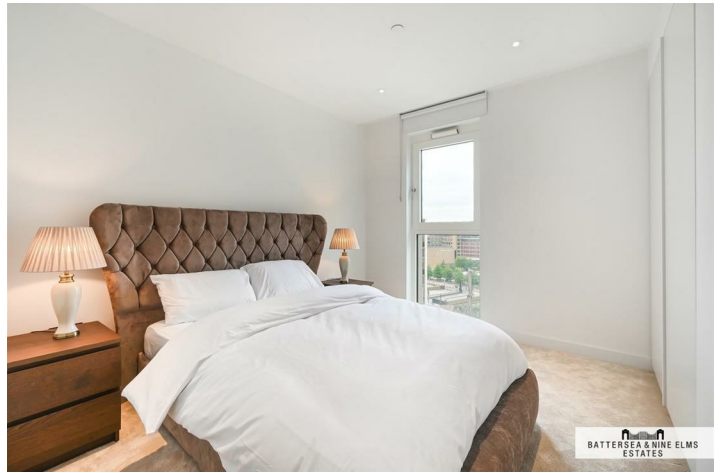
BATTERSEA & NINE ELMS
ESTATES



BATTERSEA & NINE ELMS
ESTATES



BATTERSEA & NINE ELMS
ESTATES



BATTERSEA & NINE ELMS
ESTATES



BATTERSEA & NINE ELMS
ESTATES



WHITE
CITY
LIVING

DISTRICTS

Belvedere Apartments, White City, W12

Approximate Gross Internal Area
87.30 sq m / 940 sq ft

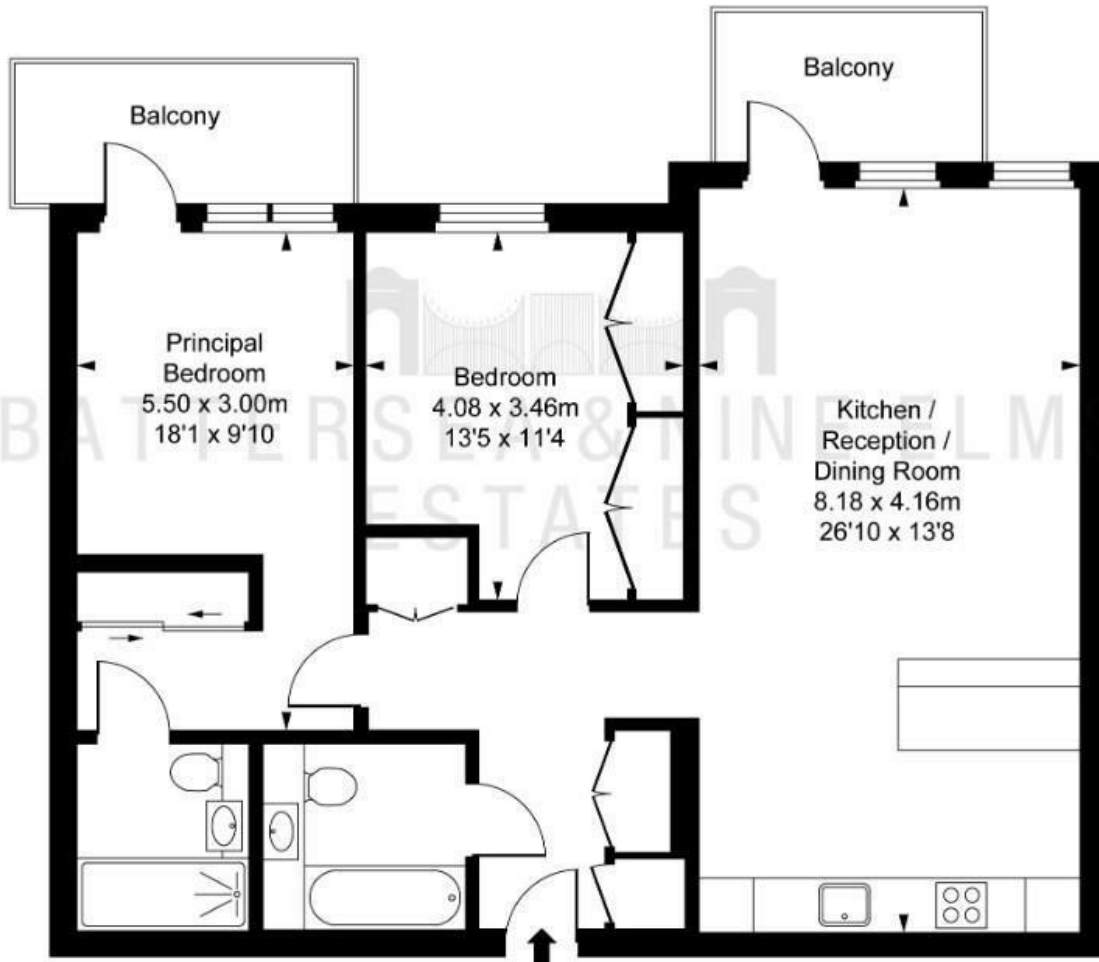


ILLUSTRATION FOR IDENTIFICATION PURPOSES ONLY
ALL MEASUREMENTS AND AREA FIGURES SUPPLIED BY OTHERS. ACCURACY IS NOT GUARANTEED.
THIS PLAN MUST NOT BE REPRODUCED BY ANY OTHER PERSON WITHOUT PERMISSION

These particulars, whilst believed to be accurate are set out as a general outline only for guidance and do not constitute any part of an offer or contract. Intending purchasers should not rely on them as statements of representation of fact, but must satisfy themselves by inspection or otherwise as to their accuracy. No person in this firm's employment has the authority to make or give any representation or warranty in respect of the property.

