



11 Circus Road West London

An exceptional two bedroom apartment located in Dawson House, Battersea Power Station. Offering bright and spacious accommodation the property benefits from a modern fitted kitchen, complete with fully integrated appliances and two bespoke designed bathrooms exuding luxury.

In an aim to offer the epitome of city living this iconic development boasts a selection of vibrant shops, restaurants and leisure spaces all on the doorstep of its residents. Dawson House is located in the West phase of the complex ideally situated for the River Thames, Chelsea, Battersea Park and local tube and rail stations.

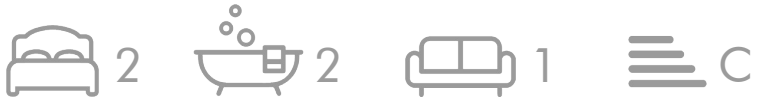
Council Tax Band: Wandsworth - G
Minimum contract: 12 months
Change of contract fee: £50 including VAT
Lift access | Cladding: EWS1 Certificate available
Holding Deposit - £950 (1 weeks rent, subject to agreed offer)

Electricity supply – Mains | Cold Water supply – Mains | Sewerage – Mains | Hot water, heating & comfort cooling – Mains | Internet: Fibre | Parking available by separate negotiation |

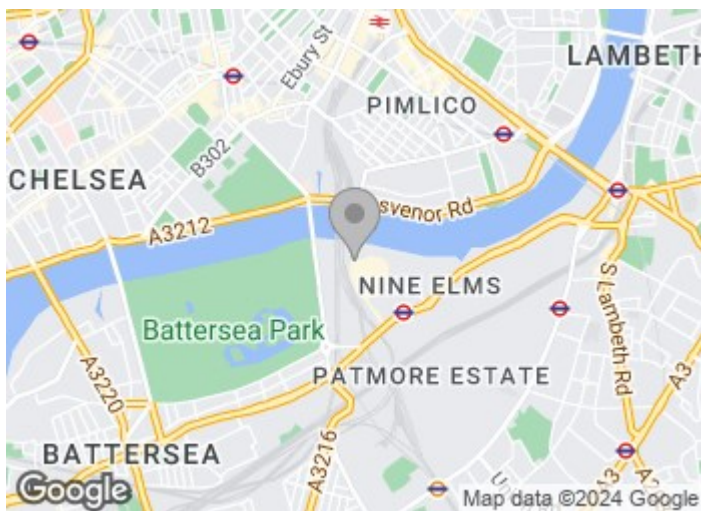
To check broadband and mobile phone coverage please visit Ofcom.
To check planning permission please visit Wandsworth Council Website, Planning & Building Control

£950 Per Week

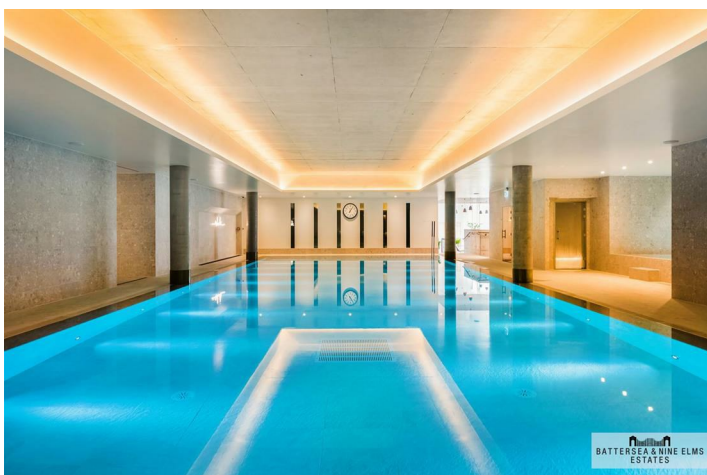
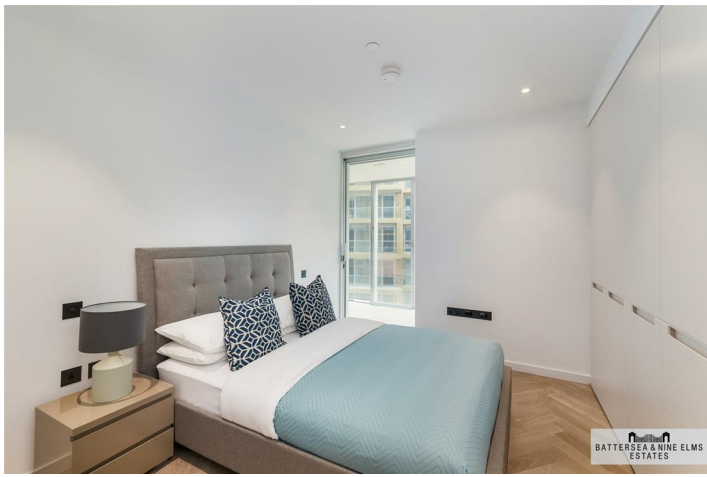
11 Circus Road West London



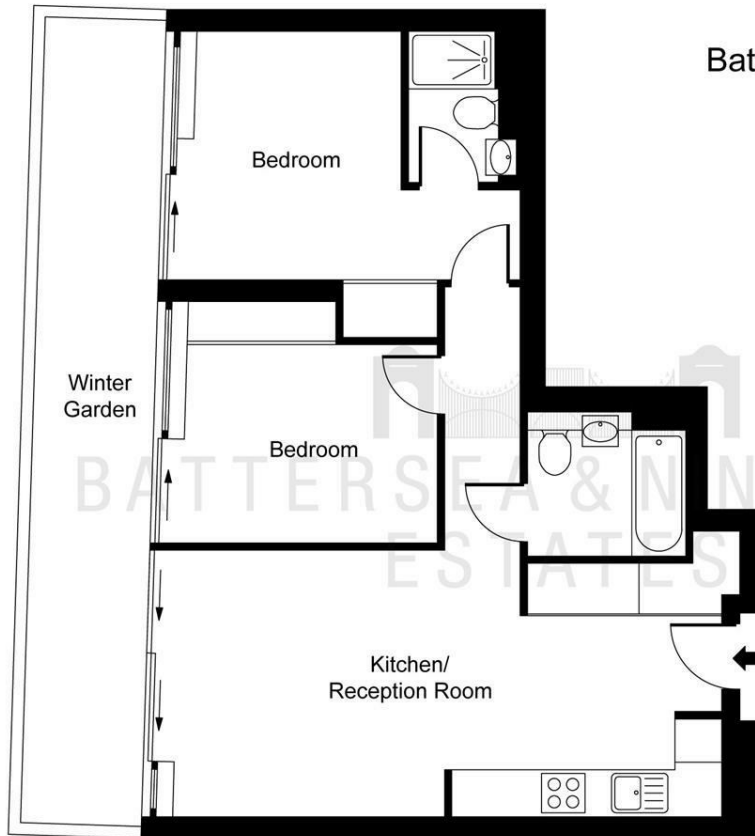
- Two double bedrooms
- Two bathrooms
- Residents lounge & bar
- Residents cinema
- 24 Hour concierge
- Zone 1 transport links



[Directions](#)



Floor Plan



Dawson House,
Battersea Power Station, SW8
 Approximate Gross Internal Area
67.80 sq m / 730 sq ft
 Winter Garden
17.20 sq m / 185 sq ft

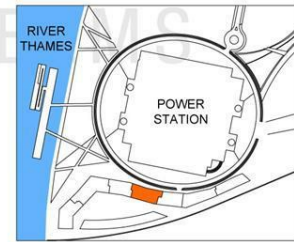


ILLUSTRATION FOR IDENTIFICATION PURPOSES ONLY
 ALL MEASUREMENTS AND AREA FIGURES SUPPLIED BY OTHERS, ACCURACY IS NOT GUARANTEED.
 THIS PLAN MUST NOT BE REPRODUCED BY ANY OTHER PERSON WITHOUT PERMISSION

These particulars, whilst believed to be accurate are set out as a general outline only for guidance and do not constitute any part of an offer or contract. Intending purchasers should not rely on them as statements of representation of fact, but must satisfy themselves by inspection or otherwise as to their accuracy. No person in this firm's employment has the authority to make or give any representation or warranty in respect of the property.

