

30 Ponton Road London

A wonderful one bedroom apartment situated in The Residence development ideally located for zone one transport links from Vauxhall & Nine Elms stations.

The property features an open plan kitchen and living space with a separate private balcony. Finished to the highest standard apartments include AEG fully integrated appliances including washer/dryer, oven and microwave as well as underfloor heating throughout.

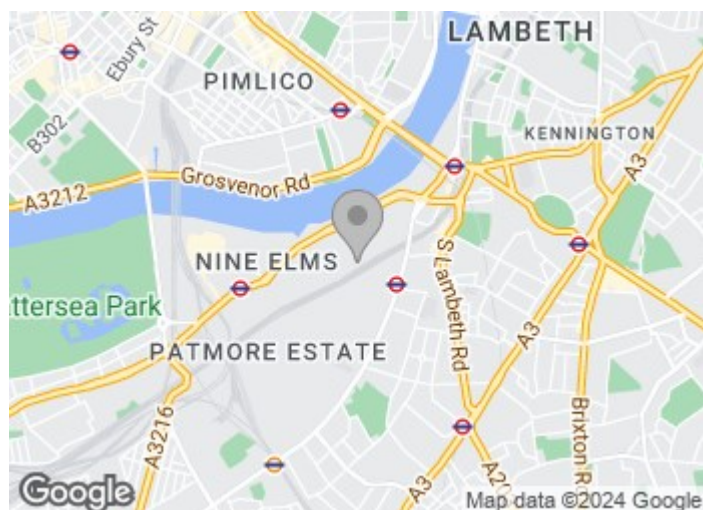
Residents will also benefit from the wonderful onsite amenities including the gym, yoga room, private cinema and meeting rooms.

£650 Per Week

30 Ponton Road London



- One bedroom
- Under floor heating
- Gym
- One bathroom
- Private cinema
- Private balcony
- Excellent transport links



[Directions](#)



Madeira Tower,
The Residence,
Ponton Road, SW8
Approximate Gross Internal Area
50.00 sq m / 538 sq ft

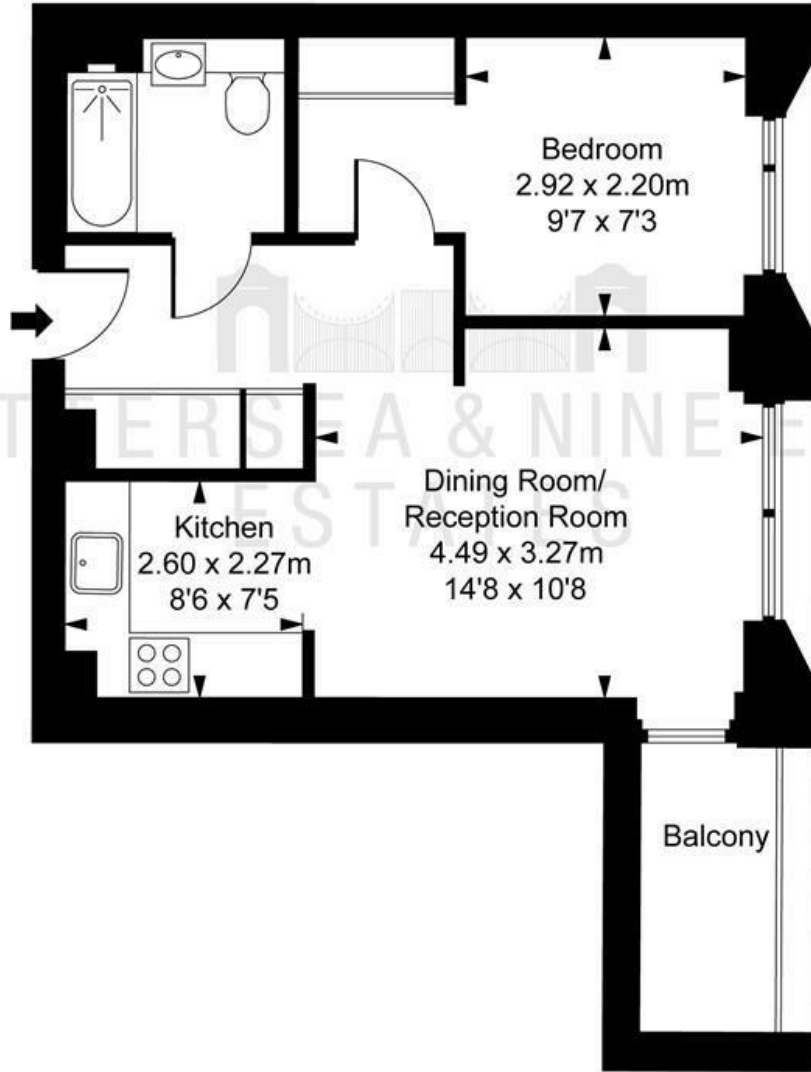


ILLUSTRATION FOR IDENTIFICATION PURPOSES ONLY
ALL MEASUREMENTS ARE MAXIMUM, AND INCLUDE WINDOW BAYS AND WARDROBES WHERE APPLICABLE
THIS PLAN MUST NOT BE REPRODUCED BY ANY OTHER PERSON WITHOUT PERMISSION

These particulars, whilst believed to be accurate are set out as a general outline only for guidance and do not constitute any part of an offer or contract. Intending purchasers should not rely on them as statements of representation of fact, but must satisfy themselves by inspection or otherwise as to their accuracy. No person in this firm's employment has the authority to make or give any representation or warranty in respect of the property.

| Energy Efficiency Rating | | Environmental Impact (CO ₂) Rating | |
|--------------------------|-----------|--|-----------|
| Current | Potential | Current | Potential |
| 87 | 87 | 94 | 94 |