

1 Lanchester Way London

This bedroom apartment is available to rent in the luxury development Lexington Gardens. Fully furnished, this contemporary designed property features high specification appliances such as a Siemens dishwasher, combination washer / dryer in addition to underfloor heating.

Residents will benefit from the 24 hour concierge service, a residents gym and media lounge. Transport links from Vauxhall Station and the Northern Line Extension from Nine Elms Station afford easy access to the city.

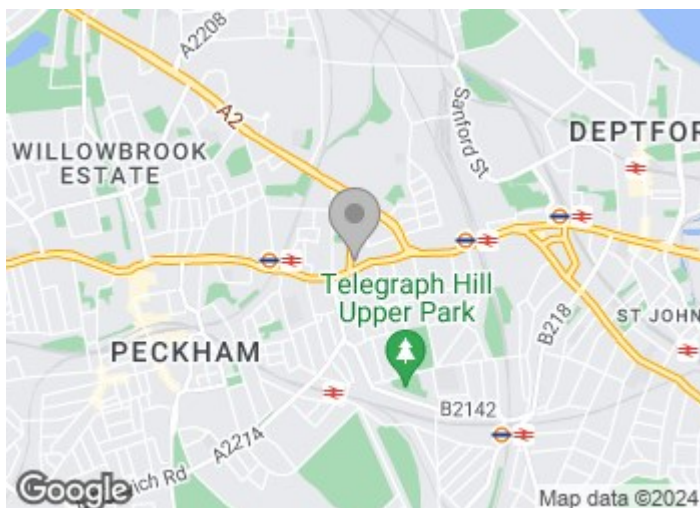
Council Tax Band: Wandsworth - E
Minimum contract: 12 months

£645 Per Week

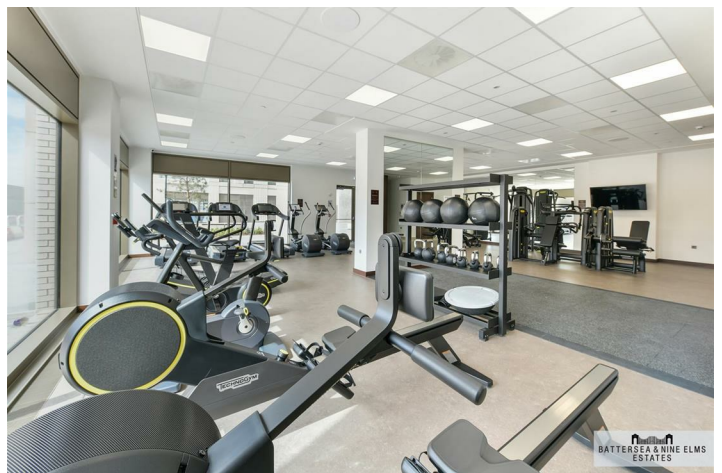
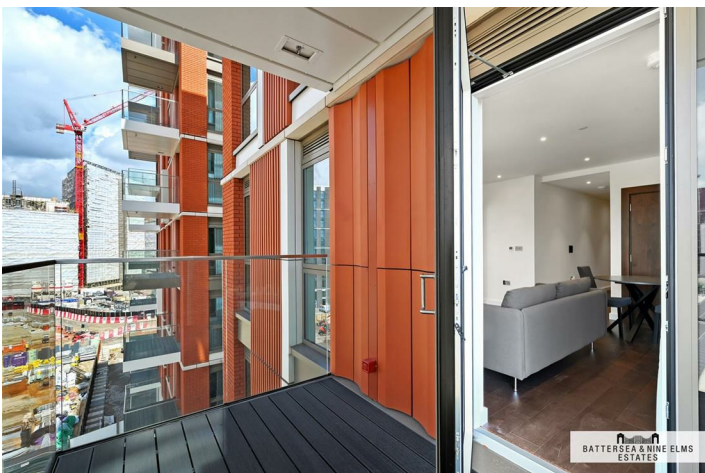
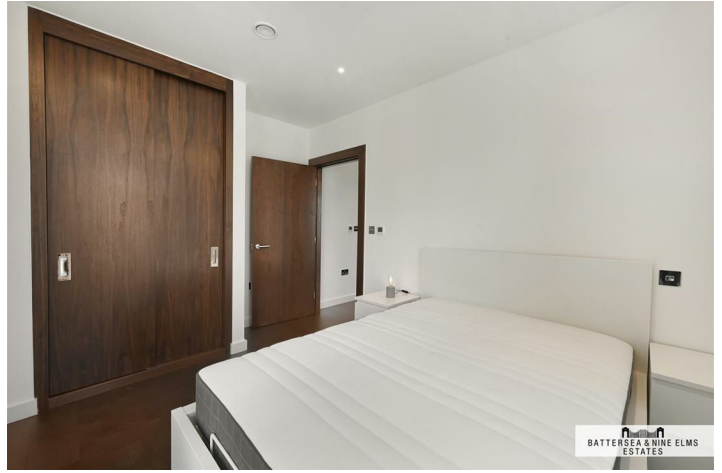
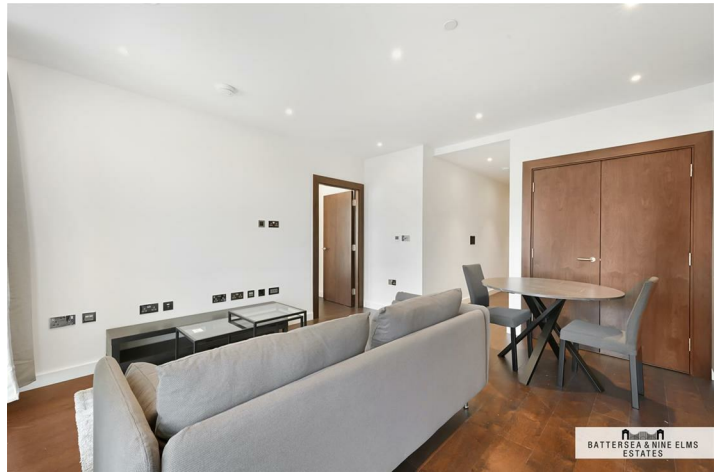
1 Lanchester Way London



- Fully furnished
- Zone 1 transport links
- 24 Hour concierge
- Residents gym



[Directions](#)



Kennedy Building

Approximate Gross Internal Area
42.4 sq m / 456 sq ft

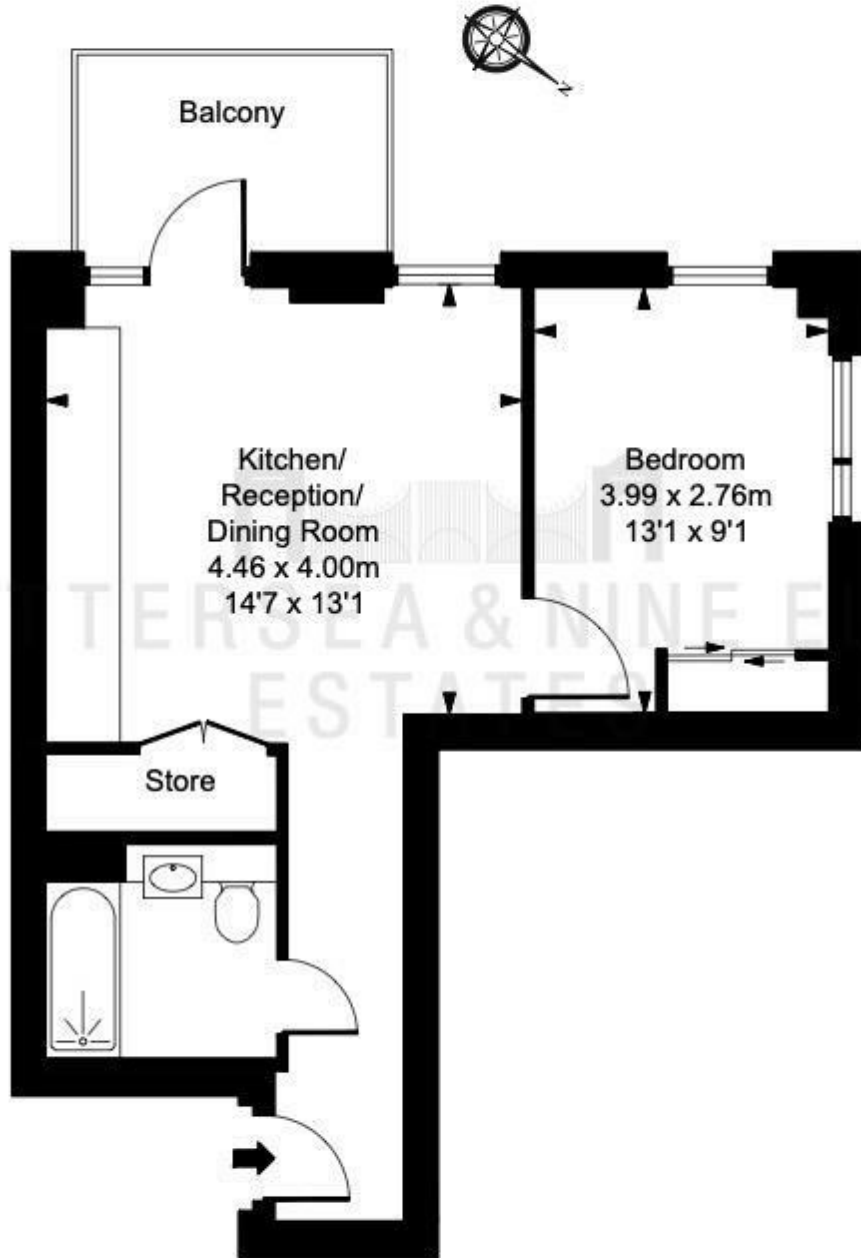


ILLUSTRATION FOR IDENTIFICATION PURPOSES ONLY
ALL MEASUREMENTS AND AREA FIGURES SUPPLIED BY OTHERS, ACCURACY IS NOT GUARANTEED.
THIS PLAN MUST NOT BE REPRODUCED BY ANY OTHER PERSON WITHOUT PERMISSION

These particulars, whilst believed to be accurate are set out as a general outline only for guidance and do not constitute any part of an offer or contract. Intending purchasers should not rely on them as statements of representation of fact, but must satisfy themselves by inspection or otherwise as to their accuracy. No person in this firm's employment has the authority to make or give any representation or warranty in respect of the property.

