

1 Viaduct Gardens London

A luxury two bedroom, two bathroom apartment situated in the sought after Embassy Gardens Development,.

Conveniently located to benefit from transports links from Vauxhall Station and Nine Elms Tube Station, residents will also be able to take advantage of the outstanding communal facilities including the wonderful Sky Pool, Sky Deck and Orangery restaurant as well as the gym, spa and private cinema.

Council Tax Band: Wandsworth - F
Minimum contract: 12 months
Change of contract fee: £50 including VAT
Lift access | Cladding: EWS1 Certificate available
Holding Deposit - £875 (1 weeks rent, subject to agreed offer)

Electricity supply – Mains | Cold Water supply – Mains | Sewerage – Mains | Hot water, heating & comfort cooling – Mains | Internet: Fibre | Parking available by separate negotiation |

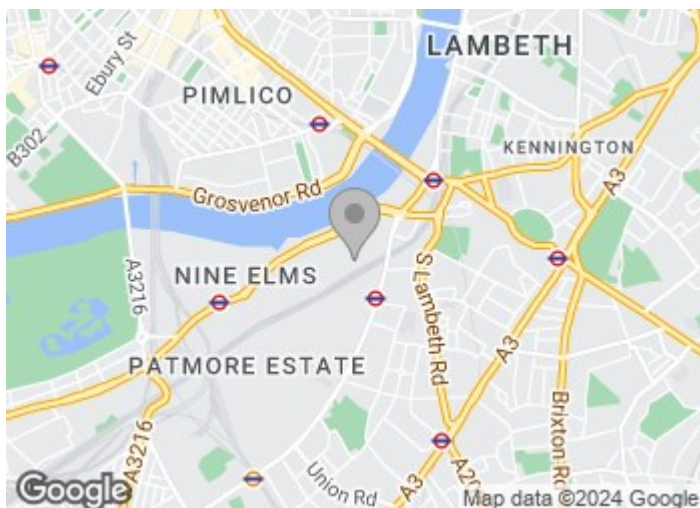
To check broadband and mobile phone coverage please visit Ofcom.
To check planning permission please visit Wandsworth Council Website, Planning & Building Control

£875 Per Week

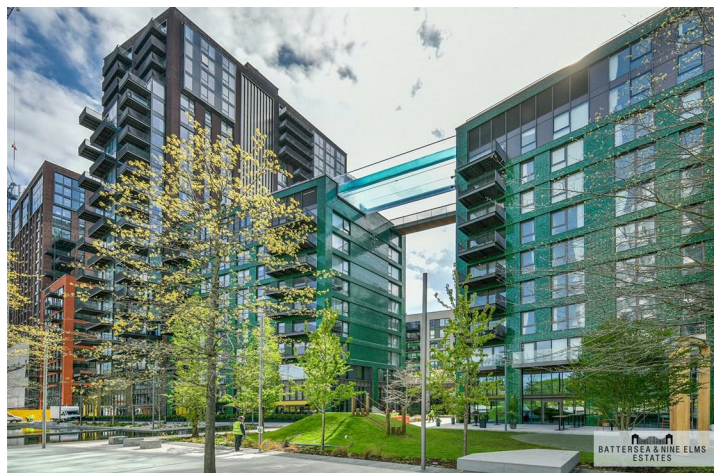
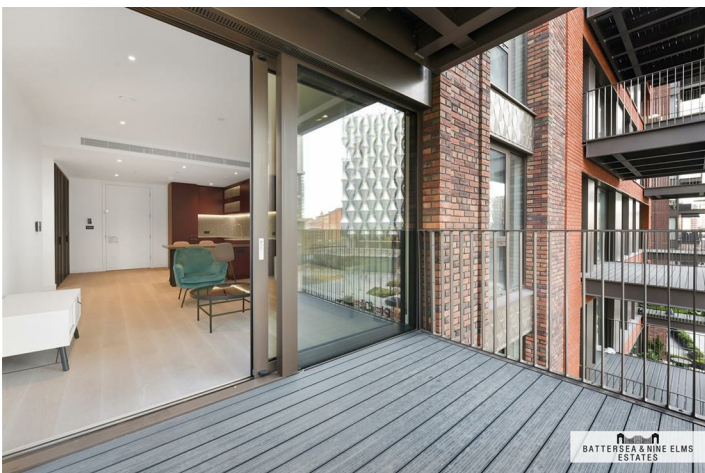
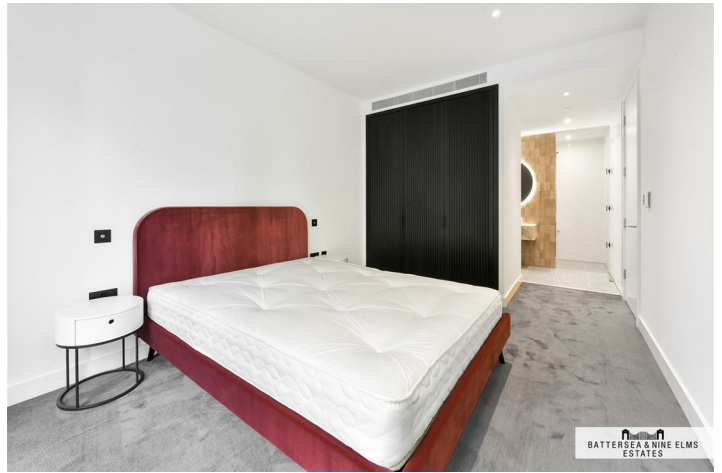
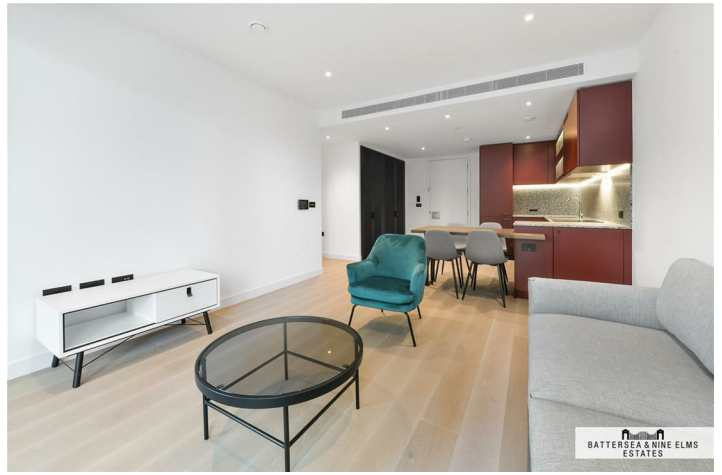
1 Viaduct Gardens London



- Two bedrooms
- Two bathrooms (one ensuite)
- Underfloor heating & comfort cooling
- 24 Hour concierge



[Directions](#)



The Modern, Embassy Gardens, SW11

Approximate Gross Internal Area
73.90 sq m / 795 sq ft

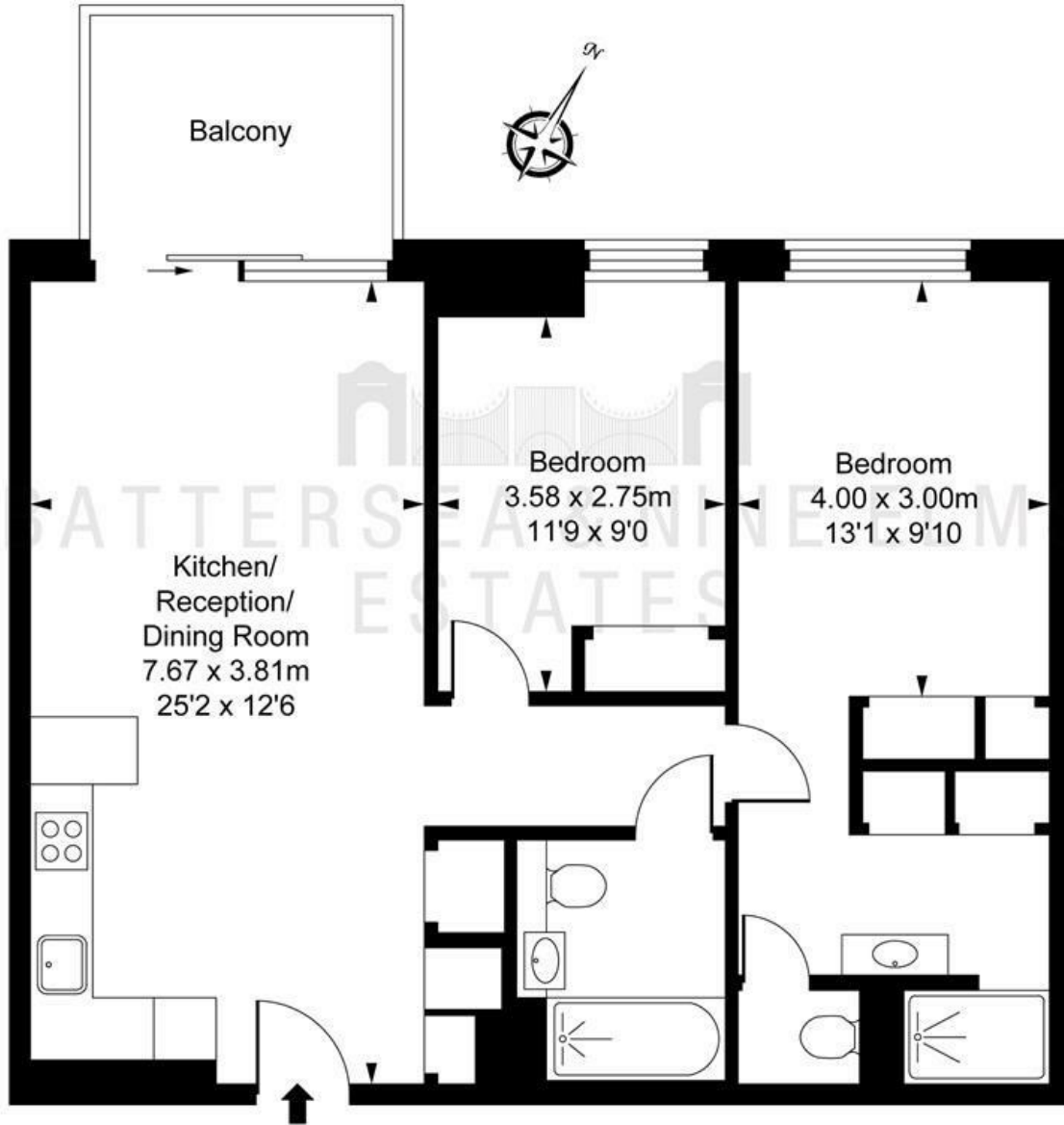


ILLUSTRATION FOR IDENTIFICATION PURPOSES ONLY
ALL MEASUREMENTS AND AREA FIGURES SUPPLIED BY OTHERS. ACCURACY IS NOT GUARANTEED.
THIS PLAN MUST NOT BE REPRODUCED BY ANY OTHER PERSON WITHOUT PERMISSION

These particulars, whilst believed to be accurate are set out as a general outline only for guidance and do not constitute any part of an offer or contract. Intending purchasers should not rely on them as statements of representation of fact, but must satisfy themselves by inspection or otherwise as to their accuracy. No person in this firm's employment has the authority to make or give any representation or warranty in respect of the property.

