

10 Charles Clowes Walk, London

Asking Price £615,000

A beautiful one bedroom apartment with private balcony situated in The Residence development. The space features contemporary design throughout including quality appliances and spa like bathroom fittings.

Residents can enjoy the stunning communal amenities including an on site gym and 24 hour concierge service. The apartment is ideally located within the newly regenerated Nine Elms area with beneficial links to transport including Battersea, Vauxhall and Nine Elms stations.

Approximately 990 years remaining on lease
Ground rent amount: Ask agent
Ground rent review period: Ask agent
Service charge amount: approx. Ask agent
Service charge review period: N/A
Council tax band: E (Wandsworth)

Electricity supply – Mains | Heating – Communal | Water supply – Mains | Sewerage – Mains | Internet: FTTP
| Lift Access | Parking No | Cladding: EWS1 Certificate available

To check broadband and mobile phone coverage please visit Ofcom
To check planning permission please visit Wandsworth Council Website. Planning & Building Control

10 Charles Clowes Walk London



1



1

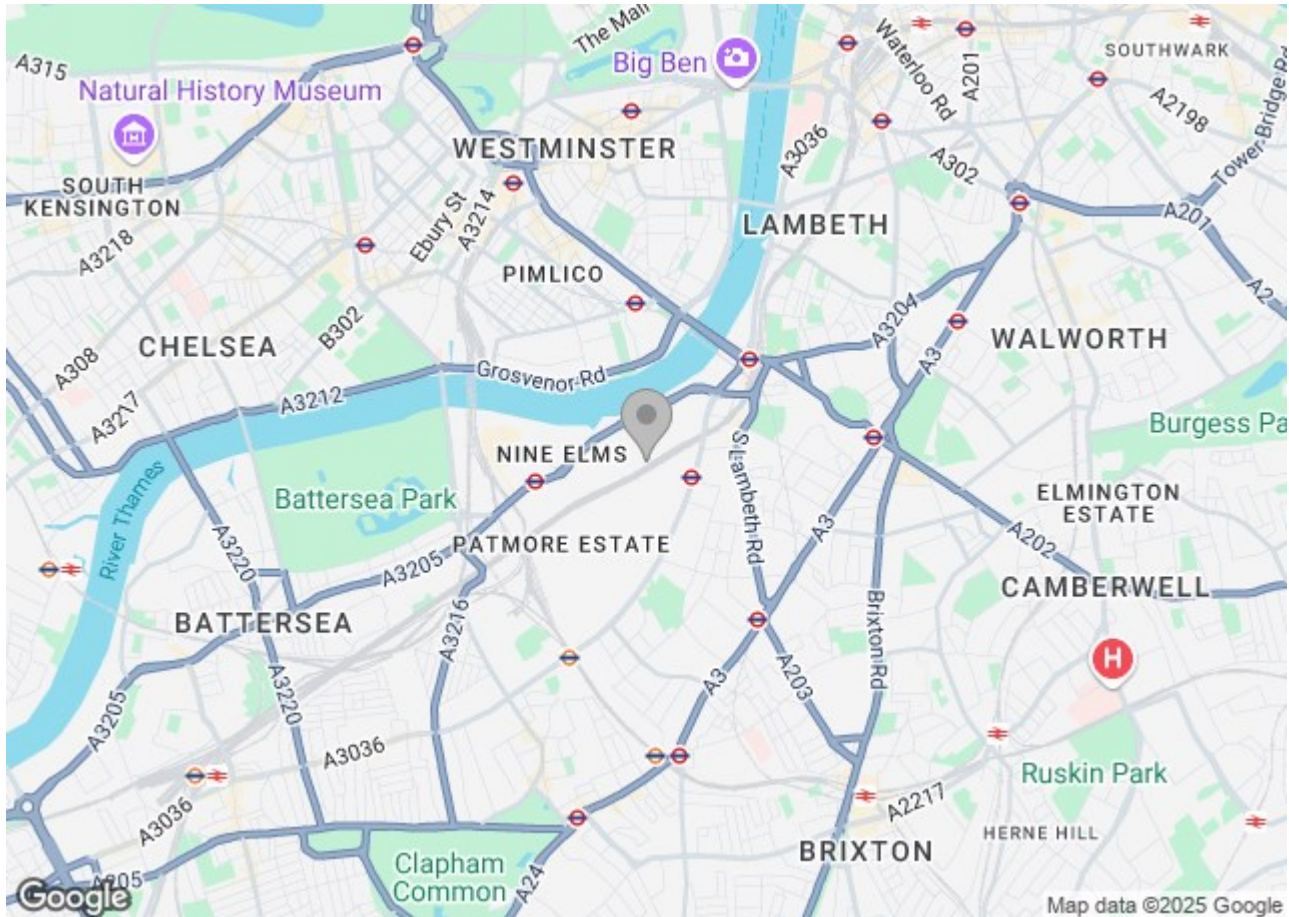


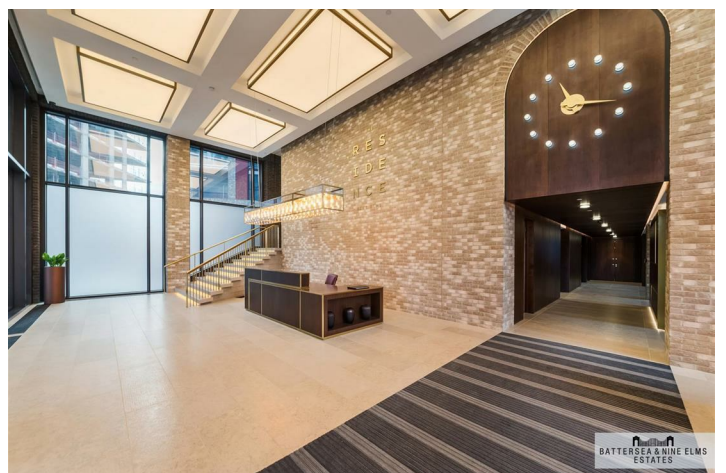
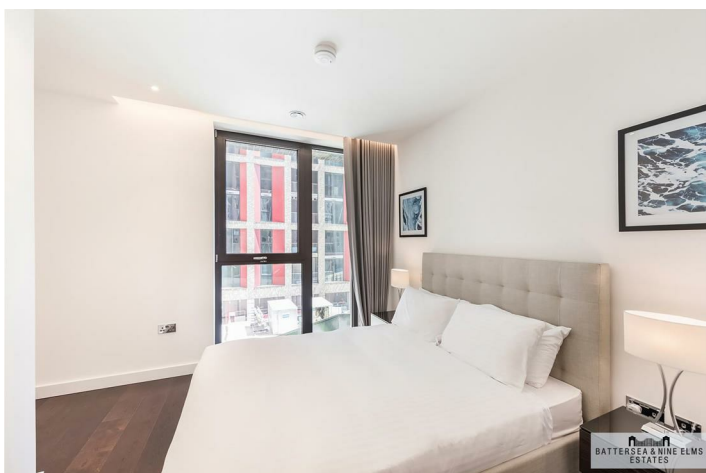
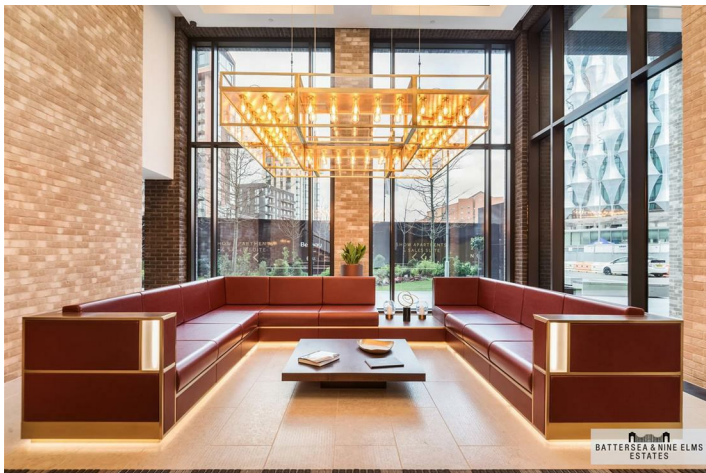
1



B

- Dishwasher & combination washer /dryer
- Residents gym
- 24 Hour concierge
- Underfloor heating
- Private screening room & meeting room
- Communal garden
- Balcony
- Zone 1 transport links





Haines House,
Charles Clowes Walk, SW11
Approximate Gross Internal Area
52.5 sq m / 565 sq ft

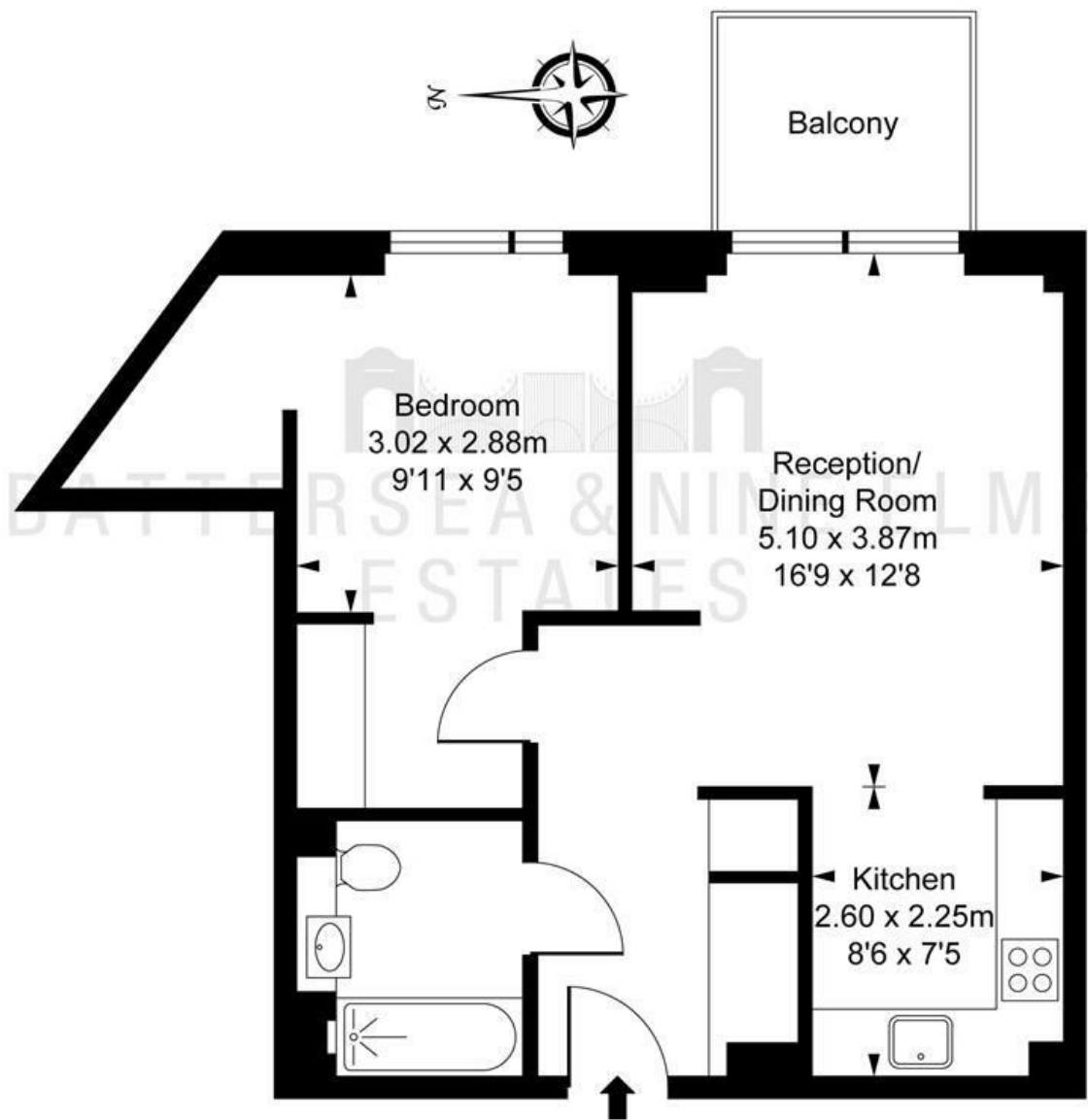


ILLUSTRATION FOR IDENTIFICATION PURPOSES ONLY
ALL MEASUREMENTS AND AREA FIGURES SUPPLIED BY OTHERS, ACCURACY IS NOT GUARANTEED.
THIS PLAN MUST NOT BE REPRODUCED BY ANY OTHER PERSON WITHOUT PERMISSION

These particulars, whilst believed to be accurate are set out as a general outline only for guidance and do not constitute any part of an offer or contract. Intending purchasers should not rely on them as statements of representation of fact, but must satisfy themselves by inspection or otherwise as to their accuracy. No person in this firm's employment has the authority to make or give any representation or warranty in respect of the property.

