

## 88 Great Eastern Road London





Situated in close proximity to Stratford Underground Station, this stunning property features luxury design and finish. Comprising of two double bedroom, bathroom and an open plan kitchen / reception room, this apartment is well appointed and offers plenty of built in storage.

Located close to the shops and bars of Stratford with excellent transport links including Stratford Station underground. Residents can enjoy spectacular views of Canary Wharf. Residents will also enjoy the wonderful on site amenities including the gymnasium and 24 hour concierge.

Minimum contract: 12 months  
Change of contract fee: £50 including VAT  
Newham Council: Band D

**£669 Per Week**

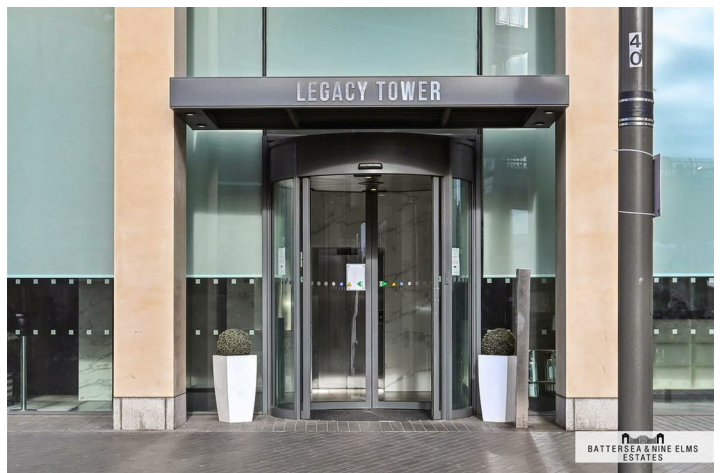
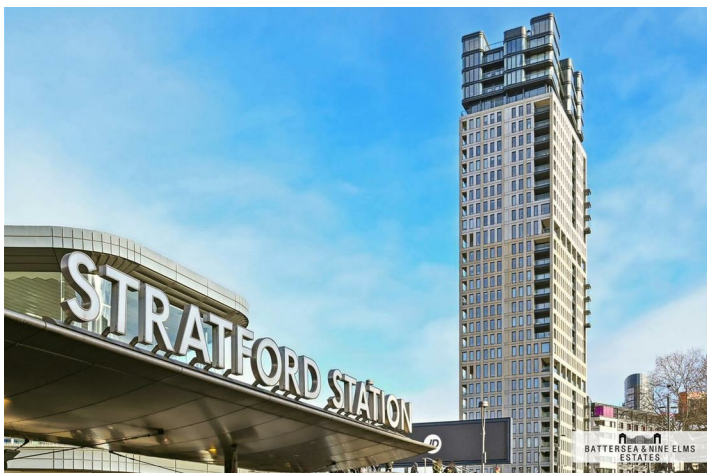
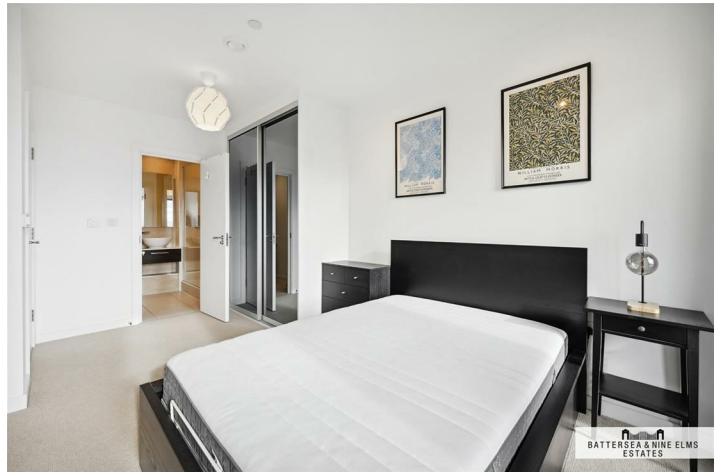
# 88 Great Eastern Road London

 2    2    1    B

- Two Bedroom
- Residential Gymnasium
- Two Bathroom
- Views of Canary Wharf
- 24 Hour Concierge
- Excellent Transport Links



[Directions](#)



Legacy Tower,  
Great Eastern Road, E15  
Approximate Gross Internal Area  
84.10 sq m / 905 sq ft

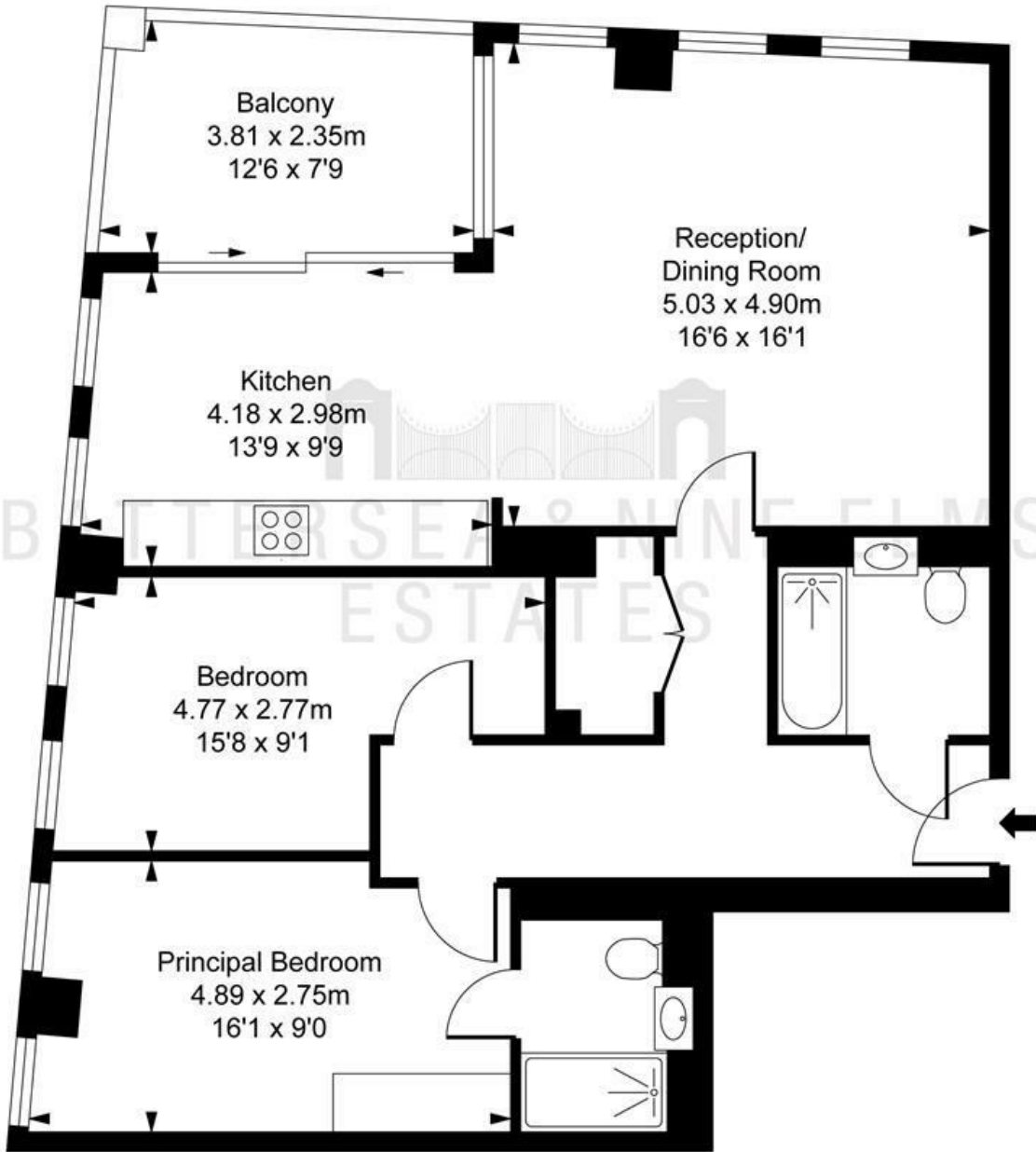


ILLUSTRATION FOR IDENTIFICATION PURPOSES ONLY  
ALL MEASUREMENTS AND AREA FIGURES SUPPLIED BY OTHERS, ACCURACY IS NOT GUARANTEED.  
THIS PLAN MUST NOT BE REPRODUCED BY ANY OTHER PERSON WITHOUT PERMISSION

These particulars, whilst believed to be accurate are set out as a general outline only for guidance and do not constitute any part of an offer or contract. Intending purchasers should not rely on them as statements of representation of fact, but must satisfy themselves by inspection or otherwise as to their accuracy. No person in this firm's employment has the authority to make or give any representation or warranty in respect of the property.

Energy Efficiency Rating		Environmental Impact (CO <sub>2</sub> ) Rating	
Current	Potential	Current	Potential
86	86		