



## 27 Albert Embankment London

Set in the exclusive Dumont development this one bedroom, one bathroom property boasts stunning views of the River Thames and the city of London. Finished to the highest standard, the property includes luxury features such as a fully integrated kitchen with Miele appliances and branded sanitary ware, in addition to underfloor heating in the bathrooms. Floor to ceiling windows throughout create a light and bright space.

Residents will benefit from the wonderful communal facilities including gym and swimming pool, private members bar, roof terrace, private cinema and ten pin bowling alley. Excellently located the development sits close to Vauxhall station and other zone one transport links.

Approximately 988 years remaining on lease

Ground rent amount: Ask agent

Ground rent review period: Ask agent

Service charge amount: approx. Ask agent

Service charge review period: N/A

Council tax band: G (Lambeth Council)

**Asking Price £850,000**

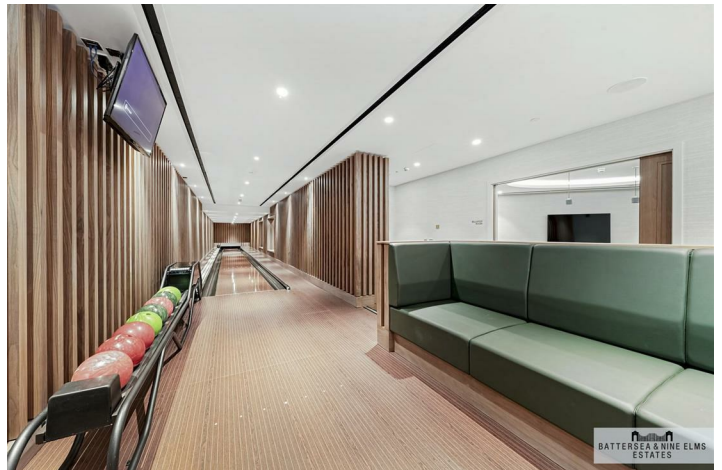
## 27 Albert Embankment London



- One bedroom
- One bathroom
- River view
- Swimming pool & gym
- Private cinema
- 24 hour concierge
- Excellent location







The Dumont,  
 Albert Embankment, SE1  
 Approximate Gross Internal Area  
 63.75 sq m / 686 sq ft

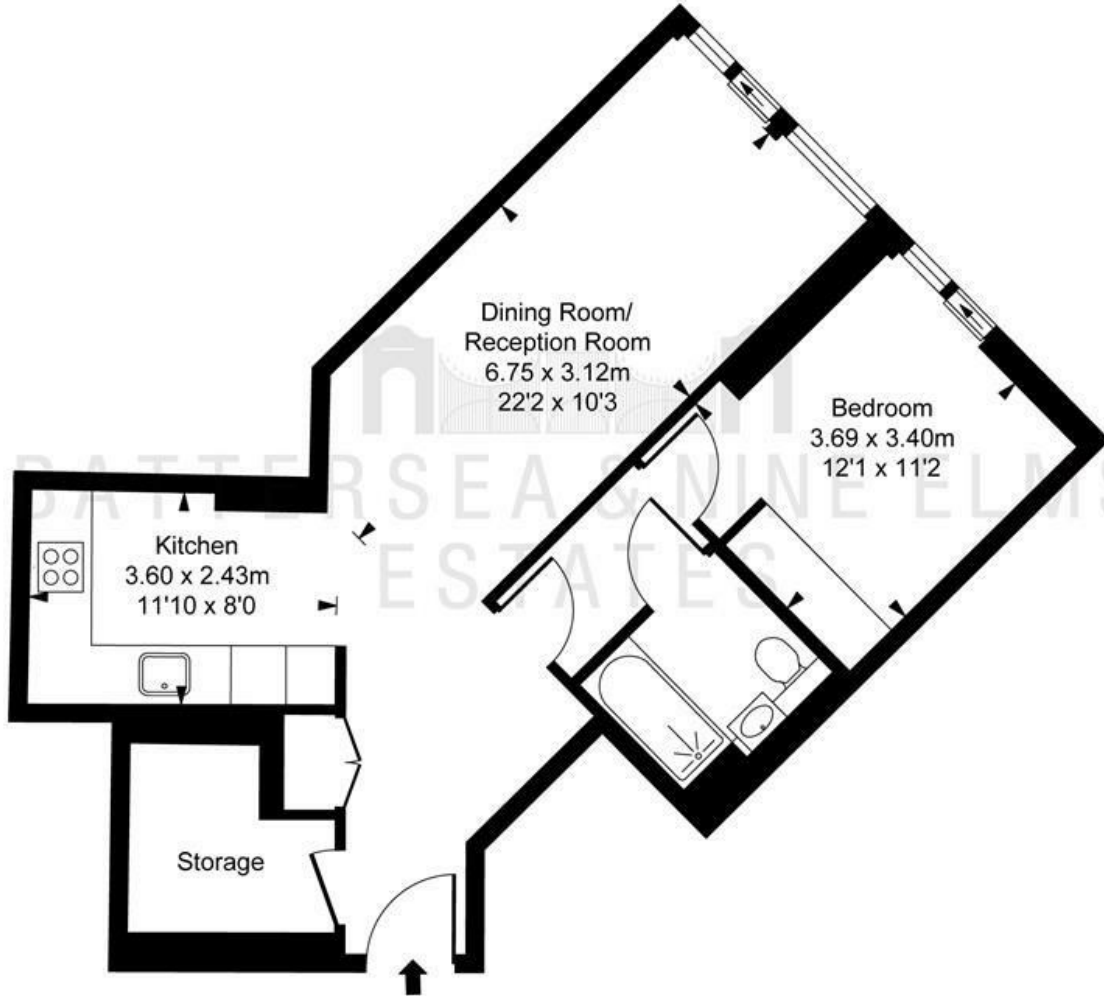


ILLUSTRATION FOR IDENTIFICATION PURPOSES ONLY  
 ALL MEASUREMENTS AND AREA FIGURES SUPPLIED BY OTHERS, ACCURACY IS NOT GUARANTEED.  
 THIS PLAN MUST NOT BE REPRODUCED BY ANY OTHER PERSON WITHOUT PERMISSION

These particulars, whilst believed to be accurate are set out as a general outline only for guidance and do not constitute any part of an offer or contract. Intending purchasers should not rely on them as statements of representation of fact, but must satisfy themselves by inspection or otherwise as to their accuracy. No person in this firm's employment has the authority to make or give any representation or warranty in respect of the property.

