

27 Albert Embankment London

This stunning, one bedroom apartment is set within the exclusive Dumont development. Combining an open plan kitchen and living area with partial river views; the apartment benefits from luxurious touches such as fully integrated Miele kitchen appliances, branded sanitary ware in the luxury bathroom, underfloor heating as well as additional storage space.

Centrally located the property is close to Vauxhall station and other zone one transport links. Residents will also benefit from the luxurious communal facilities including, ten pin bowling alley, swimming pool, gym and roof top terrace bar with basting spectacular views across the city of London.

Approximately 988 years remaining on lease

Ground rent amount: Ask agent

Ground rent review period: Ask agent

Service charge amount: approx. Ask agent

Service charge review period: N/A

Council tax band: G (Lambeth Council)

Asking Price £800,000

28 Ponton Road, London, SW11 7BA

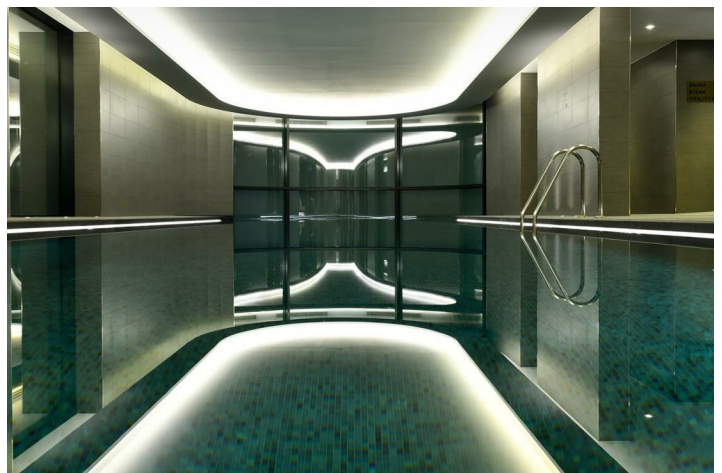
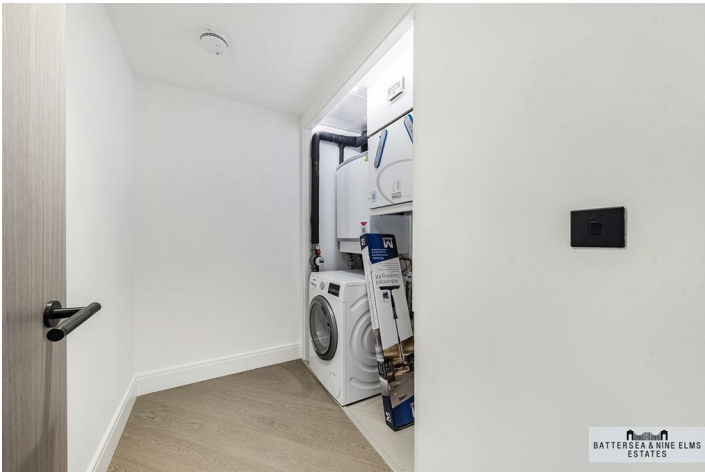
www.battersea9elms.co.uk

27 Albert Embankment London



- One bedroom
- 24 hour concierge
- Roof top terrace bar
- One bathroom
- Gym and swimming pool
- Private cinema
- Partial river views
- Ten pin bowling alley
- Excellent location





The Dumont,
 Albert Embankment, SE1
 Approximate Gross Internal Area
 63.75 sq m / 686 sq ft

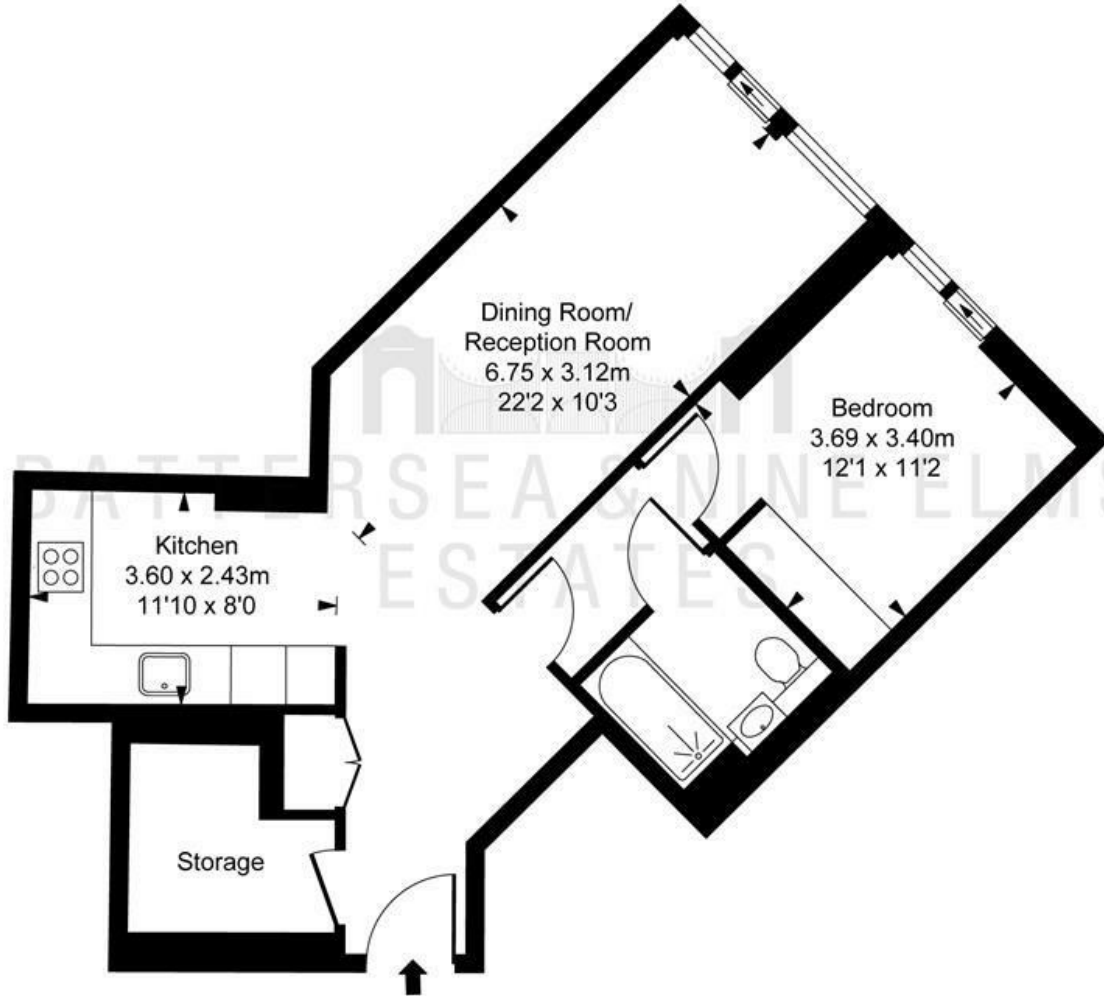


ILLUSTRATION FOR IDENTIFICATION PURPOSES ONLY
 ALL MEASUREMENTS AND AREA FIGURES SUPPLIED BY OTHERS, ACCURACY IS NOT GUARANTEED.
 THIS PLAN MUST NOT BE REPRODUCED BY ANY OTHER PERSON WITHOUT PERMISSION

These particulars, whilst believed to be accurate are set out as a general outline only for guidance and do not constitute any part of an offer or contract. Intending purchasers should not rely on them as statements of representation of fact, but must satisfy themselves by inspection or otherwise as to their accuracy. No person in this firm's employment has the authority to make or give any representation or warranty in respect of the property.

