

TWO BEDROOMS

TWO BATHROOMS

10TH FLOOR

BALCONY

DUAL ASPECT

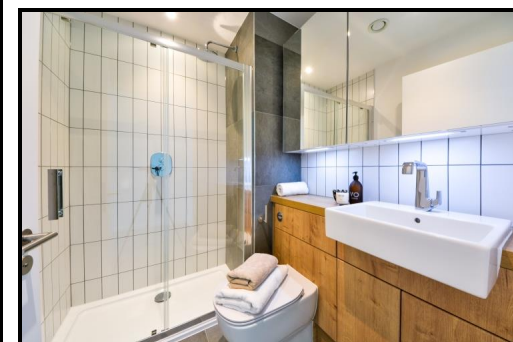
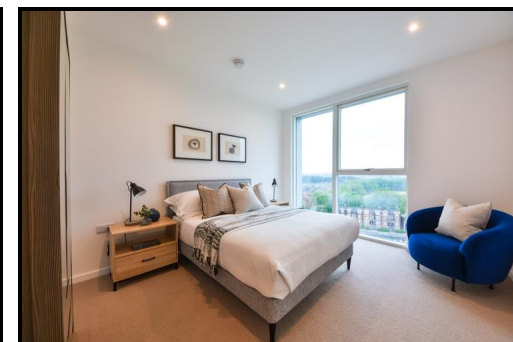
Brand new two bedroom, two bathroom 10th floor apartment with a balcony in Deptford Landings SE8. Comprising a spacious open plan kitchen/ living area with floor to ceiling windows leading to private balcony, two ample sized bedrooms, master en-suite with shower and a further, modern family bathroom. Cycle storage, landscaped gardens. Walking to Deptford Rail and Surrey Quays Station.

£767,500 (Leasehold)



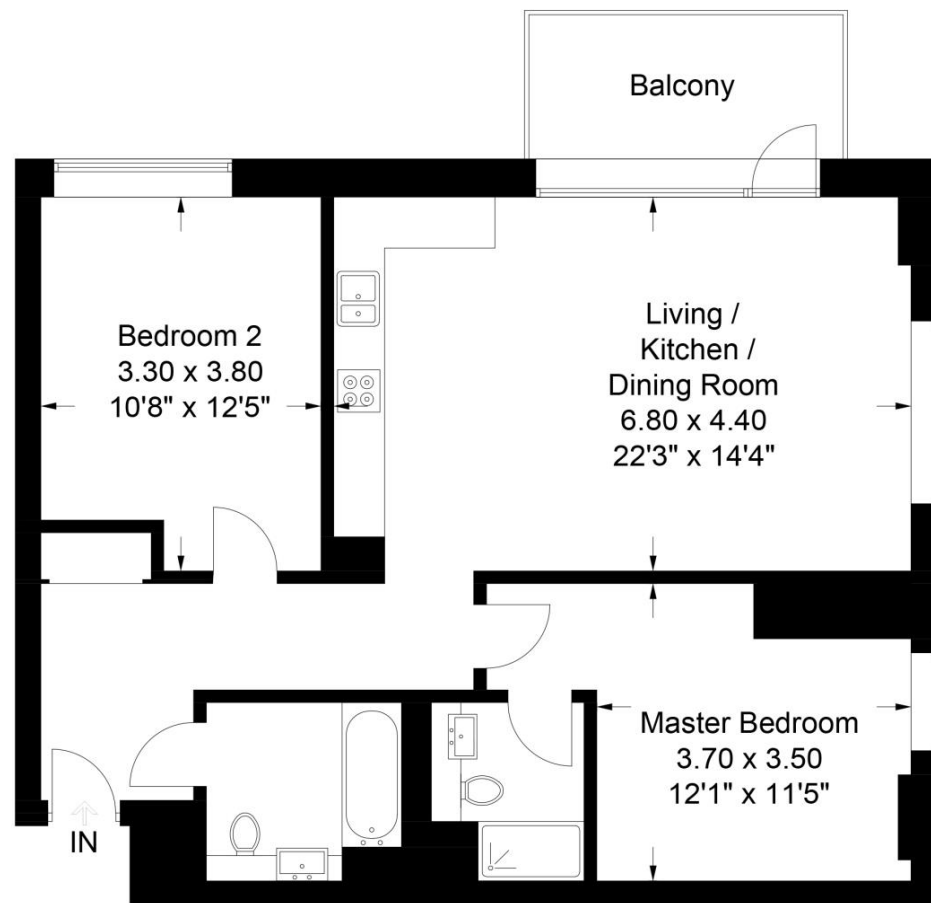
KINGWOOD APARTMENTS, DEPTFORD LANDINGS, DEPTFORD SE8

£767,500 (Leasehold)



Deptford Landings, SE8

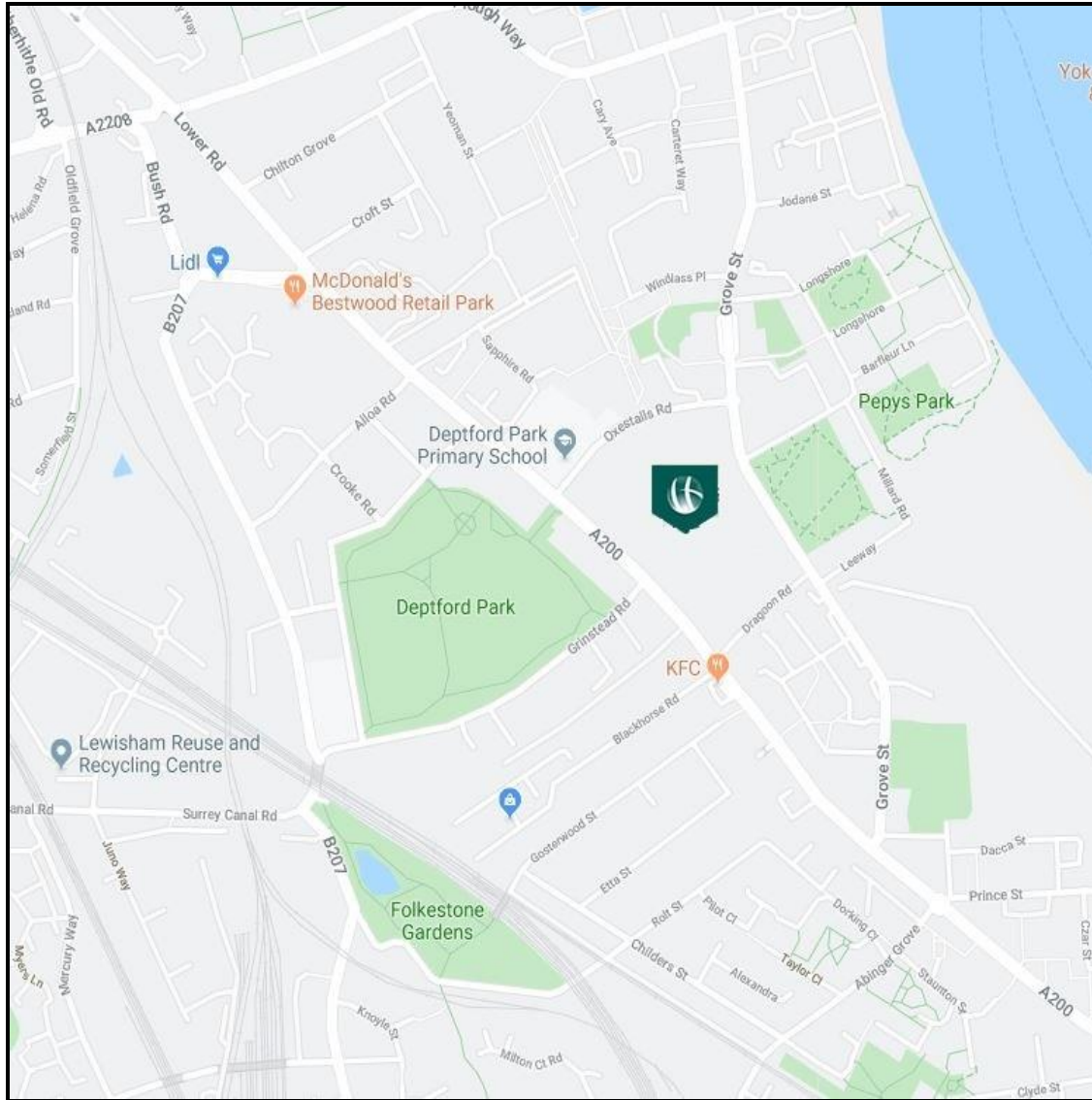
Approximate Gross Internal Area = 77.1 sq m / 829 sq ft



Chase Evans makes every attempt to ensure accuracy, however all measurements are approximate. All aspects of this floor plan are for illustrative purposes only and not to scale. Errors and omissions excepted (E&OE).

KINGWOOD APARTMENTS, DEPTFORD LANDINGS, DEPTFORD SE8

£767,500 (Leasehold)



Energy Efficiency Rating		Environmental Impact Rating			
	Current	Potential		Current	Potential
Very energy efficient - lower running costs			Very environmentally friendly - lower CO ₂ emissions		
(92-100) A			(82-100) A	94	94
(81-91) B	86	86	(81-91) B		
(69-80) C			(69-80) C		
(55-68) D			(55-68) D		
(39-54) E			(39-54) E		
(21-38) F			(21-38) F		
(1-20) G			(1-20) G		
Not energy efficient - higher running costs			Not environmentally friendly - higher CO ₂ emissions		
England & Wales	EU Directive 2002/91/EC		England & Wales	EU Directive 2002/91/EC	

The energy efficiency rating is a measure of the overall efficiency of a home. The higher the rating the more energy efficient the home is and the lower the fuel bills will be.

The environmental impact rating is a measure of a home's impact on the environment in terms of carbon dioxide (CO₂) emissions. The higher the rating the less impact it has on the environment.

[View Property](#)

Contact Information:

City Office

122 Whitechapel High Street, London, E1 7PT

Tel: +44 (0)20 7247 3888

Email: city@chaseevans.co.uk