

TWO BEDROOM

NINTH FLOOR

PRIVATE BALCONY

UNDERFLOOR HEATING

SECURE CYCLE STORAGE

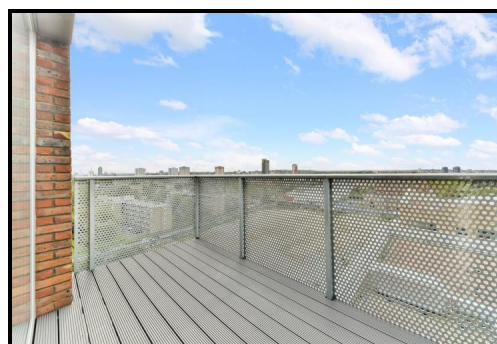
Ninth floor two bed, two bath apartment in Meranti Apartments – Deptford Landings SE8. Comprising an elegant fitted kitchen, integrated appliances and an inviting living area with full height, south-west facing windows leading to a spacious private balcony. Two double bedrooms, each with fitted wardrobe space, master ensuite shower room and a contemporary bathroom suite.

£575,000 (Leasehold)



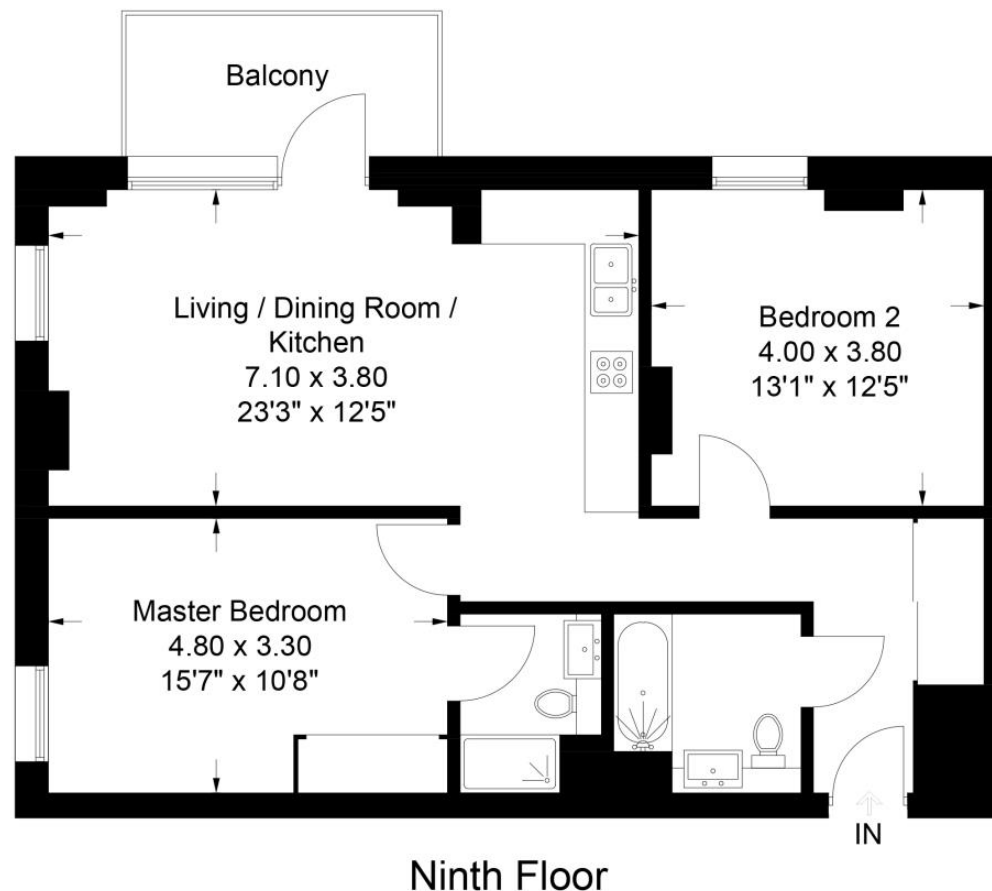
MERANTI APARTMENTS, DEPTFORD LANDINGS, DEPTFORD SE8

£575,000 (Leasehold)



The Timberyard, SE8

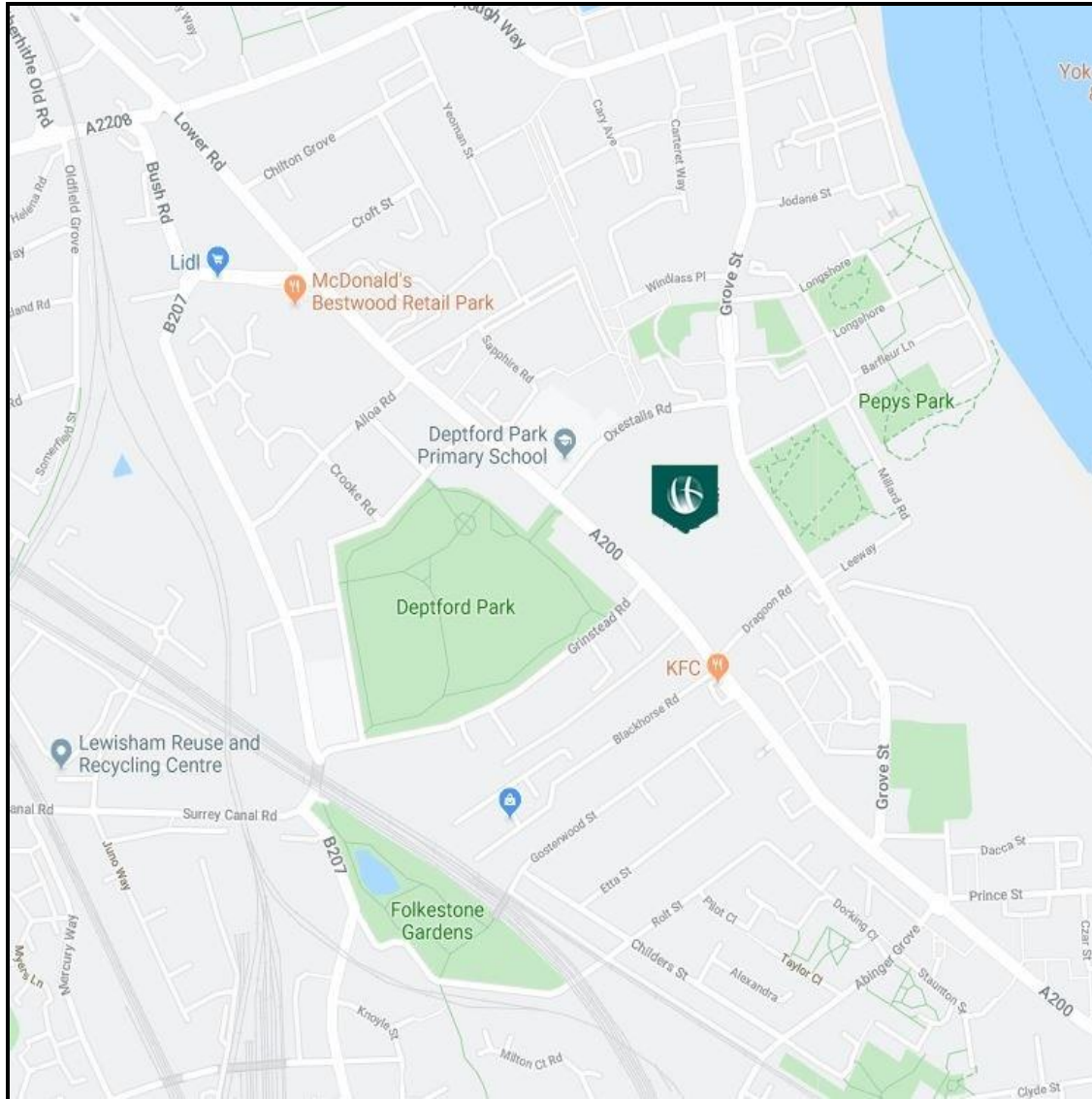
Approximate Gross Internal Area = 76.7 sq m / 825 sq ft



Chase Evans makes every attempt to ensure accuracy, however all measurements are approximate.
All aspects of this floor plan are for illustrative purposes only and not to scale. Errors and omissions excepted (E&OE).

MERANTI APARTMENTS, DEPTFORD LANDINGS, DEPTFORD SE8

£575,000 (Leasehold)



Energy Efficiency Rating		Environmental Impact Rating	
	Current	Potential	
Very energy efficient - lower running costs			Very environmentally friendly - lower CO ₂ emissions
(92-100) A			(92-100) A
(81-91) B	85	85	(81-91) B
(69-80) C			(69-80) C
(55-68) D			(55-68) D
(39-54) E			(39-54) E
(21-38) F			(21-38) F
(1-20) G			(1-20) G
Not energy efficient - higher running costs			Not environmentally friendly - higher CO ₂ emissions
England & Wales	EU Directive 2002/91/EC		England & Wales
			EU Directive 2002/91/EC

The energy efficiency rating is a measure of the overall efficiency of a home. The higher the rating the more energy efficient the home is and the lower the fuel bills will be.

The environmental impact rating is a measure of a home's impact on the environment in terms of carbon dioxide (CO₂) emissions. The higher the rating the less impact it has on the environment.

View Property

Contact Information:

Elephant and Castle Office

5 St Gabriel Walk, London, SE1 6FS

Tel: 020 3869 2888

Email: onetheelephant@chaseevans.co.uk