

THREE BEDROOMS

TWO BATHROOMS

FIRST FLOOR

SECURE PARKING

PRIVATE TERRACE

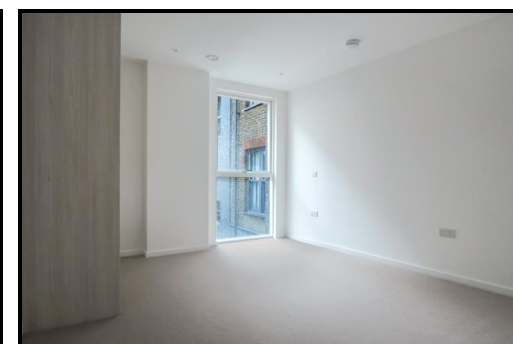
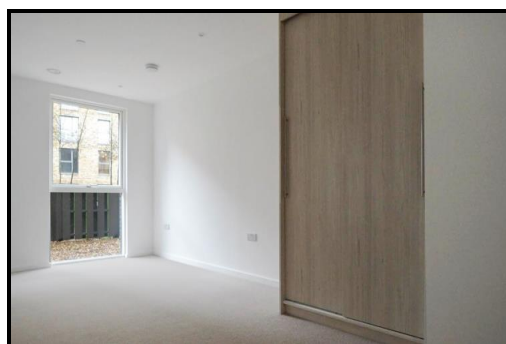
First floor three bed, two bath apartment with secure parking in Cedarwood Mansions, Deptford Landings, SE8. Comprising elegant fitted kitchen, integrated appliances and guest WC, an inviting living area with full height, south-west facing windows leading to a spacious 332sq.ft. terrace. Three double bedrooms, each with fitted wardrobe space, master with ensuite shower room.

£700,000 (Leasehold)



MERANTI APARTMENTS, DEPTFORD LANDINGS, DEPTFORD SE8

£700,000 (Leasehold)

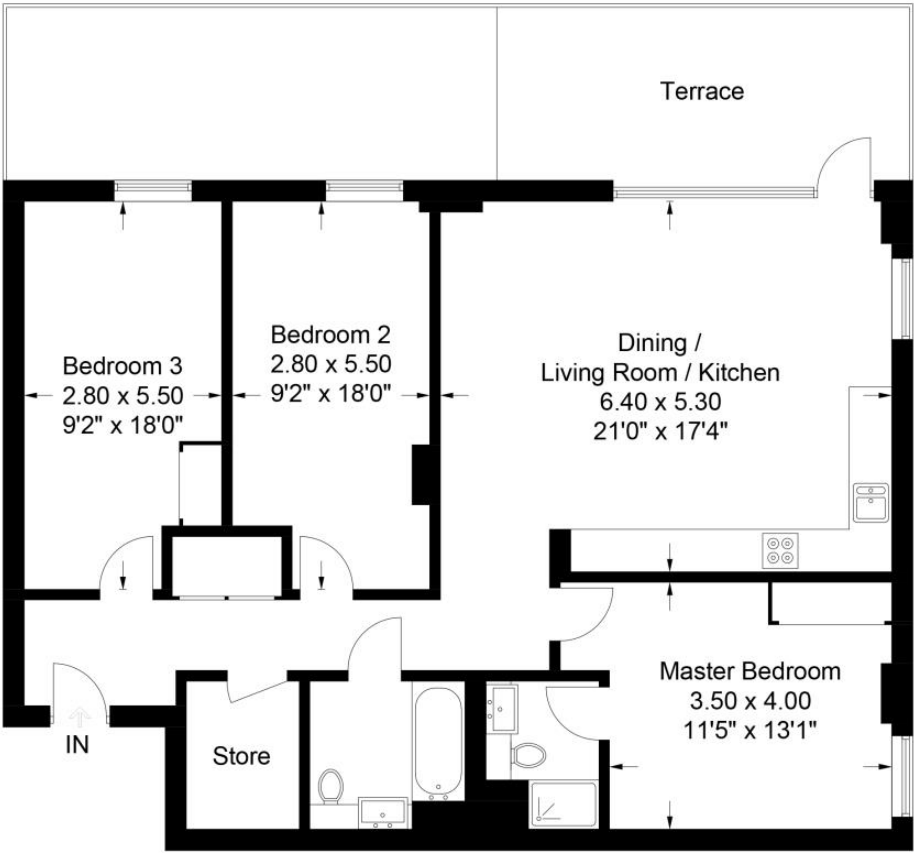


**MERANTI APARTMENTS, DEPTFORD LANDINGS,
DEPTFORD SE8**

£700,000 (Leasehold)

The Timberyard, SE8

Approximate Gross Internal Area = 102.0 sq m / 1098 sq ft



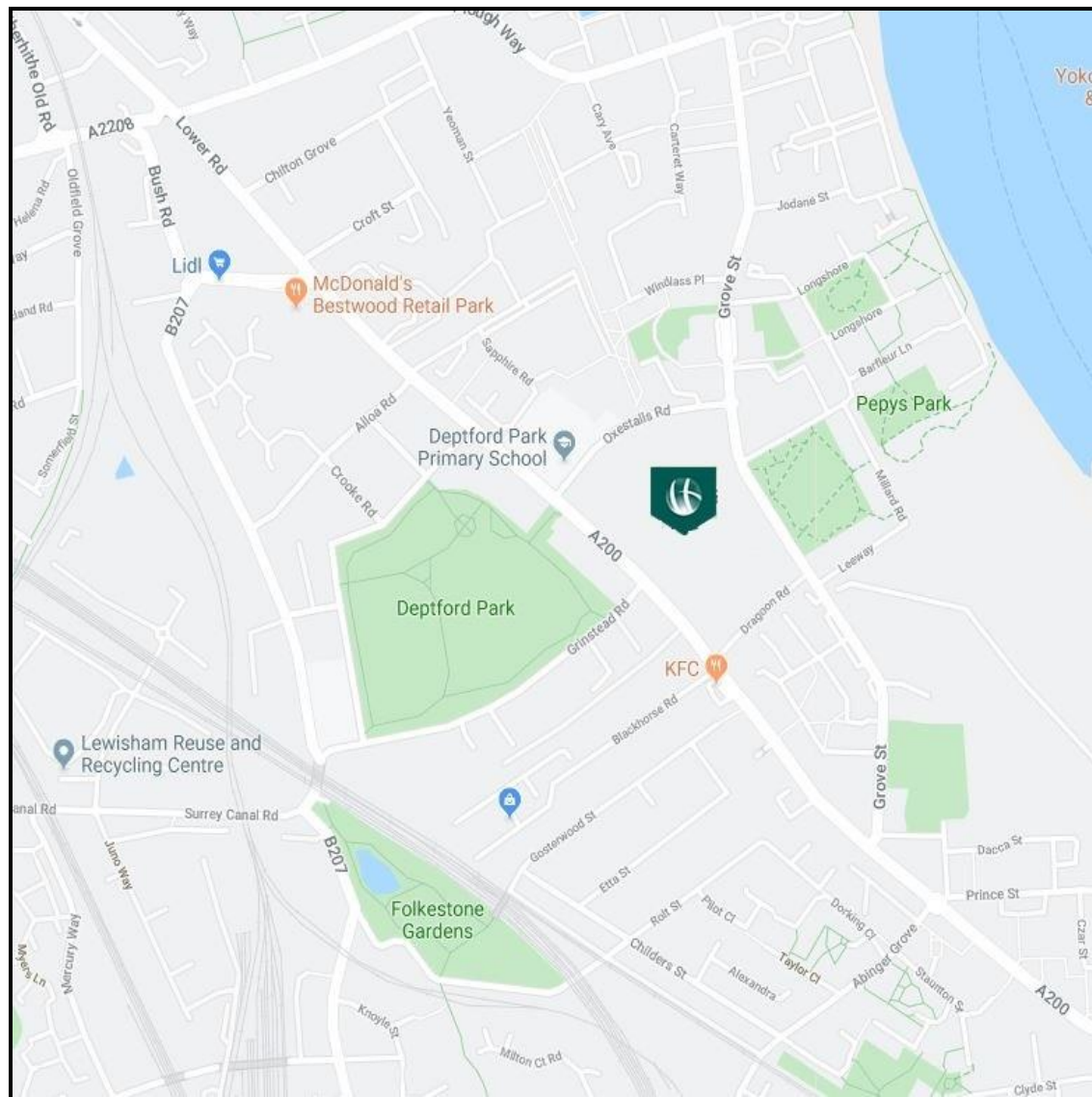
First Floor



Chase Evans makes every attempt to ensure accuracy, however all measurements are approximate. All aspects of this floor plan are for illustrative purposes only and not to scale. Errors and omissions excepted (E&OE).

MERANTI APARTMENTS, DEPTFORD LANDINGS, DEPTFORD SE8

£700,000 (Leasehold)



View Property

Contact Information:

Elephant and Castle Office

5 St Gabriel Walk, London, SE1 6FS

Tel: 020 3869 2888

Email: onetheelephant@chaseevans.co.uk