

## Norlem Court, Greenland Place, Pell Street, Deptford, SE8

Asking price **£585,000** | Leasehold



# Norlem Court, Greenland Place, Pell Street, Deptford, SE8



2 Bedrooms



2 Bathrooms



1 Reception



Balcony



Gymnasium



Local Amenities



24-Hour Concierge



0.4 MI Surrey Quays

Fantastic two bedroom property in Norlem Court, forming part of the Greenland Place development in Surrey Quays. This apartment benefits from a spacious open plan living room and dining area, fully integrated large kitchen, wooden flooring, floor to ceiling windows, high ceilings, generous bedrooms with fitted storage, master with en-suite, modern tiled bathroom with smart fittings and fixtures, private balcony providing communal views. Norlem Court is located within the peaceful Greenland Place development and offers residents everything you need within moments of your front door. Offers facilities such as 24-hour concierge and

residents on-site gym, local cafes and restaurants such as the popular Plough Way Café and The Pear Tree. Walking distance to Surrey Quays Overground, Deptford Park, and the River Thames.

**Tenure:** Leasehold (987 years remaining)

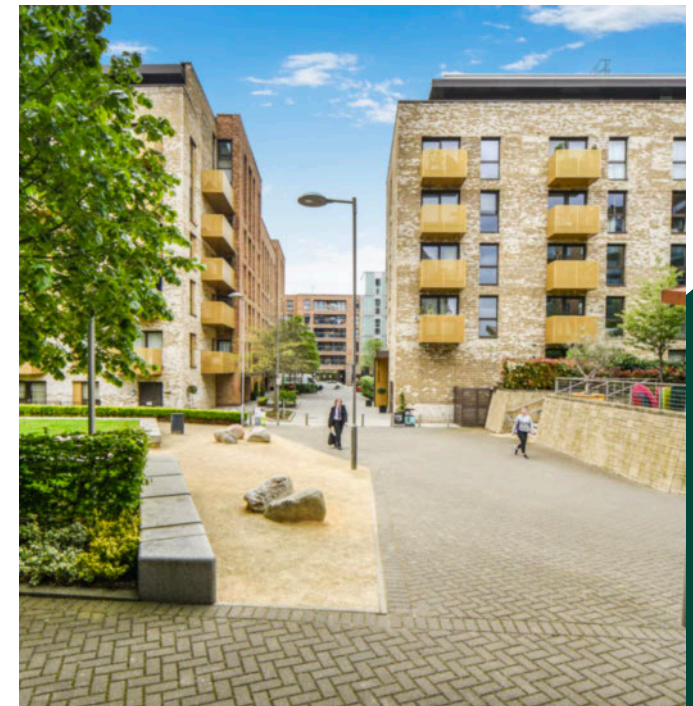
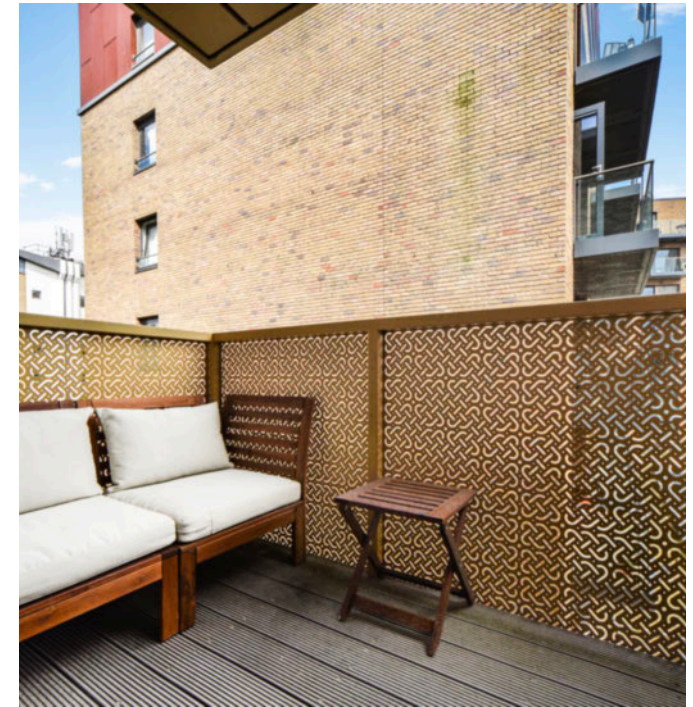
**Local Authority:** Lewisham London

**Ground Rent:** £510.62 p.a.

**Council Tax Band:** C

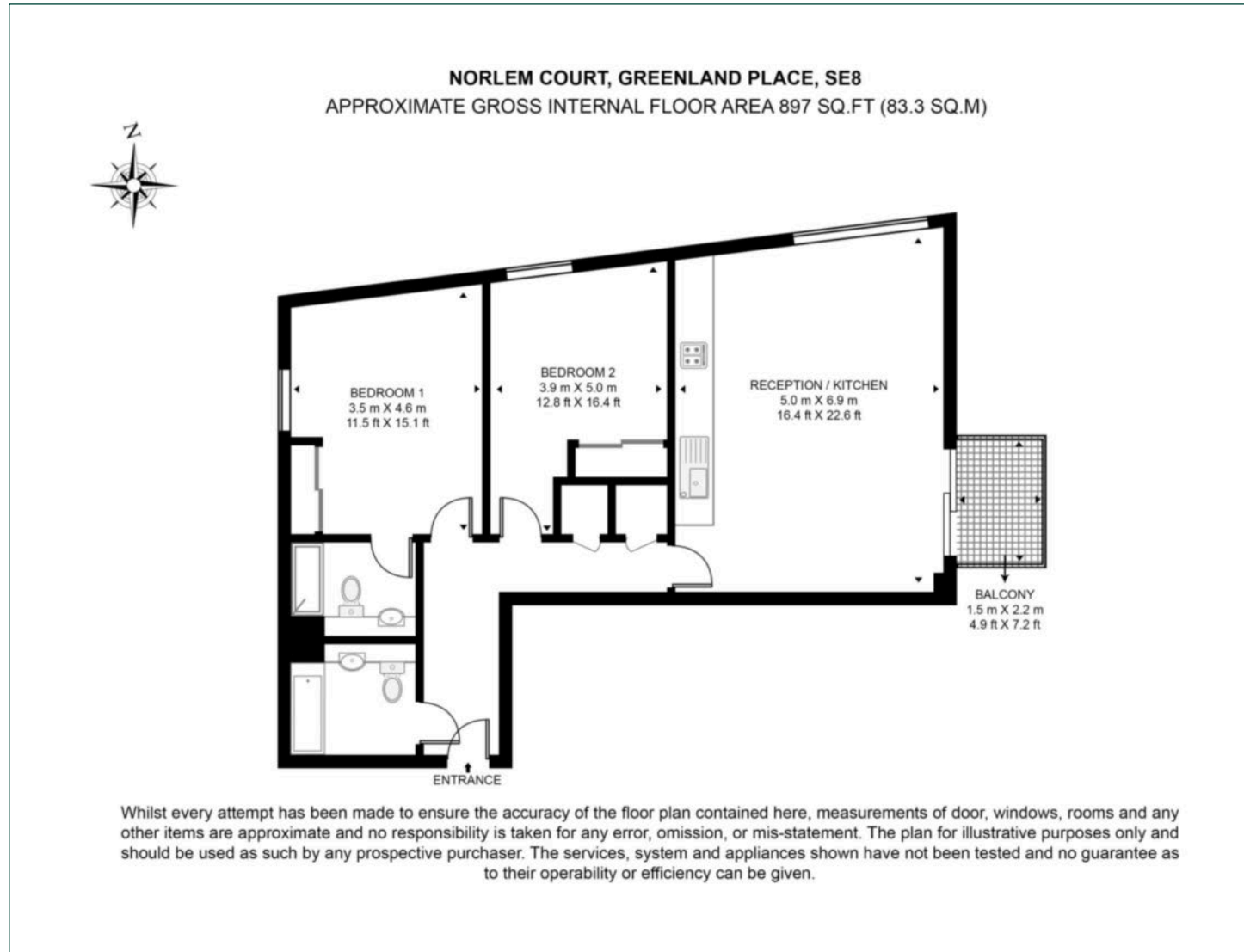
**Service Charge:** £3,224.53 p.a.

**EPC:** B



# Floorplan

897 sq ft | 83.3 sq m



## Greenwich

1 Crescent Arcade, 279 Creek Road, London, SE10 9EJ

## Sales

020 8853 8978 | [greenwich.sales@chaseevans.com](mailto:greenwich.sales@chaseevans.com)

## We're here to help.

IMPORTANT NOTICE - These particulars have been prepared in good faith and they are not intended to constitute part of an offer or contract. We have not performed a structural survey on this property and the services, appliances and specific fittings have not been tested. All photographs, measurements, floor plans and distances referred to are given as a guide and should not be relied upon.

[chaseevans.com](http://chaseevans.com)

 Chase Evans