

ONE BEDROOM

THIRD FLOOR APARTMENT

DESIGNER FURNISHINGS

WINTER GARDEN

GREAT LOCAL AMENITIES

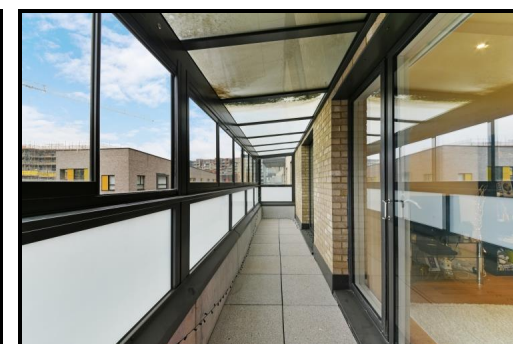
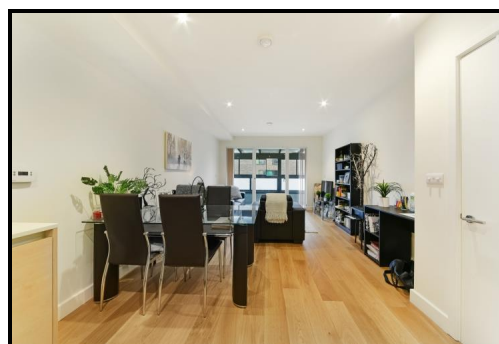
One Bed apartment located on the third floor of this luxury development within Greenwich Millennium village. The apartment boasts approximately 570 sq ft and benefits from access to a private winter garden, a fully integrated kitchen and furnishings to complement the high quality finish throughout.

£399,995 (Leasehold)



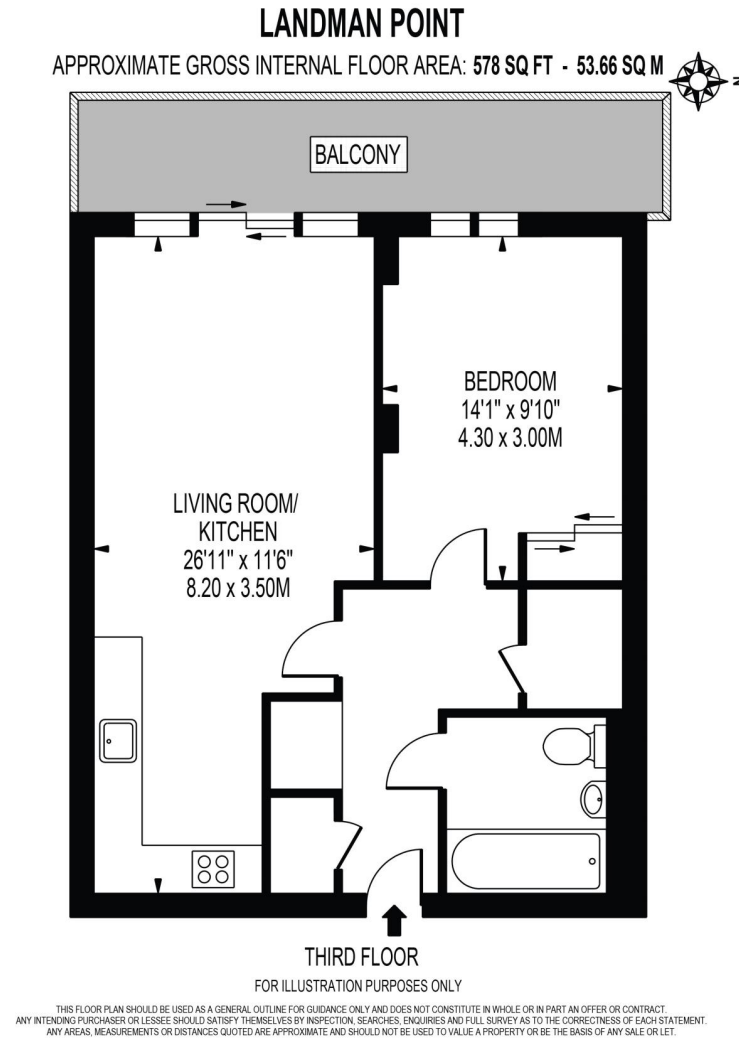
LANDMANN POINT, GREENWICH MILLENNIUM VILLAGE, GREENWICH SE10

£399,995 (Leasehold)



LANDMANN POINT, GREENWICH MILLENNIUM VILLAGE, GREENWICH SE10

£399,995 (Leasehold)



LANDMANN POINT, GREENWICH MILLENNIUM
VILLAGE, GREENWICH SE10

£399,995 (Leasehold)



Energy Efficiency Rating			Environmental Impact Rating		
	Current	Potential		Current	Potential
Very energy efficient - lower running costs			Very environmentally friendly - lower CO ₂ emissions		
(92-100) A			(92-100) A		
(81-91) B	83	83	(81-91) B	90	90
(69-80) C			(69-80) C		
(55-68) D			(55-68) D		
(39-54) E			(39-54) E		
(21-38) F			(21-38) F		
(1-20) G			(1-20) G		
Not energy efficient - higher running costs			Not environmentally friendly - higher CO ₂ emissions		
England & Wales			England & Wales		
EU Directive 2002/91/EC			EU Directive 2002/91/EC		
The energy efficiency rating is a measure of the overall efficiency of a home. The higher the rating the more energy efficient the home is and the lower the fuel bills will be.			The environmental impact rating is a measure of a home's impact on the environment in terms of carbon dioxide (CO ₂) emissions. The higher the rating the less impact it has on the environment.		

View Property

Contact Information:

Elephant and Castle Office

5 St Gabriel Walk, London, SE1 6FS

Tel: 020 3869 2888

Email: onetheelephant@chaseevans.co.uk