



## Windsor Court, King & Queen Wharf, Rotherhithe Street, SE16

OIEO **£535,000** | Leasehold

 Chase Evans



# Windsor Court, King & Queen Wharf, Rotherhithe Street, SE16



2 Bedrooms



2 Bathrooms



1 Reception



Swimming Pool



Riverside  
Development



Local Amenities



Concierge Service



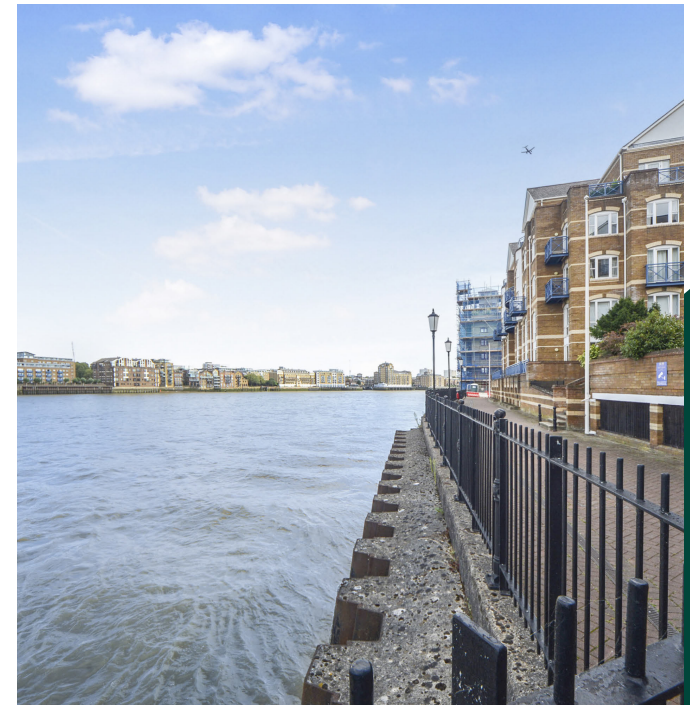
0.7 MI Rotherhithe

This generous two bedroom, two bathroom apartment is situated in a sought-after riverside development just steps from Rotherhithe station, SE16.

The property features a spacious living area adorned with full-height windows providing spectacular direct river views, a separate kitchen equipped with contemporary appliances, and two well-proportioned bedrooms with built-in storage. The master bedroom includes an ensuite bathroom, along with an additional family bathroom suite.

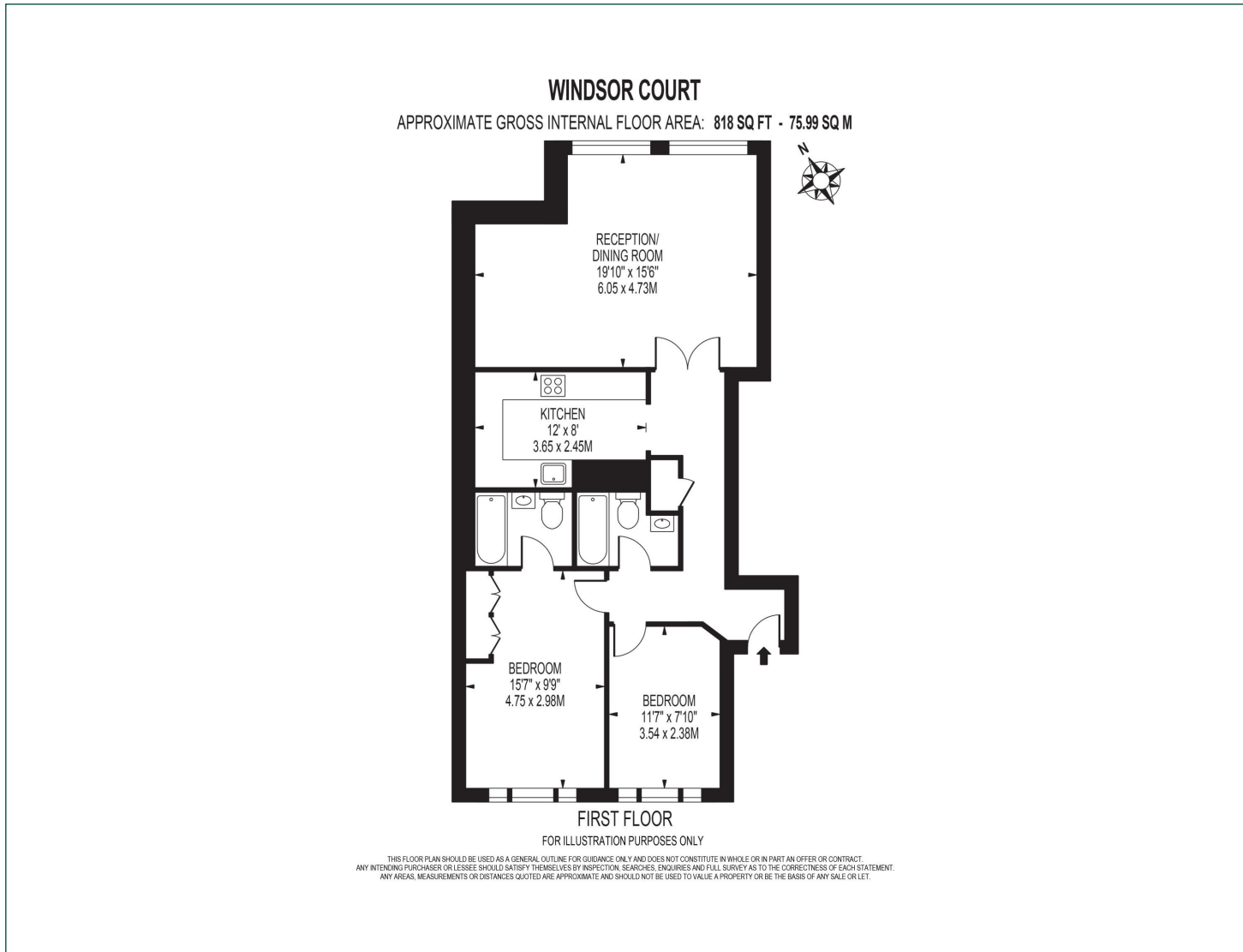
Residents benefit from concierge service, swimming pool, sauna and jacuzzi facilities. King and Queen Wharf is situated on the River Thames pathway, leading to Shad Thames and Tower Bridge with its upmarket riverside eateries and bars. It is approximately two thirds of a mile from Surrey Quays Shopping centre and Canada Water and is within walking distance of Rotherhithe station, which provides easy access to both Canary Wharf, the West End, and East and South West London. The historic 'Mayflower' pub and the Brunel museum are also close by.

<b>Tenure:</b>	Leasehold (964 years remaining)	<b>Local Authority:</b>	Southwark Council
<b>Ground Rent:</b>	£30 p.a.	<b>Council Tax Band:</b>	F
<b>Service Charge:</b>	£8,300.70 p.a.	<b>EPC:</b>	D



# Floorplan

818 sq ft | 75.99 sq m



## Greenwich

1 Crescent Arcade, 279 Creek Road, London, SE10 9EJ

## Sales

020 8853 8978 | [greenwich.sales@chaseevans.com](mailto:greenwich.sales@chaseevans.com)

## We're here to help.

IMPORTANT NOTICE - These particulars have been prepared in good faith and they are not intended to constitute part of an offer or contract. We have not performed a structural survey on this property and the services, appliances and specific fittings have not been tested. All photographs, measurements, floor plans and distances referred to are given as a guide and should not be relied upon.

[chaseevans.com](http://chaseevans.com)

 Chase Evans