



Rubicon, Tarves Way, Greenwich, SE10

Asking price **£500,000** | Leasehold



Rubicon, Tarves Way, Greenwich, SE10



2 Bedrooms



2 Bathrooms



1 Reception



Wrap Around
Balcony



Parking



0.5 MI Greenwich
Park



0.2 MI Greenwich

This charming two bedroom, two bathroom dual-aspect residence, complete with parking, is situated in a contemporary development.

The apartment features a fully equipped open-plan kitchen with integrated appliances, a generous master bedroom with an en suite bathroom and built-in wardrobes, a second bedroom, and a family bathroom. The space is enhanced by attractive wood flooring throughout. In addition to the 675 sq ft of interior space, there is a large private wrap-around balcony. The apartment also includes a parking space.

Just a short walk from Greenwich town centre, this property is conveniently located just 5 minutes from Greenwich station, providing easy transport links via the DLR, Thameslink, and Southeastern lines.

Additionally, Greenwich Park is only an 8-minute stroll away, granting easy access to attractions like the Royal Greenwich Observatory, the Prime Meridian, the Wilderness deer park, and expansive green spaces. Situated on the outskirts of Greenwich Park, you'll also find the National Maritime Museum nearby.

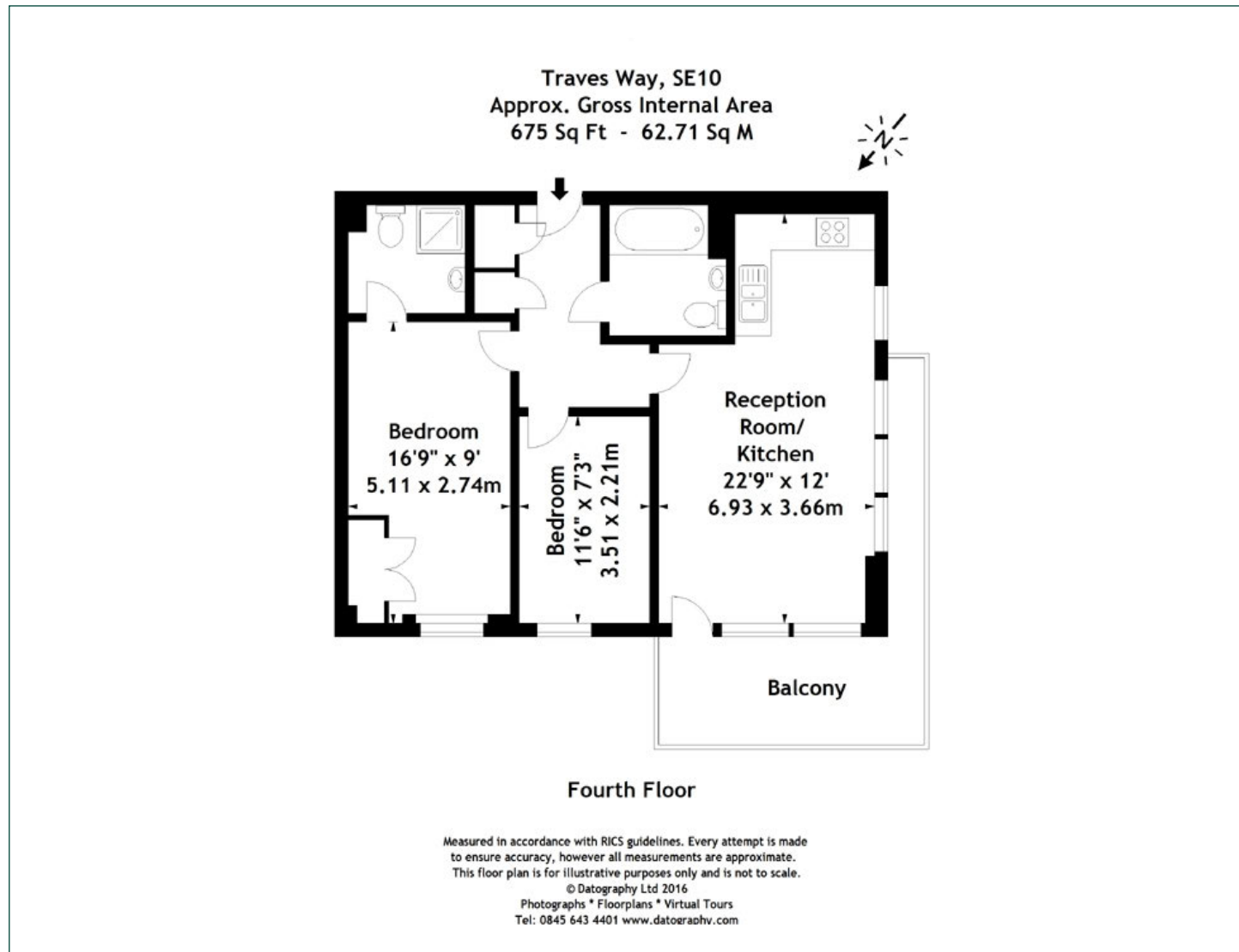
Tenure: Leasehold (105 years remaining) **Local Authority:** Greenwich London

Ground Rent: £250 p.a. **Council Tax Band:** C

Service Charge: £6,561.08 p.a. **EPC:** D

Floorplan

675 sq ft | 62.71 sq m



Greenwich

1 Crescent Arcade, 279 Creek Road, London, SE10 9EJ

Sales

020 8853 8978 | greenwich.sales@chaseevans.com

We're here to help.

IMPORTANT NOTICE - These particulars have been prepared in good faith and they are not intended to constitute part of an offer or contract. We have not performed a structural survey on this property and the services, appliances and specific fittings have not been tested. All photographs, measurements, floor plans and distances referred to are given as a guide and should not be relied upon.

chaseevans.com