

Wheatley House, Warman Walk, Greenwich, SE10

Price **£623 per week** | Furnished



Wheatley House, Warman Walk, Greenwich, SE10



2 Bedrooms



2 Bathrooms



1 Reception



Balcony



Communal Gardens



Local Amenities



24-Hour Concierge



0.9 MI North Greenwich

Modern two bedroom, two bathroom apartment located within this luxury development within Greenwich Millennium village. The apartment boasts approximately 817 sq ft and benefits from access to a private balcony, a fully integrated kitchen with appliances, wood flooring, floor to ceiling glazing, two spacious bedrooms with built-in wardrobes, master with en suite, modern bathroom with smart fittings and fixtures and furnishings to complement the high quality finish throughout. Large balcony providing views across London.

Residents have access to 24-hour concierge and communal gardens. Parkside Place Greenwich Millennium Village offers shops, open spaces and play areas, medical facilities and schools, creating a thriving new community for London. The bold architecture and design has created homes that let the light flood in and provide a sense of freedom and space. The apartment is located within walking distance of North Greenwich tube and the O2 arena.

Local Authority:

Greenwich London

Council Tax Band:

D

EPC:

B

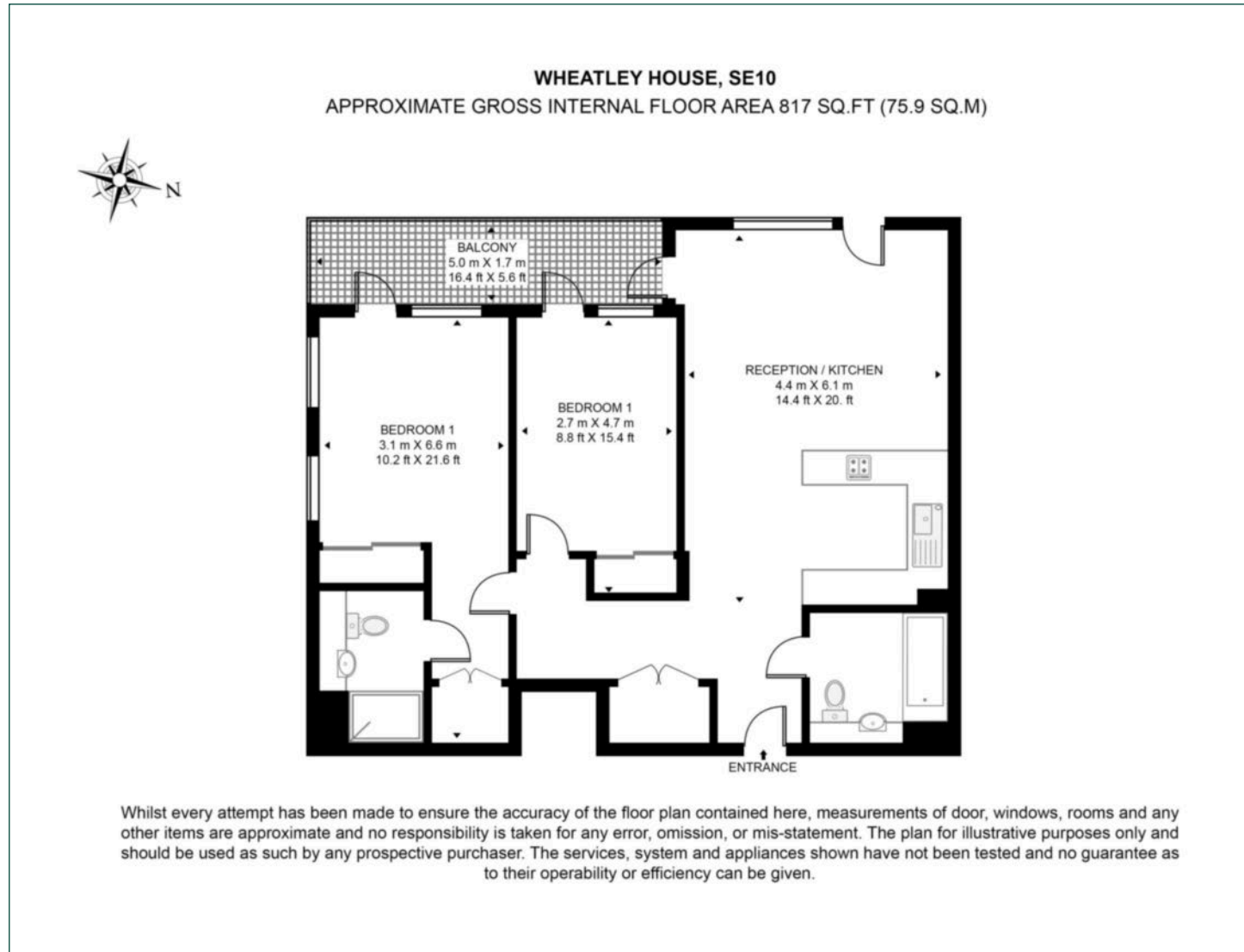
Security deposit:

equivalent to 5 weeks' rent



Floorplan

817 sq ft | 75.9 sq m



Greenwich

1 Crescent Arcade, 279 Creek Road, London, SE10 9EJ

Lettings

020 8853 8979 | greenwich.lettings@chaseevans.com

We're here to help.

IMPORTANT NOTICE - These particulars have been prepared in good faith and they are not intended to constitute part of an offer or contract. We have not performed a structural survey on this property and the services, appliances and specific fittings have not been tested. All photographs, measurements, floor plans and distances referred to are given as a guide and should not be relied upon.

chaseevans.com