










Union House, Bunton Street, Woolwich, SE18

Price **£470 per week** | Furnished



Union House, Bunton Street, Woolwich, SE18

-  2 Bedrooms
-  2 Bathrooms
-  1 Reception
-  Wraparound Terrace
-  Local Amenities
-  24-Hour Concierge
-  0.3 MI Woolwich Arsenal

Stunning two bedroom, two bathroom corner penthouse apartment set within Union House, Woolwich SE18. Comprising a spacious dual-aspect living area with floor-to-ceiling windows leading to a wraparound terrace offering views of the Thames and a fully integrated kitchen suite complete with breakfast bar. Two double bedrooms with built-in storage space, master en suite and a further family bathroom.

Residents additionally benefit from secure under block parking, local electric car charging points and a 24-hour concierge service. Locally, the property is

just 6mins away from Woolwich Arsenal Riverside DLR and National Rail Station for all DLR, Southeastern and Thameslink Services. With the DLR services, Canary Wharf can be reached in 19 mins and Bank in 27 mins. Elizabeth Line services the journey from Woolwich to Canary Wharf reduced to just 8 mins and even Paddington will be reachable in 40 mins.

Local Authority: Greenwich

Council Tax Band: C

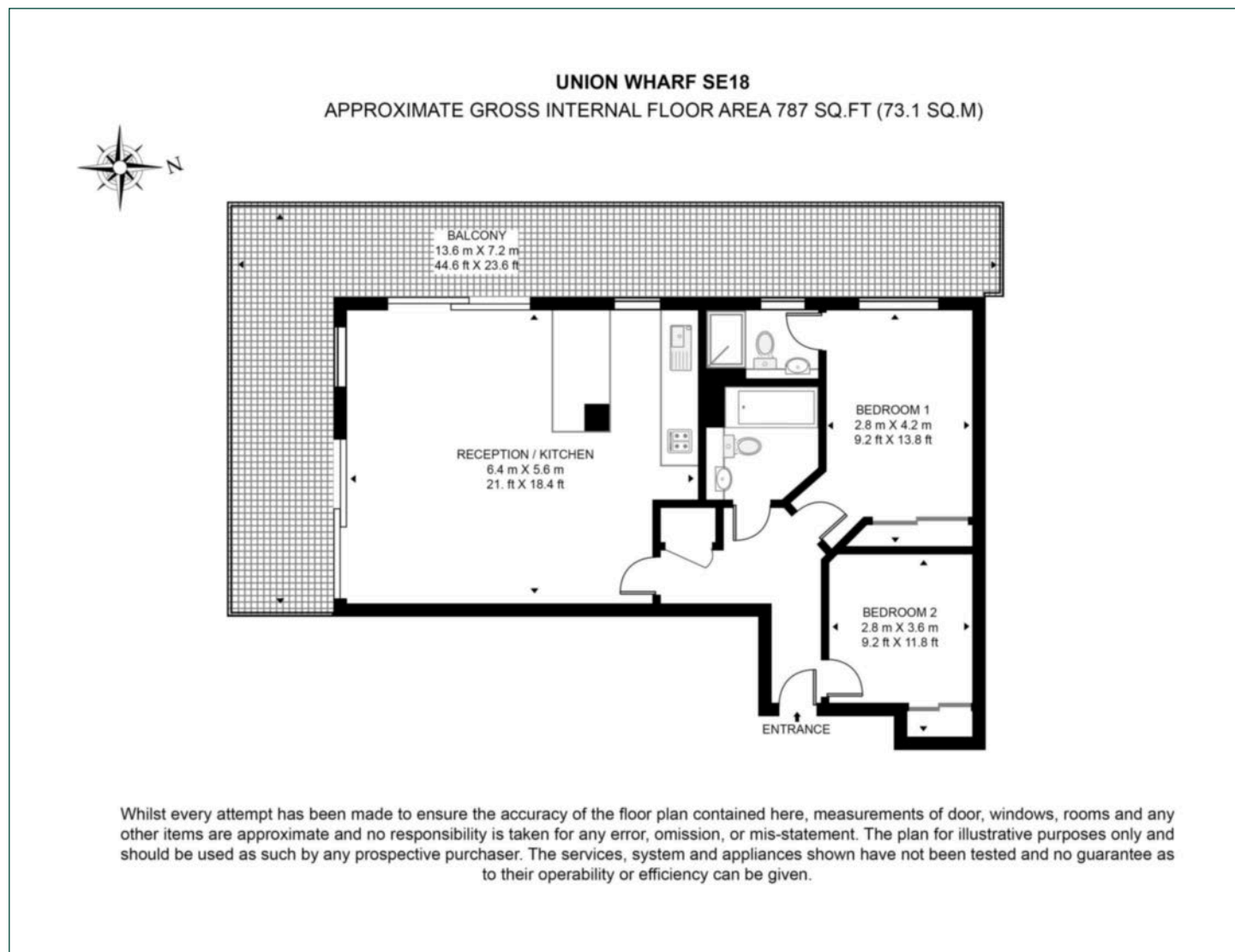
EPC: C

Security deposit: equivalent to 5 weeks' rent



Floorplan

787 sq ft | 73.1 sq m



Greenwich

1 Crescent Arcade, 279 Creek Road, London, SE10 9EJ

Lettings

020 8853 8979 | greenwich.lettings@chaseevans.co.uk

We're here to help.

IMPORTANT NOTICE - These particulars have been prepared in good faith and they are not intended to constitute part of an offer or contract. We have not performed a structural survey on this property and the services, appliances and specific fittings have not been tested. All photographs, measurements, floor plans and distances referred to are given as a guide and should not be relied upon.

chaseevans.com