



## Cherrywood Lodge, Birdwood Avenue, Lewisham, SE13

Asking price **£275,000** | Leasehold



# Cherrywood Lodge, Birdwood Avenue, Lewisham, SE13



1 Bedroom



1 Bathroom



1 Reception



Nearby Park



Local Amenities



Concierge



0.6 MI Hither Green



Underground  
Parking Space

Modern one bedroom property set within Cherrywood Lodge, located within Meridian South Development. Accommodation spans 495 sq ft and includes an open plan living room, sleek fitted kitchen with integrated appliances and ample cupboard space, wood flooring, high ceilings, floor to ceiling glazing, fitted bedroom wardrobe space, tiled bathroom décor. Ample hallway storage. Ideal first home or investment. Underground parking space included.

Ideally situated just a short walk away from Hither Green Station, providing frequent services into

Central London as well as friendly local shops, a variety of places to eat and drink, and the beautiful open spaces of Mountsfield Park. Hither Green Lane is well served by local nurseries and good primary schools. Concierge in the clock house.

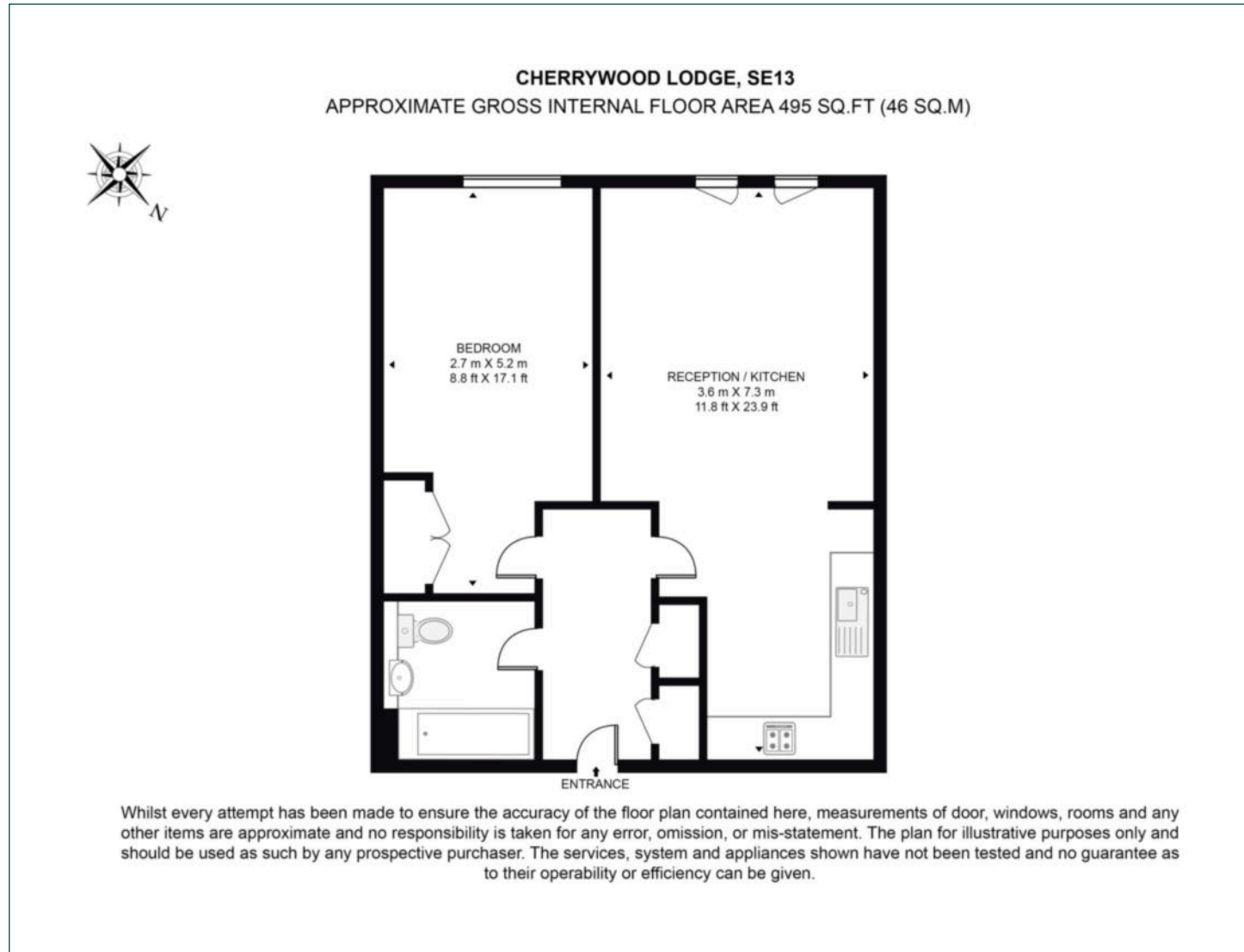
<b>Tenure:</b>	Leasehold (109 years remaining)	<b>Local Authority:</b>	Lewisham London
<b>Ground Rent:</b>	£200 p.a.	<b>Council Tax Band:</b>	B
<b>Service Charge:</b>	£1,906.00 p.a.	<b>EPC:</b>	C





# Floorplan

495 sq ft | 46 sq m



## Docklands

St David's Square, 320 Westferry Road, London, E14 3QL

## Sales

020 7510 8445 | [docklands.sales@chaseevans.co.uk](mailto:docklands.sales@chaseevans.co.uk)

## We're here to help.

IMPORTANT NOTICE - These particulars have been prepared in good faith and they are not intended to constitute part of an offer or contract. We have not performed a structural survey on this property and the services, appliances and specific fittings have not been tested. All photographs, measurements, floor plans and distances referred to are given as a guide and should not be relied upon.

[chaseevans.com](http://chaseevans.com)

 Chase Evans