



## Deveraux House, Royal Arsenal Riverside, Duke Of Wellington Avenue, SE18

Asking price **£840,000** | Leasehold





# Deveraux House, Royal Arsenal Riverside, Duke Of Wellington Avenue, SE18



3 Bedrooms



2 Bathrooms



1 Reception



2 Balconies



Gymnasium



Local Amenities



Nearby Parks



0.3 MI Woolwich

A modern and spacious three bedroom property benefitting from direct river Thames views in this exciting new Berkeley Homes riverside development close to Woolwich DLR and stations. Generously sized and streaming with natural light, the property comprises a fully fitted, open-plan kitchen & living room, three bedrooms and two luxury bathrooms. Chain-free sale.

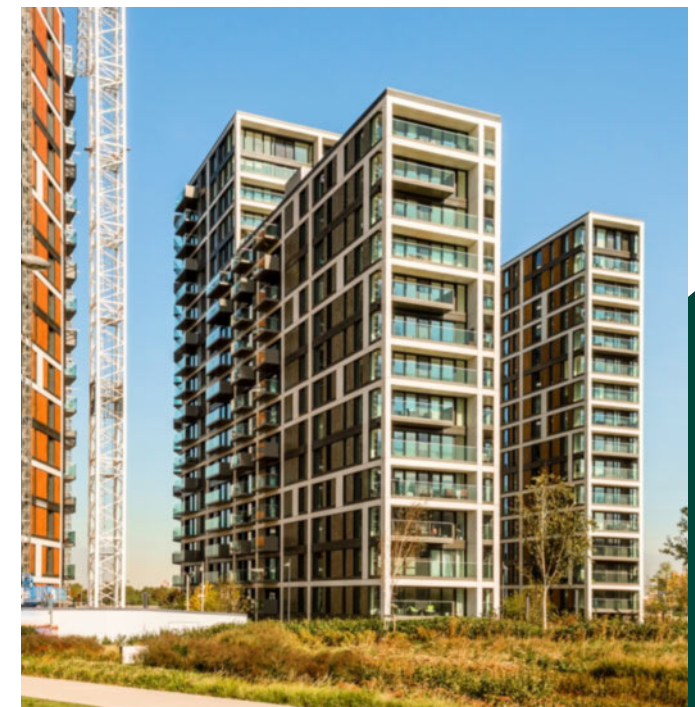
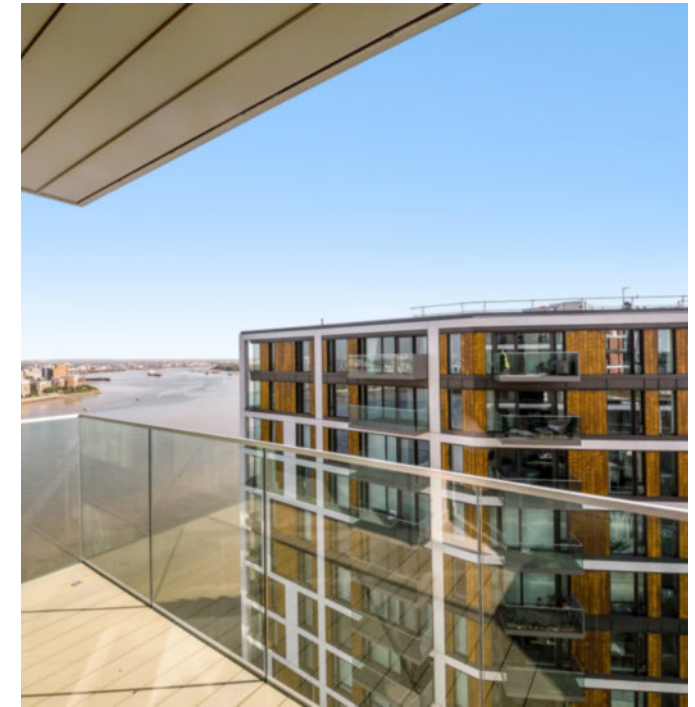
Royal Arsenal Riverside is a stunning new riverside neighbourhood offering a relaxing and luxurious lifestyle in the Royal Borough of Greenwich. The development will offer onsite fitness options such

as a gym, 20m swimming pool, spa, treatment rooms, as well as success to a cinema and open spaces, parks and a 1 km long river walk.

**Tenure:** Leasehold (991 years remaining) **Local Authority:** Greenwich London

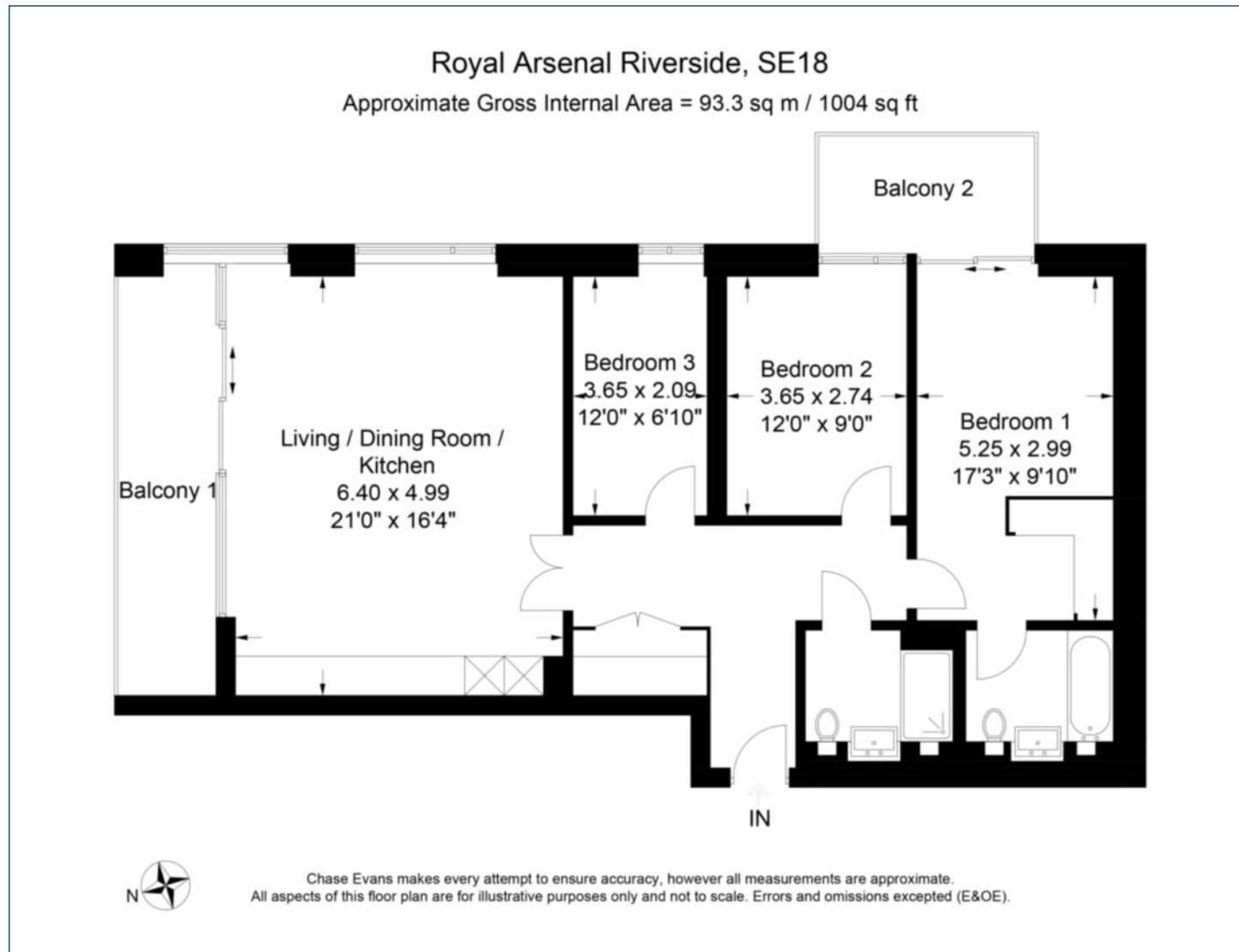
**Ground Rent:** £525 p.a. **Council Tax Band:** E

**Service Charge:** £6,200 p.a. **EPC:** B



# Floorplan

1,004 sq ft | 93.3 sq m



## Greenwich

1 Crescent Arcade, 279 Creek Road, London, SE10 9EJ

## Sales

020 8853 8978 | [greenwich.sales@chaseevans.com](mailto:greenwich.sales@chaseevans.com)

## We're here to help.

IMPORTANT NOTICE - These particulars have been prepared in good faith and they are not intended to constitute part of an offer or contract. We have not performed a structural survey on this property and the services, appliances and specific fittings have not been tested. All photographs, measurements, floor plans and distances referred to are given as a guide and should not be relied upon.

[chaseevans.com](http://chaseevans.com)

 Chase Evans