

Roma Corte, The Renaissance, Elmira Street, SE13

Asking price **£425,000** | Leasehold



Roma Corte, The Renaissance, Elmira Street, SE13



2 Bedrooms



1 Bathroom



1 Reception



Balcony



Local Amenities



24-Hour Concierge



0.1 MI Lewisham

Luxury two bedrooms property within Roma Corte a part of The Renaissance, a sophisticated Barratt Homes development in the heart of Lewisham. The apartment has an inviting living space providing Canary Wharf views and benefits from access to a private balcony, fully integrated kitchen, wood flooring, floor to ceiling glazing, modern bedrooms with built-in wardrobes. Parking is included.

Residents will also have access to a 24-hour concierge service. There are several amenities located nearby including the Lewisham Shopping Centre. The development is located near to

Lewisham station, providing DLR and rail services for commutes towards Canary Wharf and the City.

Tenure: Leasehold (115 years remaining) **Local Authority:** Lewisham London

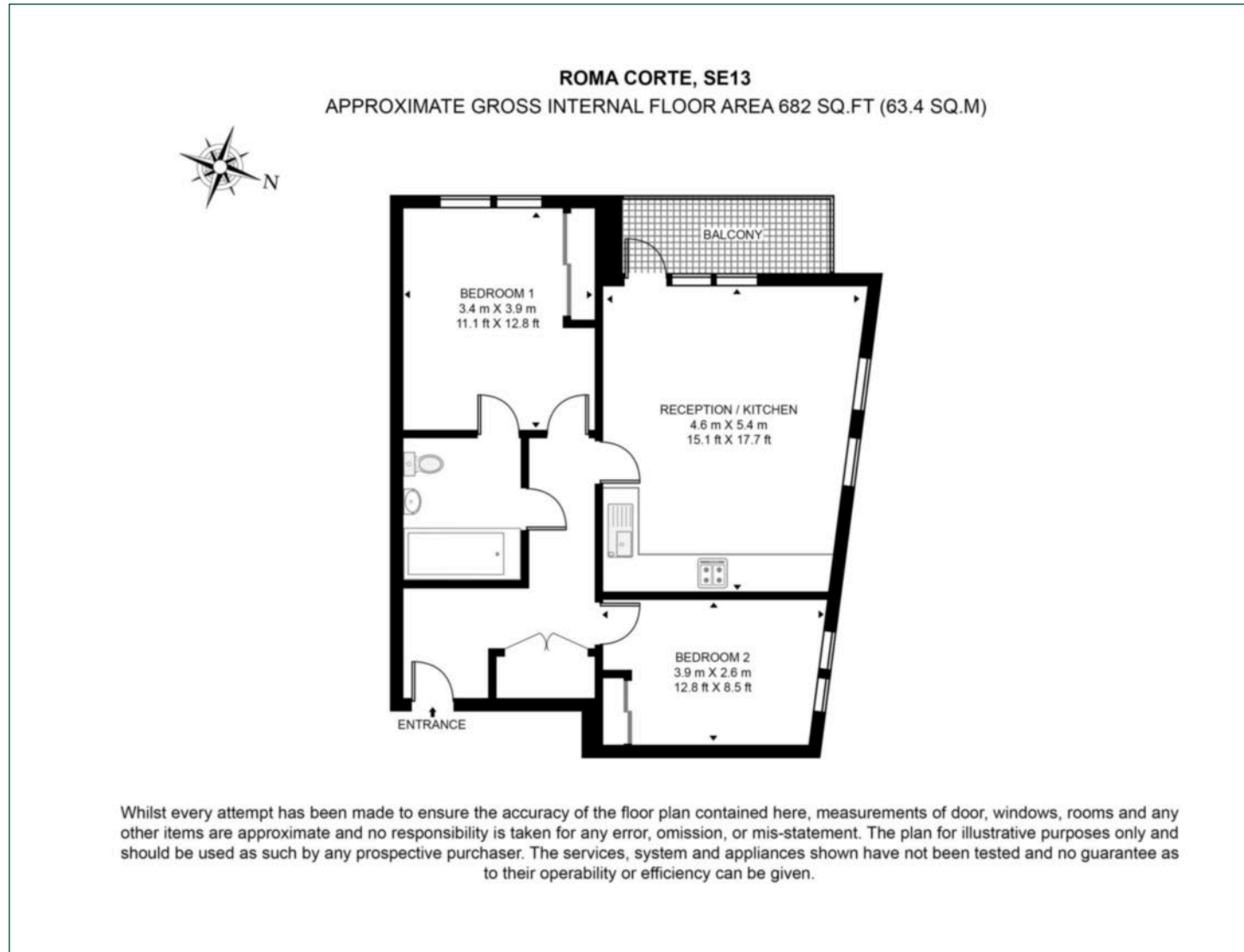
Ground Rent: £350 p.a. **Council Tax Band:** C

Service Charge: £3,127.10 p.a. **EPC:** B



Floorplan

682 sq ft | 63.4 sq m



Greenwich

1 Crescent Arcade, 279 Creek Road, London, SE10 9EJ

Sales

020 8853 8978 | greenwich.sales@chaseevans.com

We're here to help.

IMPORTANT NOTICE - These particulars have been prepared in good faith and they are not intended to constitute part of an offer or contract. We have not performed a structural survey on this property and the services, appliances and specific fittings have not been tested. All photographs, measurements, floor plans and distances referred to are given as a guide and should not be relied upon.

[chaseevans.com](https://www.chaseevans.com)