



Bloom House, Bermondsey Works, Rotherhithe New Road, Bermondsey, SE16

Price **£700 per week** | Furnished



Bloom House, Bermondsey Works, Rotherhithe New Road, Bermondsey, SE16



3 Bedrooms



2 Bathrooms



1 Reception



Balcony



Gymnasium



Local Amenities



24-Hour Concierge



0.3 MI South
Bermondsey

A three bedroom, two bathroom apartment within Bloom House; part of the impressive Bermondsey Works development. This furnished apartment includes an inviting living and dining area, fitted kitchen with integrated appliances, wood flooring, underfloor heating, full length windows, fitted bedroom storage, master en suite, modern bathroom suite and a private balcony.

Residents also have access to a 24-hour concierge service, parking, private residents' gymnasium, landscaped roof gardens and communal bicycle storage. There are amenities located nearby

including restaurants, cafés, shops and the vast green space of Burgess Park. The development is located near to South Bermondsey railway station, providing a valuable transport link for commutes to destinations across the Capital.

Local Authority: Southwark Council

Council Tax Band: E

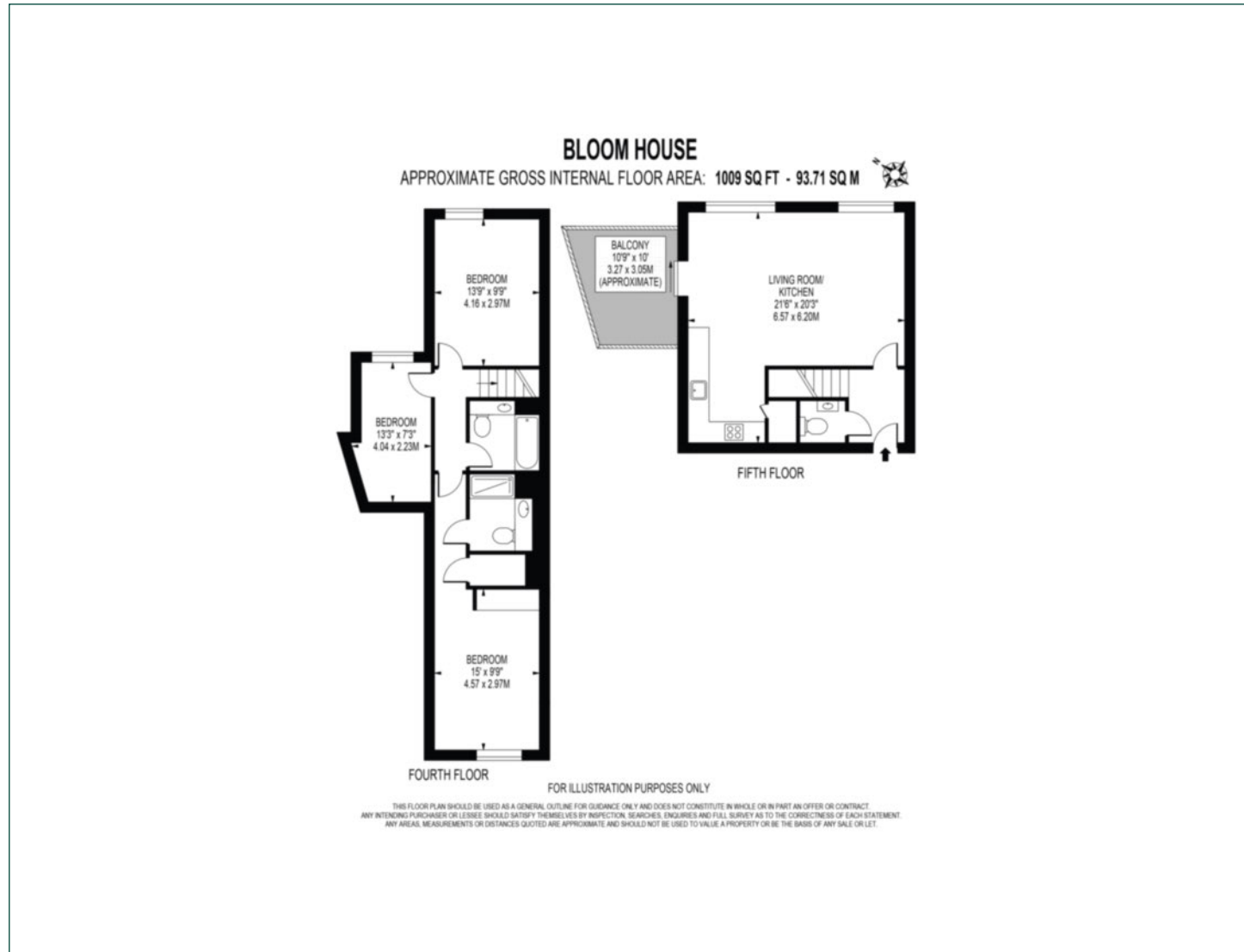
EPC: B

Security deposit: equivalent to 5 weeks' rent



Floorplan

1,009 sq ft | 93.71 sq m



Greenwich

1 Crescent Arcade, 279 Creek Road, London, SE10 9EJ

Lettings

020 8853 8979 | greenwich.lettings@chaseevans.com

We're here to help.

IMPORTANT NOTICE - These particulars have been prepared in good faith and they are not intended to constitute part of an offer or contract. We have not performed a structural survey on this property and the services, appliances and specific fittings have not been tested. All photographs, measurements, floor plans and distances referred to are given as a guide and should not be relied upon.

[chaseevans.com](https://www.chaseevans.com)