

## Ontario Point, Surrey Quays Street, Canada Water, SE16

Asking price **£650,000** | Leasehold





# Ontario Point, Surrey Quays Street, Canada Water, SE16



1 Bedroom



1 Bathroom



1 Reception



Balcony



Gymnasium



Local Amenities



24-Hour Concierge



0.1 MI Canada Water

A one bedroom luxury property with an impressive winter garden set on the 21st floor of the sought after Ontario Point SE16.

The property consists of a large open plan living space with underfloor heating throughout, sleek fitted kitchen, floor to ceiling glazing, air conditioning, high ceilings, a well-proportioned double bedroom with fitted wardrobes, a modern bathroom and a delightful glass winter garden marking the most of the outstanding views of central London, the River Thames and Canary Wharf. Ample storage through-out.

Residents can benefit from 24-hour concierge services and a fully equipped gymnasium which is located in a separate building, communal roof garden on the 25th Floor providing amazing views and the onsite supermarket.

Located ideally next to Canada Water station - Jubilee line station, there is also a bus station with numerous links. Surrey Quays shopping centre amenities is a short walk, which has a large 24-hour Tesco superstore, as well as various useful day to day stores such as Boots, Superdrug, Starbucks, WHSmiths and a branch of HSBC.

**Tenure:** Leasehold (112 years remaining)

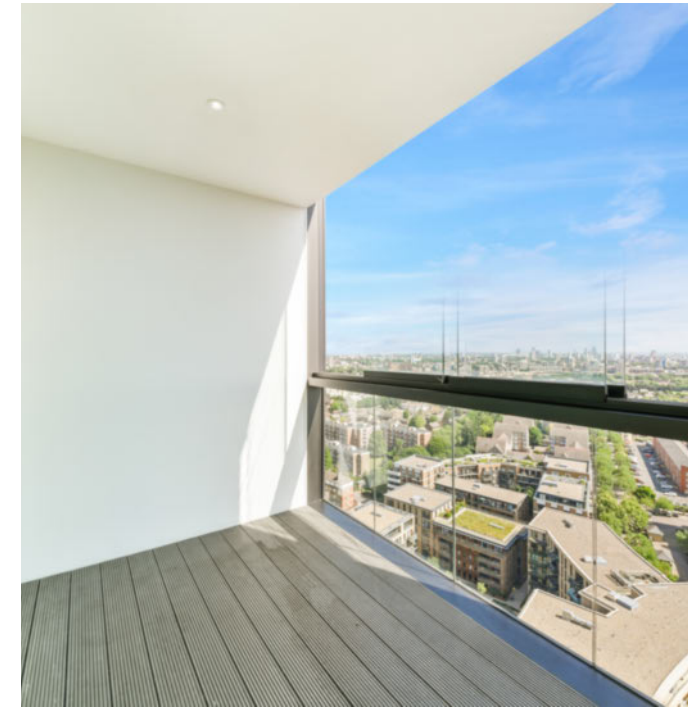
**Local Authority:** Southwark Council

**Ground Rent:** £400 p.a.

**Council Tax Band:** D

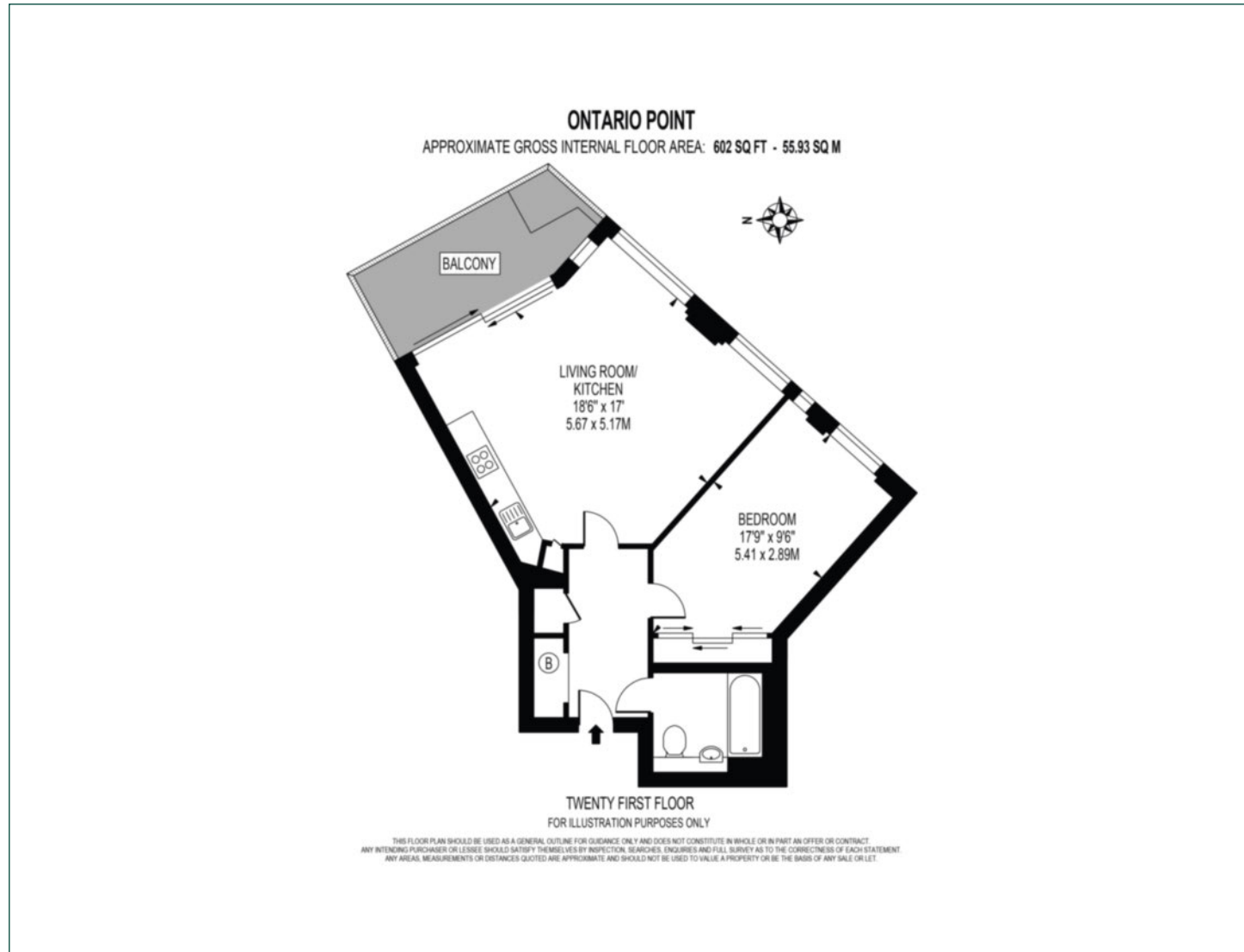
**Service Charge:** £3,200 p.a.

**EPC:** B



# Floorplan

602 sq ft | 55.93 sq m



## Greenwich

1 Crescent Arcade, 279 Creek Road, London, SE10 9EJ

## Sales

020 8853 8978 | [greenwich.sales@chaseevans.com](mailto:greenwich.sales@chaseevans.com)

## We're here to help.

IMPORTANT NOTICE - These particulars have been prepared in good faith and they are not intended to constitute part of an offer or contract. We have not performed a structural survey on this property and the services, appliances and specific fittings have not been tested. All photographs, measurements, floor plans and distances referred to are given as a guide and should not be relied upon.

[chaseevans.com](https://www.chaseevans.com)