



Queensgate House, Hereford Road, Bow, E3

Price **£435 per week** | Furnished



Queensgate House, Hereford Road, Bow, E3



1 Bedroom



1 Bathroom



1 Reception



Lift Access



Great Local Amenities



0.4 MI Bow Road

A stunning top-floor, one double bedroom apartment set within this secure, modern and sought-after Bow Central development, E3. This property boasts a well spaced open plan living area, fully fitted integrated kitchen and a highly specified bathroom suite.

Residents benefit from lift access to all floors and permit parking. Queensgate House is within close proximity of the social hub that is Roman Road Market with its shops, cafes, restaurants. Transport links include Mile End station (Central, District and Hammersmith & City), Bow Road (District and

Hammersmith & City) and Bow Church DLR. Both the open green spaces of Victoria Park and the Olympic Village are within walking distance.

Local Authority:

Tower Hamlets

Council Tax Band:

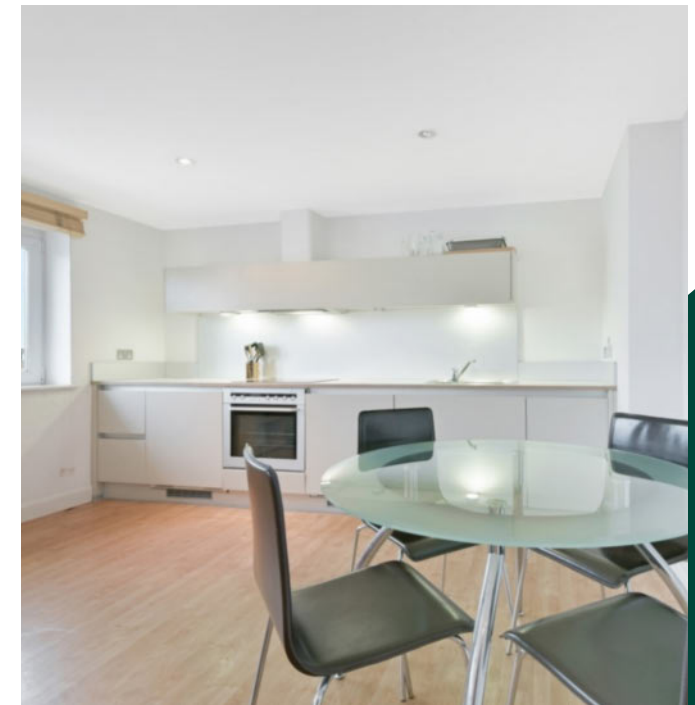
C

EPC:

C

Security deposit:

equivalent to 5 weeks' rent



Floorplan

415 sq ft | 38.52 sq m



Canary Wharf

Horizon Building, 15 Hertsmere Road, London, E14 4AW

Lettings

020 7515 1000 | canarywharf.lettings@chaseevans.com

We're here to help.

IMPORTANT NOTICE - These particulars have been prepared in good faith and they are not intended to constitute part of an offer or contract. We have not performed a structural survey on this property and the services, appliances and specific fittings have not been tested. All photographs, measurements, floor plans and distances referred to are given as a guide and should not be relied upon.

[chaseevans.com](https://www.chaseevans.com)