



Howard House, Evelyn Street, Deptford, SE8

OIEO **£300,000** | Leasehold



Howard House, Evelyn Street, Deptford, SE8



1 Bedroom



1 Bathroom



1 Reception



Nearby Green Spaces



Local Amenities

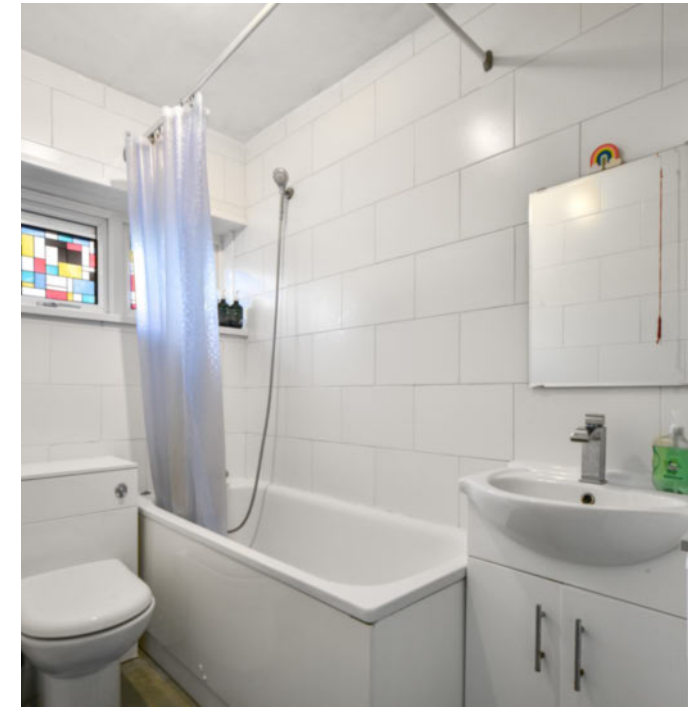


0.2 MI Deptford

Spacious one bedroom property with an additional bonus of a separate room which is used as second kitchen /cabinet, set within Howard House.

Accommodation spans 533 sq ft and includes an superb living room with an abundance of light and space, separate fitted kitchen with integrated appliances, benefits of the extra room include a kitchenette or can be used as a spare room. Features wood flooring, good sized bedroom with fitted storage and tiled bathroom décor. Ample storage cupboards through-out. Located on the third floor offering views of the London skyline.

Conveniently located close to tri-weekly Deptford Market with an array of trendy cafes, bars and delicatessens and walking distance to Cutty Sark. Fantastic transport links into London Bridge, Cannon Street and Canary Wharf. The historic Greenwich Park and Town Centre are only a short commute away.



Tenure: Leasehold (91 years remaining)

Local Authority: Lewisham London

Ground Rent: £10 p.a.

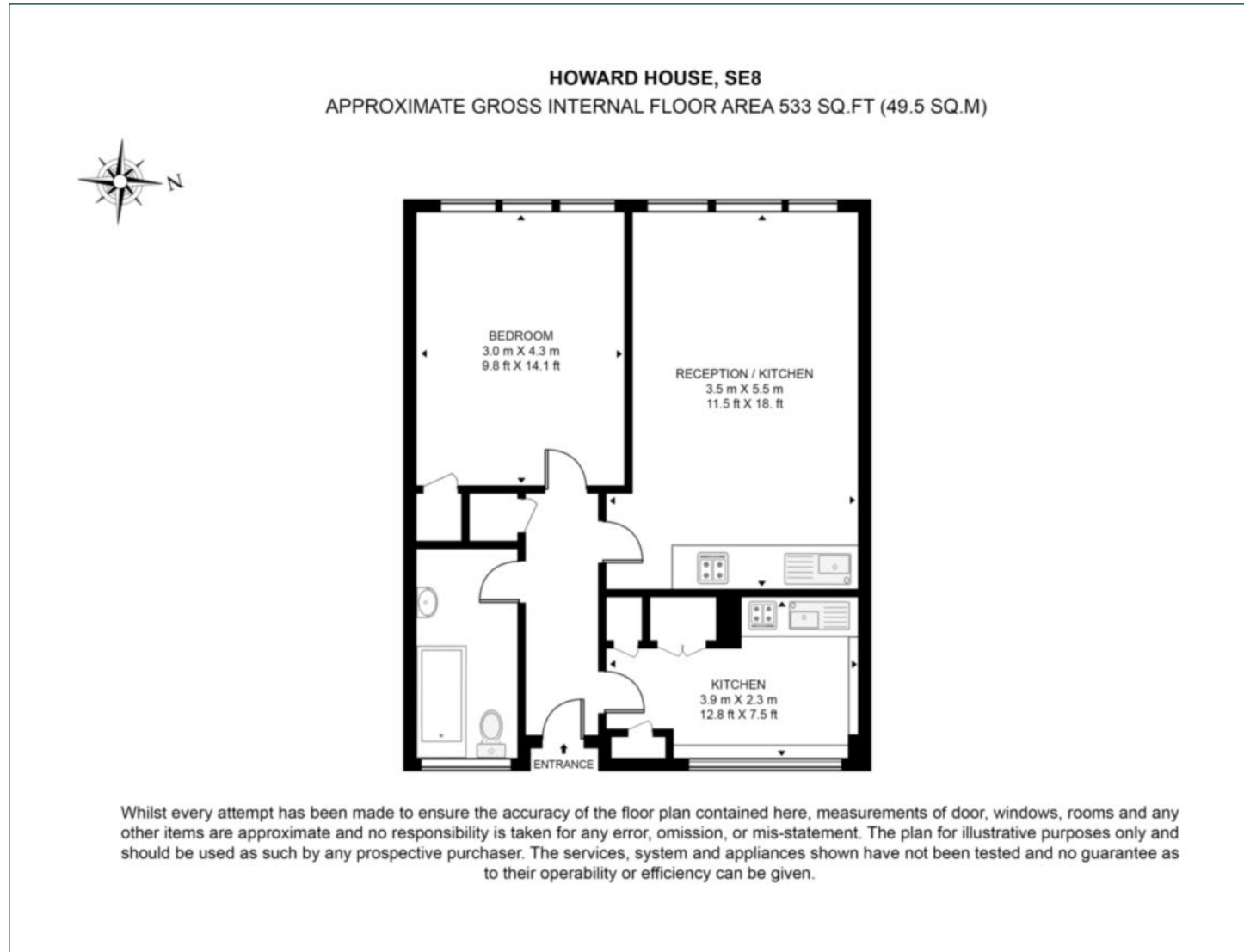
Council Tax Band: A

Service Charge: £1,138.46 p.a.

EPC: C

Floorplan

533 sq ft | 49.5 sq m



Greenwich

1 Crescent Arcade, 279 Creek Road, London, SE10 9EJ

Sales

020 8853 8978 | greenwich.sales@chaseevans.com

We're here to help.

IMPORTANT NOTICE - These particulars have been prepared in good faith and they are not intended to constitute part of an offer or contract. We have not performed a structural survey on this property and the services, appliances and specific fittings have not been tested. All photographs, measurements, floor plans and distances referred to are given as a guide and should not be relied upon.

chaseevans.com