

## Royal Victoria Gardens, Marine Wharf, Surrey Quays, SE16

Asking price **£550,000** | Leasehold



# Royal Victoria Gardens, Marine Wharf, Surrey Quays, SE16



2 Bedrooms



2 Bathrooms



1 Reception



Balcony



Gymnasium



Local Amenities



24-Hour Concierge



0.6 MI Surrey Quays

A beautifully presented two bedroom, two bathroom property within Royal Victoria Gardens; within the impressive Marine Wharf development located along the Greenland Dock Marina. This apartment includes an open plan living and dining area, fitted kitchen with integrated appliances, wood flooring, fitted bedroom storage, master en suite, family bathroom suite and a private L shaped east facing balcony.

Residents will also have access to an on-site 24-hour concierge service and a residents' gymnasium. There are several amenities located

nearby including the Surrey Quays Shopping Centre. The development is located near to Underground and Overground transport services, for commutes towards the City and West End.

**Tenure:** Leasehold (987 years remaining) **Local Authority:** Lewisham London

**Ground Rent:** £350 p.a. **Council Tax Band:** E

**Service Charge:** £3,776.70 p.a. **EPC:** B

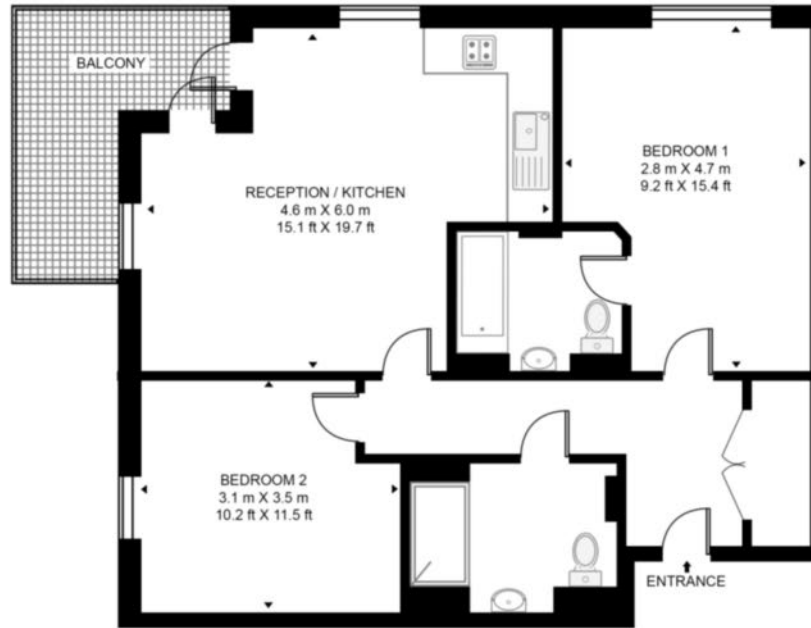


# Floorplan

719 sq ft | 66.8 sq m



ROYAL VICTORIA GARDENS, MARINE WHARF, SE16  
APPROXIMATE GROSS INTERNAL FLOOR AREA 719 SQ.FT (66.8 SQ.M)



Whilst every attempt has been made to ensure the accuracy of the floor plan contained here, measurements of door, windows, rooms and any other items are approximate and no responsibility is taken for any error, omission, or mis-statement. The plan for illustrative purposes only and should be used as such by any prospective purchaser. The services, system and appliances shown have not been tested and no guarantee as to their operability or efficiency can be given.

## Greenwich

1 Crescent Arcade, 279 Creek Road, London, SE10 9EJ

## Sales

020 8853 8978 | [greenwich.sales@chaseevans.com](mailto:greenwich.sales@chaseevans.com)

## We're here to help.

IMPORTANT NOTICE - These particulars have been prepared in good faith and they are not intended to constitute part of an offer or contract. We have not performed a structural survey on this property and the services, appliances and specific fittings have not been tested. All photographs, measurements, floor plans and distances referred to are given as a guide and should not be relied upon.

[chaseevans.com](http://chaseevans.com)

 Chase Evans