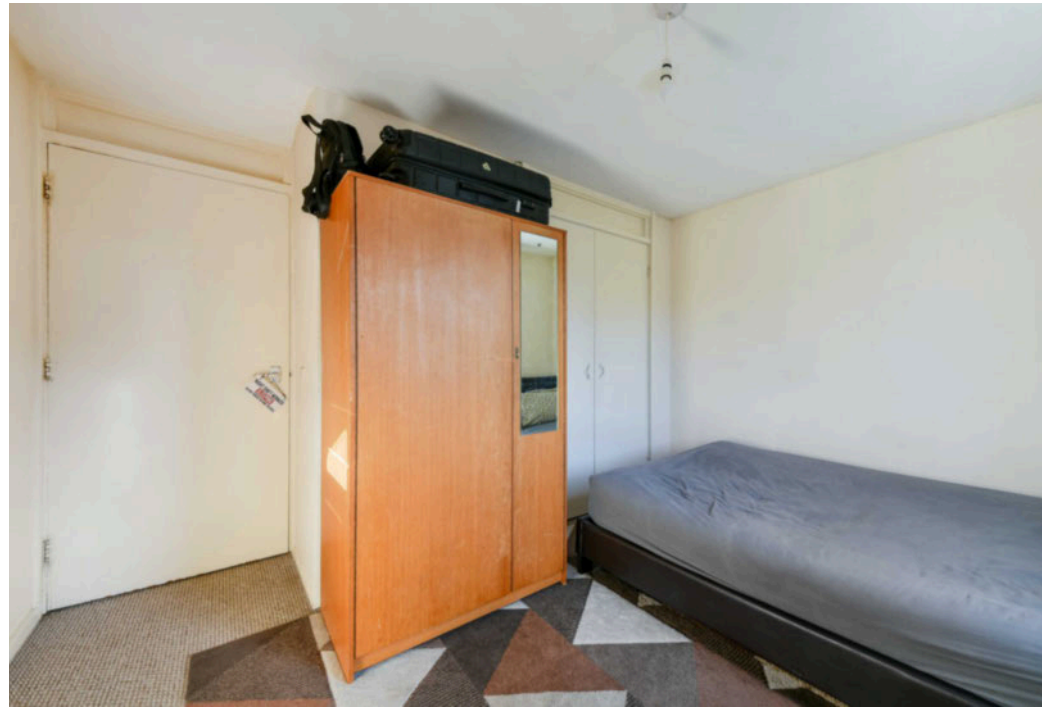
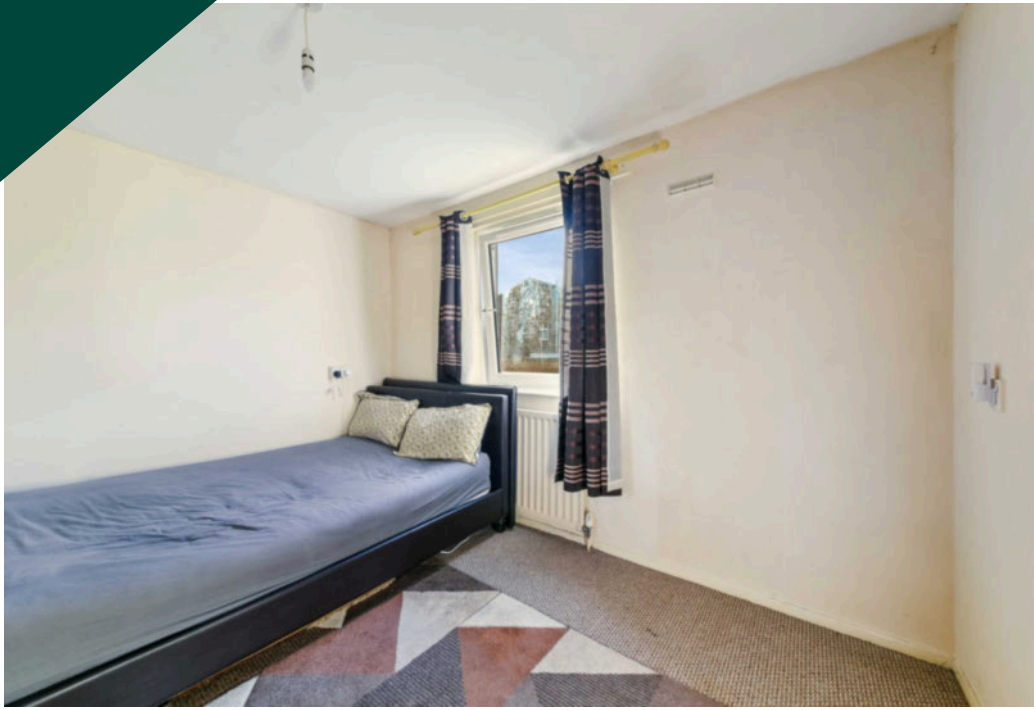




Loxley Close, Sydenham, London, SE26

Asking price **£289,995** | Leasehold



Loxley Close, Sydenham, London, SE26



1 Bedroom



1 Bathroom



1 Reception



Communal Gardens



Unlocated Parking



Local Amenities



0.4 Sidenham Station



1.4 MI Crystal Palace Park

This bright one-bedroom contemporary property is set on a quiet street close to the excellent amenities of Sydenham Town centre. The accommodation is set on the top floor of a two-storey terraced house in a cul-de-sac location with ample unlocated residential and visitors' parking. A hallway leads to all principal rooms including the living room, bedroom, bathroom, and the separate kitchen. The property has ample living space and plenty of storage options throughout. Features include double glazing.

Sydenham is a 'thriving', green and hilly London suburb with a vibrant high street and excellent National Rail and Overground train services. The property is near two great parks: Mayow Park and Home Park. A short distance away is the large Crystal Palace Park.

Tenure: Leasehold (120 remaining)

Local Authority: Lewisham

Ground Rent: £10 p.a.

Council Tax Band: B

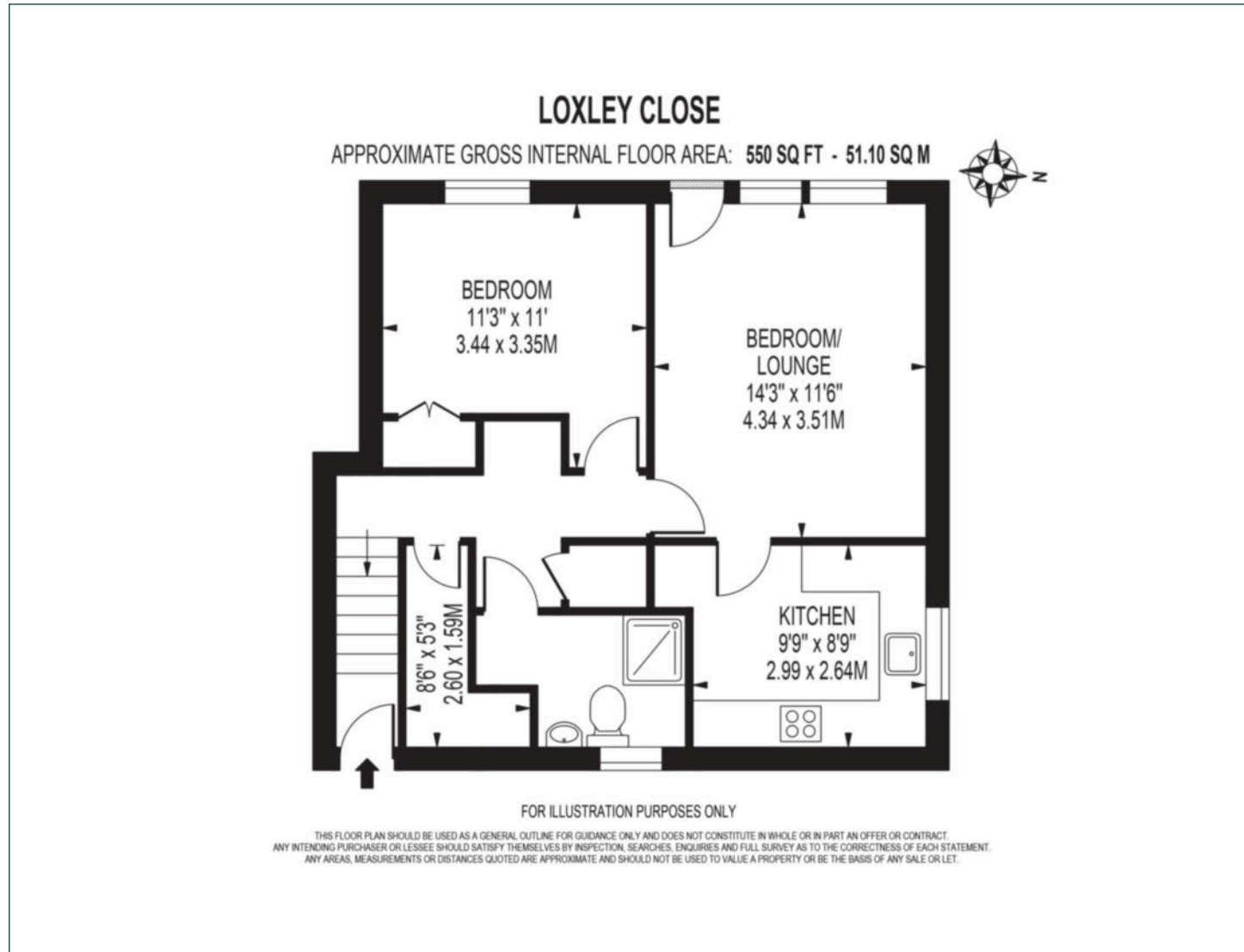
Service Charge: £461 p.a.

EPC: C



Floorplan

550 sq ft | 51.10 sq m



Greenwich

1 Crescent Arcade, 279 Creek Road, London, SE10 9EJ

Sales

020 8853 8978 | greenwich.sales@chaseevans.com

We're here to help.

IMPORTANT NOTICE - These particulars have been prepared in good faith and they are not intended to constitute part of an offer or contract. We have not performed a structural survey on this property and the services, appliances and specific fittings have not been tested. All photographs, measurements, floor plans and distances referred to are given as a guide and should not be relied upon.

chaseevans.com