



Royal Victoria Gardens, Marine Wharf, Whiting Way, Surrey Quays, SE16

Asking price **£565,000** | Leasehold



Royal Victoria Gardens, Marine Wharf, Whiting Way, Surrey Quays, SE16



2 Bedrooms



2 Bathrooms



1 Reception



Balcony



Gymnasium



Local Amenities



Concierge Service



0.4 MI Surrey Quays

A beautifully presented two bedroom, two bathroom property within Royal Victoria Gardens; within the impressive Marine Wharf development located along the Greenland Dock Marina. This apartment includes an open plan living and dining area, fitted kitchen with integrated appliances, wood flooring, fitted bedroom storage, master en suite, family bathroom suite and a private balcony.

Residents will also have access to an on-site concierge service and a residents' gymnasium. There are several amenities located nearby including the Surrey Quays Shopping Centre. The

development is located near to Underground and Overground transport services, for commutes towards the City and West End.



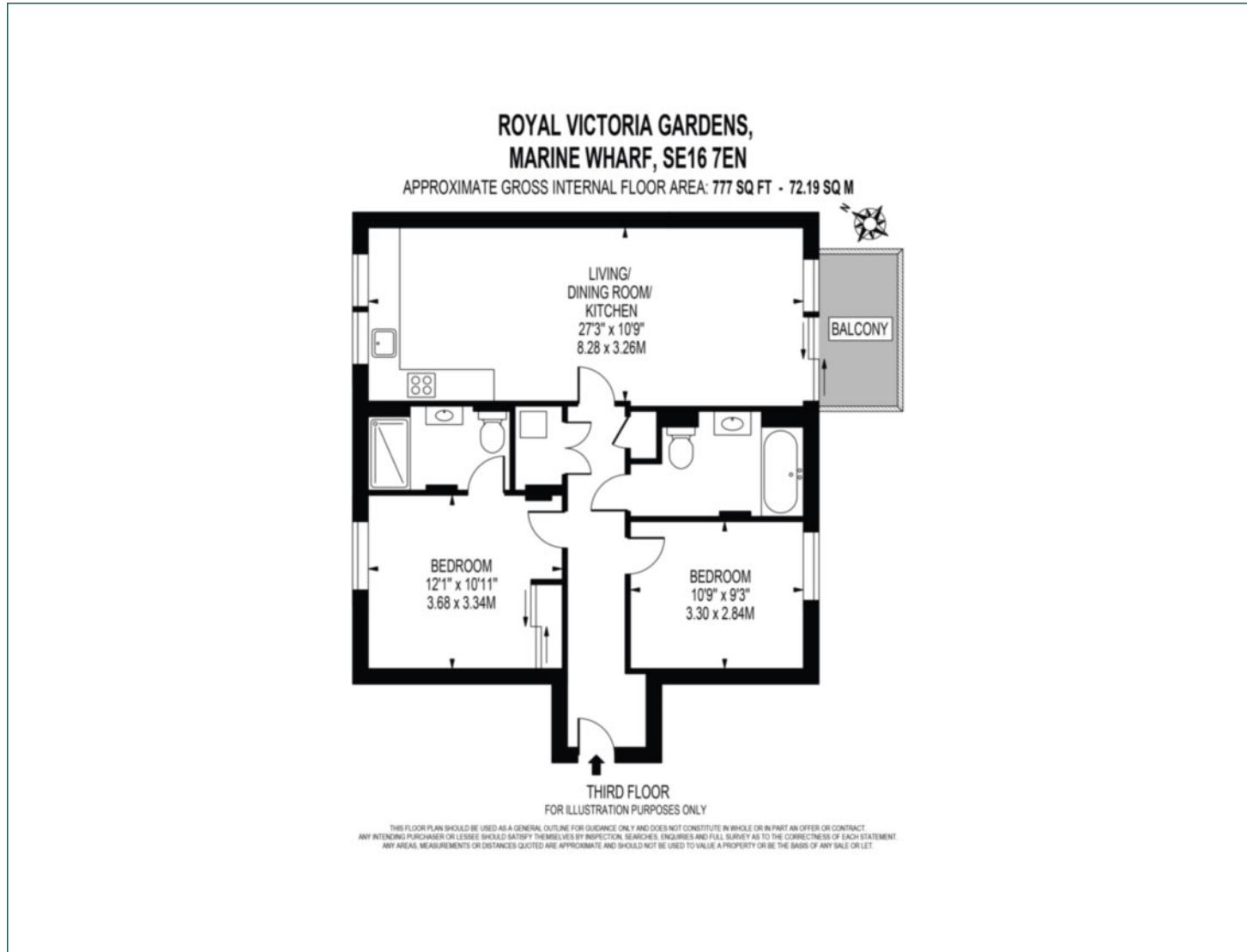
Tenure: Leasehold (987 years remaining) **Local Authority:** Lewisham London

Ground Rent: £350 p.a. **Council Tax Band:** E

Service Charge: £3984.41 p.a. **EPC:** B

Floorplan

777 sq ft | 72.19 sq m



Sales

We're here to help.

IMPORTANT NOTICE - These particulars have been prepared in good faith and they are not intended to constitute part of an offer or contract. We have not performed a structural survey on this property and the services, appliances and specific fittings have not been tested. All photographs, measurements, floor plans and distances referred to are given as a guide and should not be relied upon.

chaseevans.com

 Chase Evans