

Beacon Point, New Capital Quay, 12 Dowells Street, Greenwich, SE10

OIEO **£625,000** | Leasehold



Beacon Point, New Capital Quay, 12 Dowells Street, Greenwich, SE10



2 Bedrooms



2 Bathrooms



1 Reception



On-Site Waitrose



Local Amenities



Parking Available



24-Hour Concierge



0.3 MI Cutty Sark

A stunning and modern two bedroom, two bathroom duplex apartment with direct river views set within a popular development moments from the centre of Greenwich. The property has a large open plan living area, stylish fitted kitchen with integrated appliances, wood flooring, recessed lighting, two double bedrooms (one en-suite) and a spacious family bathroom.

Residents benefit from a 24-hour concierge, as well as an on-site Waitrose, coffee shop and bar. This development is perfect for relaxing walks along the River Thames with picturesque views, Greenwich

Market close by, Greenwich park and the on-site Waitrose and Costa coffee. The development has parking space available and is also near Cutty Sark DLR station.

Tenure: Leasehold (over 950 years)

Local Authority: Greenwich London

Ground Rent: Inc in service charges

Council Tax Band: F

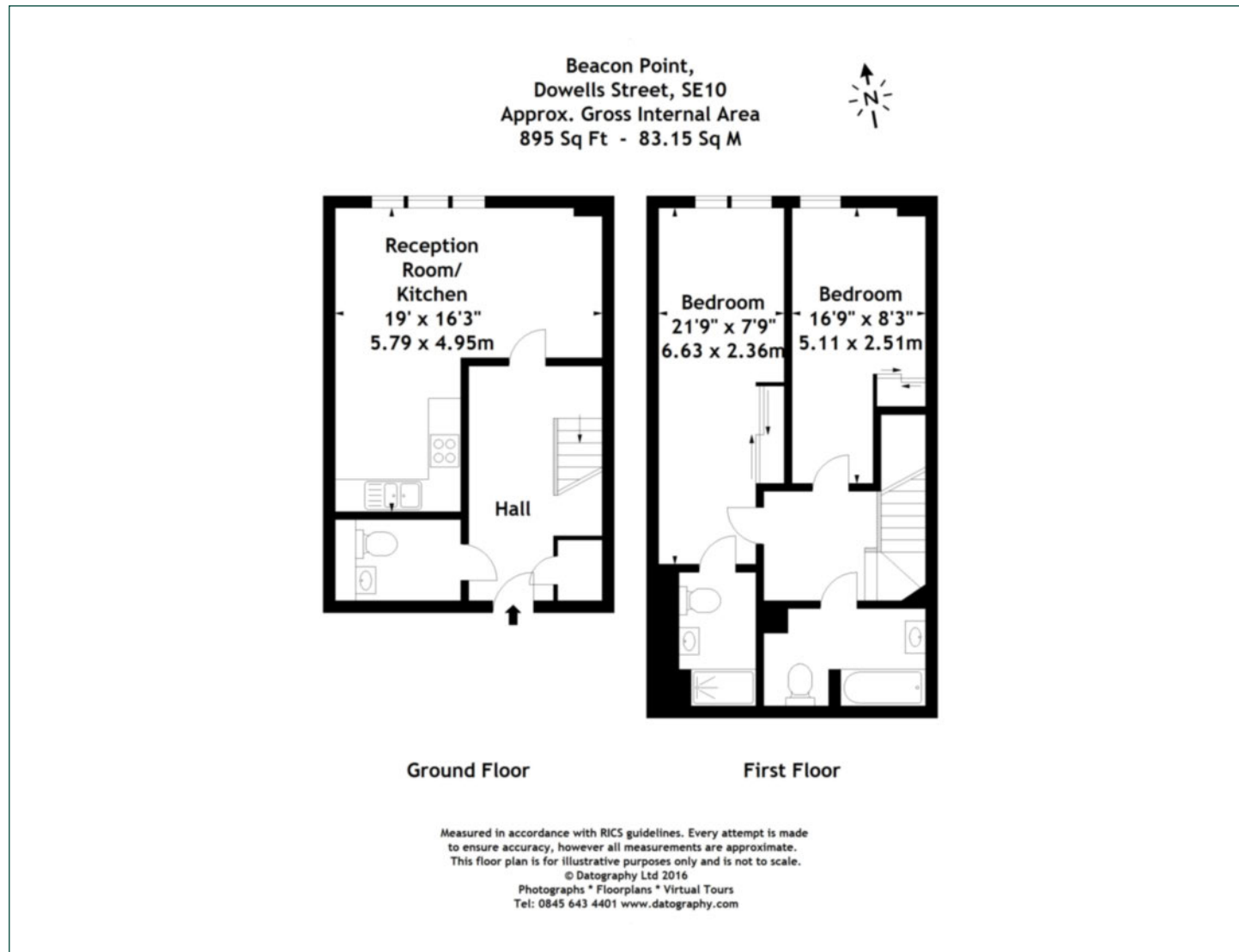
Service Charge: £3,200 p.a.

EPC: C



Floorplan

895 sq ft | 83.15 sq m



Greenwich

1 Crescent Arcade, 279 Creek Road, London, SE10 9EJ

Sales

020 8853 8978 | greenwich.sales@chaseevans.co.uk

We're here to help.

IMPORTANT NOTICE - These particulars have been prepared in good faith and they are not intended to constitute part of an offer or contract. We have not performed a structural survey on this property and the services, appliances and specific fittings have not been tested. All photographs, measurements, floor plans and distances referred to are given as a guide and should not be relied upon.

chaseevans.com

 Chase Evans