



**TO LET**



**HIGH QUALITY OFFICE ACCOMMODATION**

**Orion House,  
Bramah Avenue,  
Scottish Enterprise Technology Park,  
East Kilbride, G75 0RD**

- 3,672 sq. ft. (341.14 sq. m)
- Air-conditioning
- Raised access flooring
- DDA compliant
- 11 car parking spaces (with additional overspill nearby)

Orion House,  
Bramah Avenue,  
Scottish Enterprise Technology Park,  
East Kilbride, G75 0RD

www.rosslynproperty.com  
01355 696021



#### LOCATION

East Kilbride is the sixth largest settlement in Scotland, lying just nine miles to the south east of Glasgow city centre and benefiting from strong road and public transport links.

Orion House is located on Bramah Avenue within Scottish Enterprise Technology Park, which itself sits to the south east of the town centre and East Kilbride Shopping Centre and Bus Station. East Kilbride Railway Station offers a train service to and from Glasgow Central Station at half hourly intervals throughout the day.

The park is accessed from the A725, which leads directly to the Raith Interchange, M74 and M8 motorways with the M77 also easily reached via the A726 and Glasgow Southern Orbital roads.

#### DESCRIPTION

Scottish Enterprise Technology Park was established in 1994 and extends to around 84 acres (34 hectares). It is already home to over 100 companies, ranging from start-ups to SMEs and large international businesses. On-site facilities include security, a café and children's nursery.

Orion House is a modern, two storey office pavilion designed to a high specification. The vacant suite forms a wing of the ground floor and is accessed via a controlled door entry system. The air-conditioned office is largely open plan with raised access flooring and a suspended ceiling with recessed fluorescent light fittings, and the previous tenant has created three private offices/meeting rooms and a staffroom/kitchen. The property is fully DDA compliant and benefits from 11 private car parking spaces with additional overspill parking available nearby. Ladies, gents and assisted toilet facilities are located on the ground floor in the common areas of the property.

#### ACCOMMODATION

We have measured the office suite in accordance with the RICS Code of Measuring Practice and calculate the net internal area to be approximately 3,672 sq. ft. (341.14 sq. m.).

#### AVAILABILITY

The suite is available to lease for a period to be agreed and with an annual rent of £37,000 + VAT, payable quarterly in advance. The service charge is approximately £3,000 + VAT per quarter (£3.27 per sq. ft.) and is charged in arrears based on actual expenditure.

#### ENERGY PERFORMANCE CERTIFICATES

The property has an EPC rating of D and a copy of the certificate and recommendation report are available upon request.

#### LOCAL AUTHORITY RATES

The office suite has a Rateable Value of £40,500 and the relevant Uniform Business Rate for 2018/19 is £0.48. The payment of non-domestic property and water & sewerage rates will become the tenant's responsibility.

#### LEGAL COSTS

Each party will be responsible for their own legal fees with the tenant meeting the costs of registering the lease and, if appropriate, payment of any Land & Buildings Transaction Tax.

#### DATE OF ENTRY

Upon conclusion of the lease agreement.

#### VAT

Rent and other costs related to the property are subject to VAT.

Orion House,  
Bramah Avenue,  
Scottish Enterprise Technology Park,  
East Kilbride, G75 0RD

www.rosslynproperty.com  
01355 696021



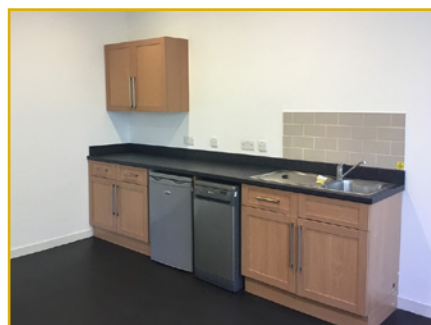
GROUND FLOOR, NORTH WING



11 CAR PARKING SPACES ALLOCATED

Orion House,  
Bramah Avenue,  
Scottish Enterprise Technology Park,  
East Kilbride, G75 0RD

www.rosslynproperty.com  
01355 696021



#### VIEWING

For viewings or further information, please contact:



**Stephen St. Clair MRICS**  
Rosslyn Property Ltd.  
Suite 14, Jacobean House,  
1A Glebe Street,  
East Kilbride, G74 4LY

stephen.stclair@rosslynproperty.com  
Tel: 07795 426771



**Nicholas Hurn**  
JLL.  
150 St Vincent Street  
Glasgow, G2 5ND

nicholas.hurn@eu.jll.com  
Tel: 0141 567 6627

#### IMPORTANT NOTICE

**1. Particulars:** These particulars are not an offer or contract, nor part of one. You should not rely on statements by Rosslyn Property Ltd. in the particulars or by word of mouth or in writing ("information") as being factually accurate about the property, its condition or its value. Neither Rosslyn Property Ltd. nor any joint agent has any authority to make any representations about the property, and accordingly any information given is entirely without responsibility on the part of the agents, seller(s) or lessor(s).

**2. Photos etc:** The photographs show only certain parts of the property as they appeared at the time they were taken. Areas, measurements and distances given are approximate only.

**3. Regulations etc:** Any reference to alterations to, or use of, any part of the property does not mean that any necessary planning, building regulations or other consent has been obtained. A buyer or lessee must find out by inspection or in other ways that these matters have been properly dealt with and that all information is correct.

**4. VAT:** The VAT position relating to the property may change without notice.

**Publication Date:** APRIL 2019