



11 Sutcliffe Wood Lane

Hipperholme, Halifax, HX3 8PR

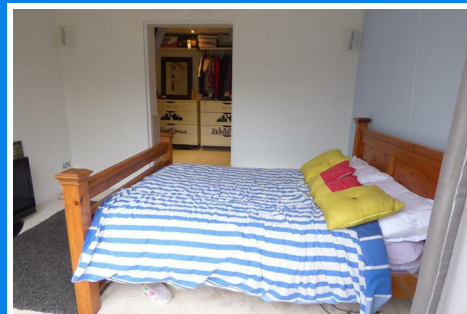
£750 PCM



11 Sutcliffe Wood Lane

Hipperholme, Halifax, HX3 8PR

£750 PCM



SW Property are pleased to offer for let this stunning 1 bedroom deluxe apartment ideal for the professional person or professional couple offering modern contemporary living set within this quiet semi rural area with amazing views. Unfurnished. Accommodation comprises of open plan dining kitchen, leading to living room with feature gas stove with French doors out to balcony with open views , shower room and useful laundry cupboard. Lower ground floor dressing room and master bedroom again having balcony which is accessed through the bedrooms bi folding doors again having amazing views. Also from the living area is an external door which leads down to the low maintenance garden. Internal viewing a must to appreciate the beautiful apartment. Available immediately.

EPC rating C

Council tax band A

[Lounge/kitchen](#)

[Shower Room](#)

[Dressing room](#)

[Bedroom 1](#)

[Exterior](#)



Road Map



Hybrid Map



Terrain Map



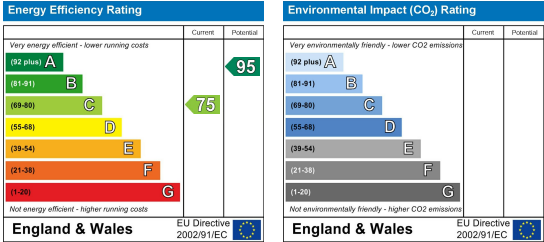
Floor Plan



Viewing

Please contact us on 01422 415776 if you wish to arrange a viewing appointment for this property or require further information.

Energy Efficiency Graph



These particulars are for guidance only and do not constitute any part of a contract. No person within the company has the authority to make or give any representation or warranty in respect of the property. All measurements are approximate and for illustrative purposes only. None of the services and fittings or equipment have been tested. These particulars whilst believed to be accurate should not be relied on as statements of fact, and purchasers must satisfy themselves by inspection or otherwise as to their accuracy. Although these particulars are thought to be materially correct their accuracy cannot be guaranteed and they do not form part of any contract.