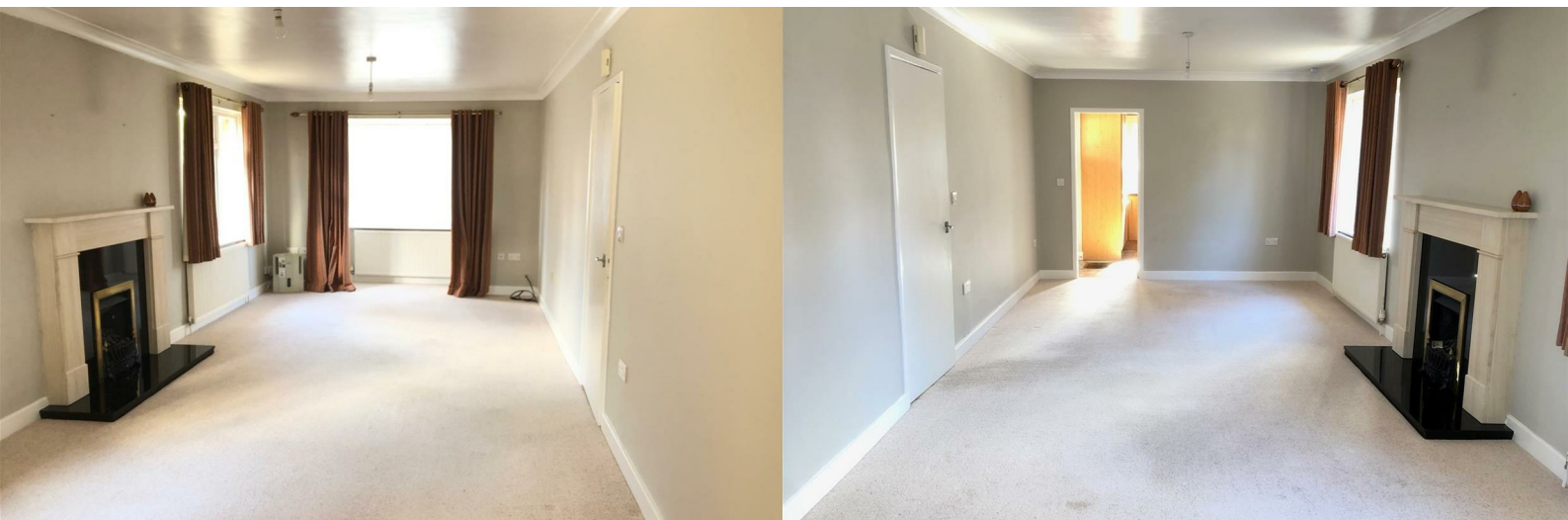




## 1a Foster Avenue

, Huddersfield, HD4 5LN

£950 PCM



# 1a Foster Avenue

, Huddersfield, HD4 5LN

**£950 PCM**



SW Property are pleased to present this lovely 2 bedroom semi detached bungalow, situated very close to Beaumont Park, on a quiet residential street. The property benefits from a front and back garden, as well as a long drive and a detached garage. The property comprises of a kitchen, a living and dining room, a double bedroom, a large single bedroom and family bathroom with a separate shower.

AVAILABLE NOW.

Council tax band C.

EPC D.





Road Map



Hybrid Map



Terrain Map



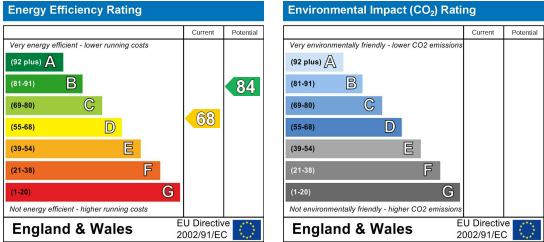
Floor Plan



Viewing

Please contact us on 01422 415776 if you wish to arrange a viewing appointment for this property or require further information.

Energy Efficiency Graph



These particulars are for guidance only and do not constitute any part of a contract. No person within the company has the authority to make or give any representation or warranty in respect of the property. All measurements are approximate and for illustrative purposes only. None of the services and fittings or equipment have been tested. These particulars whilst believed to be accurate should not be relied on as statements of fact, and purchasers must satisfy themselves by inspection or otherwise as to their accuracy. Although these particulars are thought to be materially correct their accuracy cannot be guaranteed and they do not form part of any contract.