



## 5a Clifton Street

, Sowerby Bridge, HX6 2DA

£550 PCM

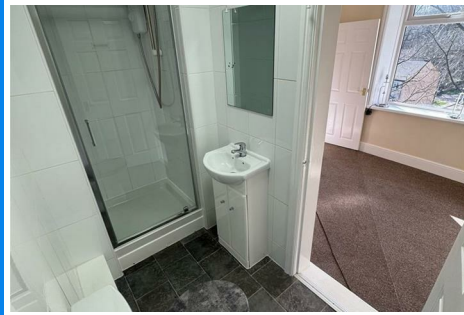




# 5a Clifton Street

, Sowerby Bridge, HX6 2DA

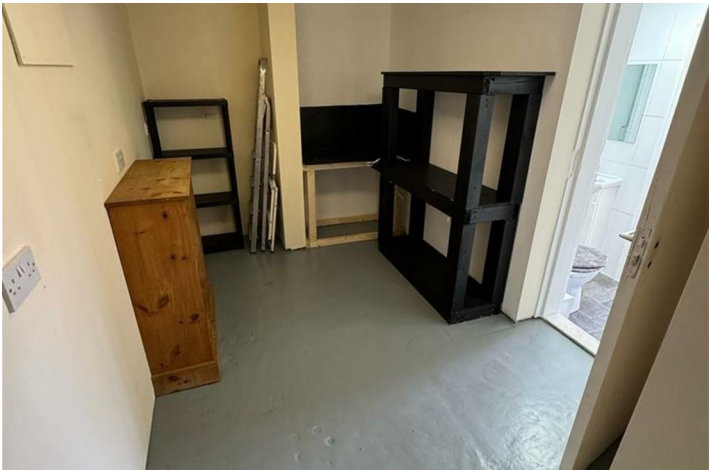
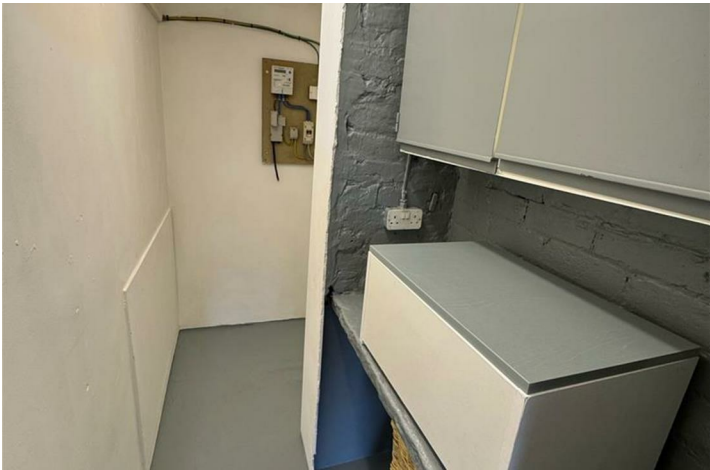
## £550 PCM



SW Property are pleased to present this quirky 1 bed apartment located in the sought after area of Sowerby Bridge.

The apartment has been recently refurbished throughout and has been enhanced by upvc double glazing and electric heating. Briefly comprising: lounge, small kitchen, bedroom, bathroom, store room, and a additional large back room.

Council tax band A  
EPC rating E



Road Map



Hybrid Map



Terrain Map



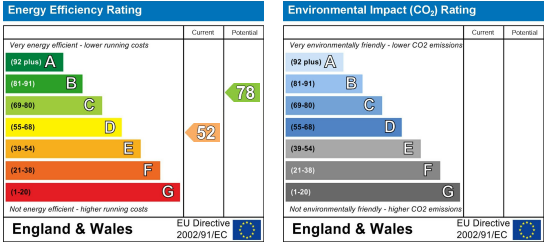
Floor Plan



Viewing

Please contact us on 01422 415776 if you wish to arrange a viewing appointment for this property or require further information.

Energy Efficiency Graph



These particulars are for guidance only and do not constitute any part of a contract. No person within the company has the authority to make or give any representation or warranty in respect of the property. All measurements are approximate and for illustrative purposes only. None of the services and fittings or equipment have been tested. These particulars whilst believed to be accurate should not be relied on as statements of fact, and purchasers must satisfy themselves by inspection or otherwise as to their accuracy. Although these particulars are thought to be materially correct their accuracy cannot be guaranteed and they do not form part of any contract.