



Grampian Way, Thorne,
Doncaster



Offers in excess of £175,000

- Detached Bungalow
- Two Double Bedrooms
- Large Plot
- Garage & Off-Street Parking
- Sought After Location
- Close To Local Amenities
- Freehold
- EPC rating C



Northwood Thorne are extremely proud to bring the the market this beautifully presented, 2-bedroom, detached bungalow. Situated in a very popular and desirable location, boasting good sized living room, fitted kitchen, three piece bathroom suite, two double bedrooms.

Externally the property benefits from off street parking for multiple cars to the front and side, grassed area and mature shrubs, to the rear there is a large fully enclosed garden, grassed and patio area, garage and stunning open views over a natural body of water which attracts wildlife such as ducks & heron where you can peacefully enjoy the nature on your doorstep.



Entrance Hall

Living Room - 5.40m x 3.00m

Kitchen - 2.24m x 3.60m

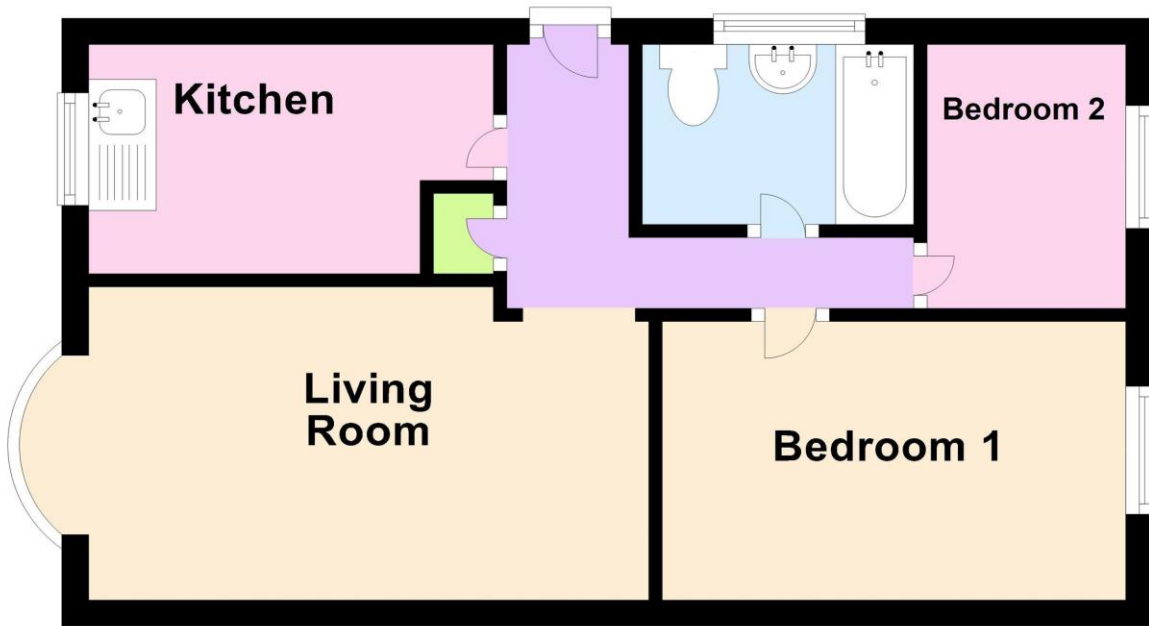
Bathroom

Bedroom One - 4.22m x 2.60m

Bedroom Two - 3.60m x 2.22m

Disclaimer - Grampian Way These details are intended to give a fair description only and their accuracy cannot be guaranteed nor are any floor plans (if included) exactly to scale. These details do not constitute part of any offer or contract and are not to be relied upon as statements of representation or fact. Intended purchasers are advised to recheck all measurements before committing to any expense and to verify the legal title of the property from their legal representative. Any contents shown in the images contained within these particulars will not be included in the sale unless otherwise stated or following individual negotiations with the vendor. Northwood have not tested any apparatus, equipment, fixtures or services so cannot confirm that they are in working order and the property is sold on this basis.

Ground Floor





Northwood Thorne

01405 814999

thorne@northwooduk.com