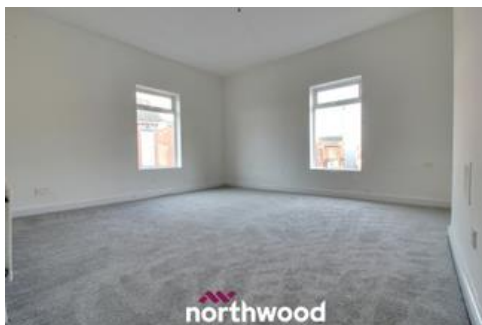




Upper Kenyon Street, Thorne Offers in excess of £70,000



Leasehold | EPC Rating: E

- Great Investment Opportunity
- Three Bedrooms
- Kitchen/Diner

- Large Maisonette
- Spacious Lounge
- Close To Local Amenities



Email
thorne@northwooduk.com

Phone
01405 814999

Description

Northwood Thorne are pleased to bring to the market this large split level maisonette property. This great investment property comprises of a spacious lounge, kitchen/diner, family bathroom and single bedroom. To the top floor there is two double bedrooms.

This property benefits from being in close proximity to an array of local amenities, excellent transport links including local train station and just a short drive to the M18.

Call now to arrange a viewing!

Disclaimer - Upper Kenyon Street These details are intended to give a fair description only and their accuracy cannot be guaranteed nor are any floor plans (if included) exactly to scale. These details do not constitute part of any offer or contract and are not to be relied upon as statements of representation or fact. Intended purchasers are advised to recheck all measurements before committing to any expense and to verify the legal title of the property from their legal representative. Any contents shown in the images contained within these particulars will not be included in the sale unless otherwise stated or following individual negotiations with the vendor. Northwood have not tested any apparatus, equipment, fixtures or services so cannot confirm that they are in working order and the property is sold on this basis.

Photographs



Rooms

Entrance

Front facing door.

Stairs & Landing

Front facing window, carpet.

Living Room

Front facing window, side facing window, carpet, radiator.

3.12m(max) x 4.65m(max)

Kitchen

Front facing window, wall and base units, sink with mixer, tiled splashbacks, gas hob & oven, extractor fan, wall mounted boiler, tiled flooring.

3.34m(max) x 3.96m(max)

Bathroom

Toilet, sink, bath with shower over, extractor fan, tiled splashback, vinyl flooring.

1.88m x 2.11m (6'2" x 6'11")

Bedroom Three

Front facing window, carpet, radiator.

2.07m x 3.07m (6'10" x 10'1")

2nd Stairs & Landing

Carpet.

Bedroom One

Front facing window, storage cupboard, carpet, radiator.

3.39m(max) x 4.80m(max)

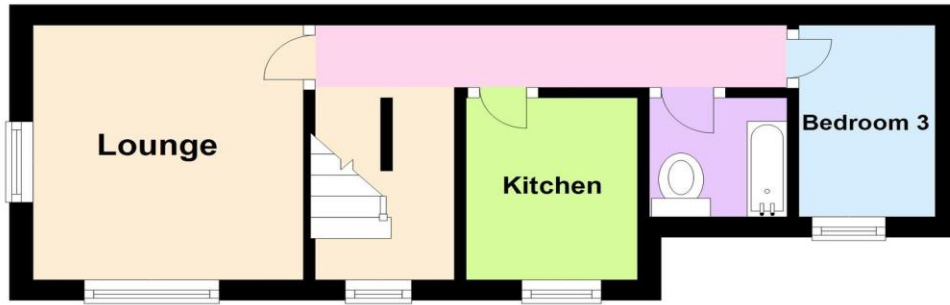
Bedroom Two

Front facing window, carpet, radiator.

3.34m(max) x 4.72m(max)

Floorplan

Ground Floor



First Floor



Map

