



Wharf Crescent, Thorne, Doncaster Offers in excess of £205,000



 3  2  1

Freehold | EPC Rating: B

- Beautifully Presented Throughout
- Four Bedrooms
- Parking For Two Vehicles
- Downstairs W/C
- Sought After Location
- Close To Local Amenities



Email
thorne@northwooduk.com

Phone
01405 814999

Description

Northwood Thorne are proud to present to the market this stunning end of terrace four bedroom property on a popular, sought after development. This beautiful, ready to be moved into property has everything to offer. The downstairs of this home boasts a W/C, beautiful modern white gloss kitchen diner and a living room with two double doors overlooking the rear garden. The first floor consists of two double bedrooms, a single bedroom and a family bathroom with stairs leading up to the master bedroom on the top floor. Outside, there is a fully enclosed rear garden with separate grassed and patio areas, perfect for entertaining. Parking for two vehicles completes. Viewing is advised to appreciate this property, so call us now at our Thorne Office to arrange a viewing!

Disclaimer Wharf Crescent - These details are intended to give a fair description only and their accuracy cannot be guaranteed nor are any floor plans (if included) exactly to scale. These details do not constitute part of any offer or contract and are not to be relied upon as statements of representation or fact. Intended purchasers are advised to recheck all measurements before committing to any expense and to verify the legal title of the property from their legal representative. Any contents shown in the images contained within these particulars will not be included in the sale unless otherwise stated or following individual negotiations with the vendor. Northwood have not tested any apparatus, equipment, fixtures or services so cannot confirm that they are in working order and the property is sold on this basis.

Photographs



Rooms

Entrance Hall

Front facing door, under stair storage cupboard, alarm, laminate flooring, radiator with cover.
0.00m x 0.00m (0'0" x 0'0")

W.C

Toilet, sink, tiled splashback, tiled flooring, radiator.
0.00m x 0.00m (0'0" x 0'0")

Kitchen

Front facing window, wall and base units, sink with mixer, tiled splashbacks, electric oven and hob, extractor fan, integrated fridge/freezer, dishwasher, tiled flooring, inset lights, double doors leading to living room.
2.64m x 4.08m (8'8" x 13'5")

Living Room

Back facing double doors x2, phone point, TV point, laminate flooring, inset lights, radiator.
3.47m x 3.71m (11'5" x 12'2")

Stairs & Landing

Side facing window, carpet.
0.00m x 0.00m (0'0" x 0'0")

Bedroom Two

Front facing window, TV point, carpet, radiator.
2.67m(max) x 4.22m(max)

Bedroom Three

Back facing window, TV point, carpet, radiator.
2.67m(max) x 3.93(max)

Bedroom Four

Back facing window, TV point, laminate flooring, radiator.
2.08m x 2.63m (6'10" x 8'7")

Family Bathroom

Back facing window, p shaped bath with shower over, toilet, sink with mixer, towel radiator, half tiled walls, tiled flooring.
1.97m x 2.04m (6'6" x 6'8")

second stairs

Side facing window, carpet.
0.00m x 0.00m (0'0" x 0'0")

Bedroom One

Back facing velux window, TV point, loft hatch, storage cupboard, carpet, radiator.
3.70m(max) x 4.21m(max)

Front

Parking for two vehicles.
0.00m x 0.00m (0'0" x 0'0")

Rear

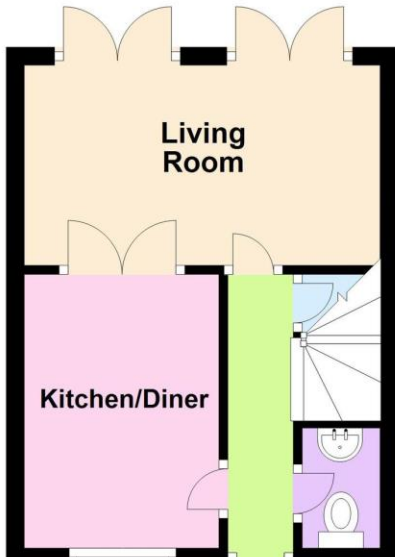
Patio areas, grassed area, fully enclosed.
0.00m x 0.00m (0'0" x 0'0")

More photographs



Floorplan

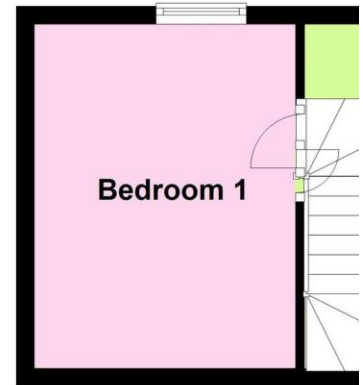
Ground Floor



First Floor



Second Floor



Map

