



Ashburton Place, W1J

£6,500 Per week

An immaculate and beautifully designed two bedroom apartment of 1,587 sq ft in London's newest luxury development.

Conveniently located close to the elegant boutiques and lavish salons of Mayfair. This exclusive development is in prime position to enjoy shopping in the capital, as well as the natural surroundings of nearby Parks.

Features

- Two Double Bedrooms
- Two En Suites
- Lift & Porter
- Swimming Pool & Cinema
- Private Parking
- Excellent Location

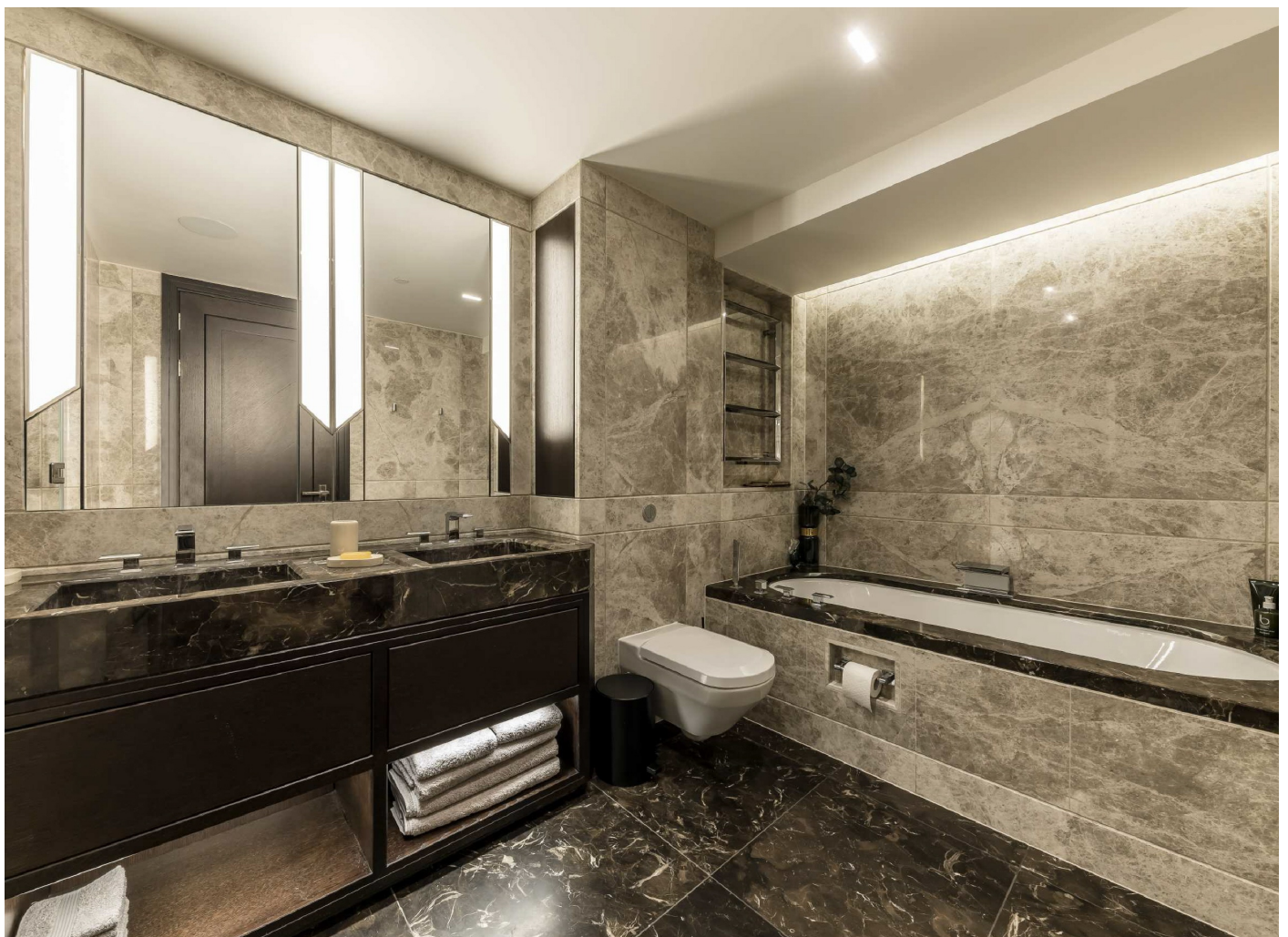


Ashburton Place, W1J

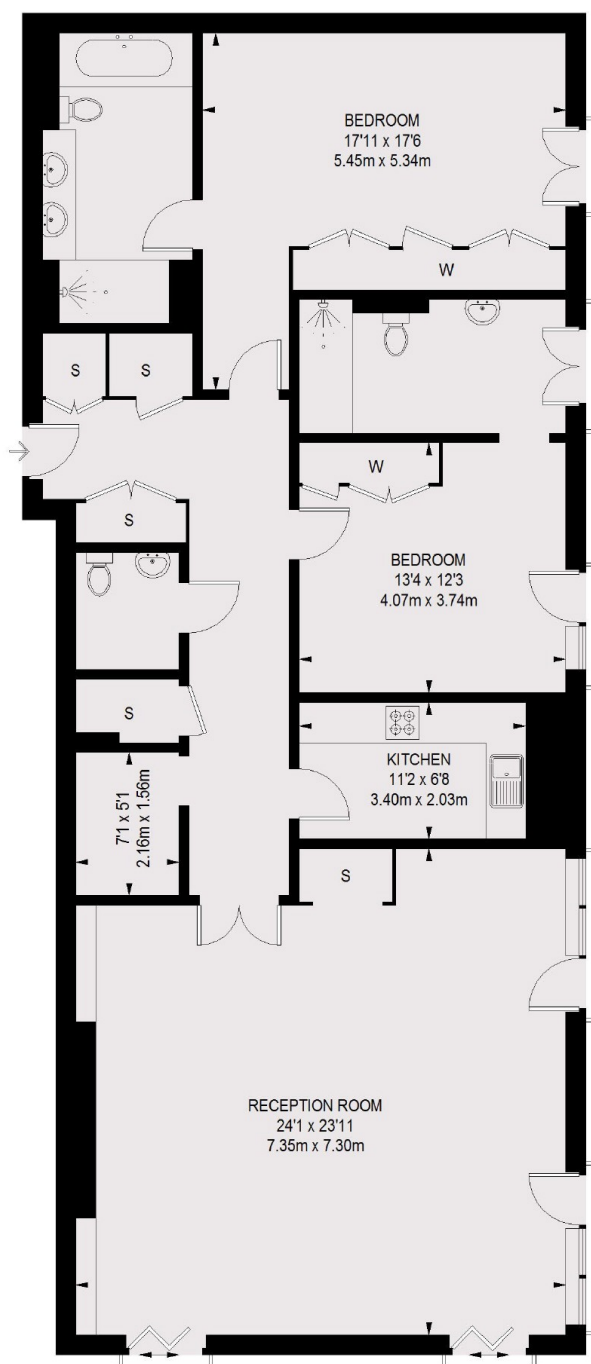
This third floor apartment is the perfect space for entertaining guests, with a superbly designed reception room and dining area, as well as a separate, fully fitted kitchen.

The property has two generous double bedrooms, each with stunning en suite bathrooms. With bespoke marble throughout, and lift access the apartment brings a new level of luxury to the Mayfair lettings market.

With only 34 apartments this super exclusive property benefits from round the clock concierge, private parking, comprehensive wellness centre, swimming pool, conference facilities, private cinema and a resident's lounge.



Ashburton Place, London, W1J



TOTAL APPROX. FLOOR AREA
1587 SQ. FT. (147.42 SQ. M.)

Dexters

Mayfair
102 Mount Street
London
W1K 2TH
Lettings
020 7529 5588

Energy Rating: B. We aim to make our particulars both accurate and reliable. However they are not guaranteed; nor do they form part of an offer or contract. If you require clarification on any points then please contact us, especially if you're traveling some distance to view. Please note that appliances and heating systems have not been tested and therefore no warranties can be given as to their good working order.

 **RICS** | Regulated
Estate Agent
and Letting Agent

[dexters.co.uk](https://www.dexters.co.uk)